



Featuring VirtualSource vs Reflectors

# 6" Horizontal VirtualBaffle™ Two Lamp Downlights CFCB626QHEB

Two 26W Quad Tube 4-Pin Lamps  
120V to 277V and 347V  
Non-IC Rated

DATE: \_\_\_\_\_ TYPE: \_\_\_\_\_

FIRM NAME: \_\_\_\_\_

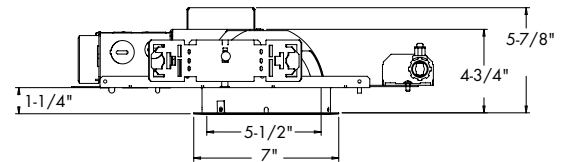
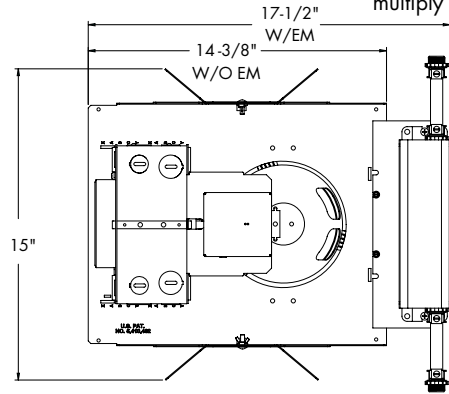
PROJECT: \_\_\_\_\_



Ceiling Cutout: 6 1/4"  
Maximum Ceiling Thickness: 1 1/4"

For conversion to millimeters,  
multiply inches by 25.4

Not To Scale



Virtual Baffle



CB Model

### APPLICATIONS:

Virtual Baffle luminaires feature downlight and wall wash distributions with excellent brightness and glare control in a shallow plenum housing. Suitable for use in a wide variety of commercial applications including offices, lobbies, and retail projects where shallow plenum luminaires are required. The CFCB6 series is compatible with the Signosó family of architectural elements.

### HOUSING:

One-piece galvanized 18-gauge cold rolled steel platform. Prewired J-box with snap-on cover for easy access.

### REFLECTOR:

360° rotatable Virtual Source® Cross Baffle with upper reflector that allows perfect jobsite alignment.

Available in specular clear, champagne gold, or white. Self-trim is standard. A painted white self-trim option is also available.

### BALLAST:

One (1) compact fluorescent Class 'P' electronic multi-volt (120V through 277V) ballast suitable for operating 26W quad tube lamps. HPF and EOL protection standard. Accessible from below ceiling.

### LAMP/SOCKET:

Two injection molded sockets. Suitable for two 26W (G24q-3 base) quad tube compact fluorescent lamps. Lamps furnished by others or as option below.

### INSTALLATION:

Universal adjustable mounting brackets accommodate 1 1/2" or 3/4" lathing channel (by others) or Prescolite 24" bar hangers (B24 or B6).

### LABELS:

UL listed or UL/CSA listed with CDN option for damp locations. Approved for through wiring. Non-type IC and NYC approved

### LAMP INCLUDED OPTION:

Specify lamp type Q4 (Quad 4-pin) and temperature as shown below.

CATALOG NUMBER:

EXAMPLE: CFCB626QHEBFSDFA STCB6ACL LP26Q430K B24

HOUSINGS	HOUSING OPTIONS	HOUSING OPTIONS	REFLECTORS	REFLECTOR FINISH	ACCESSORIES
<input type="checkbox"/> <b>CFCB626QHEB</b> 6", (2) 26W Quad tube, multi-volt electronic ballast	<input type="checkbox"/> <b>CDN</b> Canadian electrical code compliant ballast disconnect <input type="checkbox"/> <b>CDN 347V<sup>5</sup></b> Canadian electrical code compliant ballast disconnect <input type="checkbox"/> <b>DM</b> Electronic Analog Dimming Ballast to 3%, 4-wire, 0-10V (120-277V) <input type="checkbox"/> <b>EM<sup>3,6</sup></b> Emergency battery pack with integral test switch and indicator light. <input type="checkbox"/> <b>7DM</b> Advance Mark 7 Dimming Ballast to 5%, 4-wire, 0-10V, analog (120V-277V) (specify voltage/wattage) <input type="checkbox"/> <b>XDM</b> Advance Mark 10 Dimming Ballast to 5%, 2-wire, line voltage (specify supply voltage) <input type="checkbox"/> <b>ECDM</b> Lutron EcoSystem or 3-wire line voltage dimming ballast (120-277V). Dims to 5%.	<input type="checkbox"/> <b>2DM</b> Lutron Tu-Wire Dimming Ballast to 5%, 2-wire, line voltage (120 volt only) (specify wattage) <input type="checkbox"/> <b>EMR<sup>2,6</sup></b> Emergency battery pack with remote test switch and indicator light. (Refer to specification sheet ARCH-CFL-067 for lumen ratings in DC mode) Required for lensed reflectors. <input type="checkbox"/> <b>FSDFA</b> Fuse kit installed at factory <input type="checkbox"/> <b>RIF1<sup>6</sup></b> Radio interference filter (single circuit) <input type="checkbox"/> <b>SYL<sup>4</sup></b> Osram Sylvania Ballast (available only for standard EB option) <input type="checkbox"/> <b>SMT<sup>6</sup></b> Philips Advance SmartMate® ballast	<input type="checkbox"/> <b>STCB6ACL</b> vs 6" clear Alzak Cross Baffle reflector <input type="checkbox"/> <b>STCB6ACG</b> vs 6" champagne gold Alzak Cross Baffle reflector	<input type="checkbox"/> <b>Blank</b> Specular <input type="checkbox"/> <b>SS<sup>1</sup></b> Semi-specular <hr/> <b>REFLECTOR OPTIONS</b> <input type="checkbox"/> <b>WW</b> Wall wash reflector <input type="checkbox"/> <b>L</b> Clear glass lens <input type="checkbox"/> <b>SL</b> Glass prismatic spread lens <input type="checkbox"/> <b>WT</b> Painted white self-flange	<input type="checkbox"/> <b>B24</b> Set of two (2) 24" bar hangers for T-bar ceilings <input type="checkbox"/> <b>B6</b> Set of two (2) bar hangers for ceiling joists up to 24" centers <input type="checkbox"/> <b>FSDFI</b> Fuse kit for field installation <hr/> <b>LAMP ACCESSORIES</b> <input type="checkbox"/> <b>LP</b> _____ -wattage= 26 -type= Q4 (Quad 4-pin) -temp=27K, 30K, 35K, 41K (Kelvin) *Example: LP26Q441K Requires two lamps.

<sup>1</sup>Not available for Champagne Gold.

<sup>2</sup>Remote mount test switch and indicator light for use with lensed, wall wash, and cross baffles.

<sup>3</sup>Not valid with lensed trim.

<sup>4</sup>Available for Osram Sylvania Quick 60+® Limited Warranty when used with Osram lamp(s). See [www.prescolite.com](http://www.prescolite.com) for details.

<sup>5</sup>Dimming option not available in 347V

<sup>6</sup>Not available with 347V



# PHOTOMETRIC DATA

## Architektür - 6" Horizontal VirtualBaffle™ and TurboBaffle™ Two Lamp Downlights - CFCB6QHEB Series

### BALLAST DATA

	120V	26W 277V	347V
Total Input Watts	57W	57W	58W
Input Current (Amps)	0.48	0.21	0.17
Input Frequency in Hz	50/60	50/60	50/60
Power Factor	>97%	>97%	>97%
Ballast Factor	>98%	>98%	1
Total Harmonic Distortion	<10%	<10%	<10%
Minimum Starting Temp	-18°C (0° F)	-18°C (0° F)	-18°C (0° F)

### LAMP DATA

Rated Watts	26W Quad
Rated Lumens	1800
Efficacy (LPW)	69
Rated Life	10,000 hrs.
CRI	82
Min. Starting Temp.	0°F

### CFCB626QHEB-STCB6ACL Virtual Baffle

Test No. PL5783

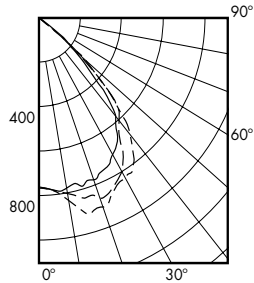
### LUMINANCE DATA IN CANDELA/SQ. METER

Angle in Vertical	Average 0°	Average 45°	Average 90°
45°	30817	39421	40012
55°	2837	5550	4683
65°	0	0	0
75°	0	0	0
85°	0	0	0

### CFCB626QHEB-STCB6ACL Virtual Baffle

Lamp: Two 26W Quads  
Spacing Criteria: 0°=1.5  
90°=1.3  
Efficiency = 42.0 %

### CANDLEPOWER DISTRIBUTION



Test No. PL5783

BEAM —  
45-135 - - -  
90 . . .

### CANDLEPOWER SUMMARY

Angle	0°	45°	90°
0	776	776	776
5	789	789	798
10	789	811	842
15	798	855	931
25	763	860	864
35	665	687	798
45	364	465	474
55	27	53	45
65	0	0	0
75	0	0	0
85	0	0	0

### CFCB626QHEB-STCB6ACL Virtual Baffle

Test No. PL5783

### AVERAGE INITIAL FOOTCANDLES

Multiple Units (Square Array)  
Ceiling 80% Wall 50% Floor 20%

26W Quads

SPACING	RCR1	RCR3	RCR7
8.0	25	22	14
9.0	20	17	12
10.0	15	13	10
11.0	13	11	7

### CFCB626QHEB-STCB6ACL Virtual Baffle

Test No. PL5783

### COEFFICIENTS OF UTILIZATION

Zonal Cavity Method

Room Cavity Ratio	% Effective Floor Cavity Reflectance																			
	80%				70%				50%				30%				10%			
	20% Effective Floor Cavity Reflectance																			
	% Wall Reflectance																			
	70	50	30	10	70	50	30	10	50	30	10	50	30	10	50	30	10			
1	.48	.46	.45	.44	.47	.45	.44	.43	.44	.43	.42	.42	.41	.41	.41	.40	.40			
2	.45	.43	.41	.40	.44	.42	.41	.39	.41	.40	.38	.40	.39	.38	.39	.38	.37			
3	.42	.40	.38	.36	.42	.39	.37	.36	.38	.36	.35	.37	.36	.34	.36	.35	.34			
4	.40	.37	.34	.33	.39	.36	.34	.32	.35	.33	.32	.35	.33	.32	.34	.32	.31			
5	.38	.34	.31	.29	.37	.34	.31	.29	.33	.31	.29	.32	.30	.29	.31	.30	.29			
6	.36	.31	.29	.27	.35	.31	.28	.27	.30	.28	.26	.30	.28	.26	.29	.27	.26			
7	.33	.29	.26	.24	.33	.29	.26	.24	.28	.26	.24	.27	.25	.24	.27	.25	.24			
8	.31	.26	.24	.22	.30	.26	.23	.22	.26	.23	.22	.25	.23	.21	.25	.23	.21			
9	.29	.24	.21	.19	.28	.24	.21	.19	.24	.21	.19	.23	.21	.19	.23	.21	.19			
10	.27	.22	.19	.17	.26	.22	.19	.17	.22	.19	.17	.21	.19	.17	.21	.19	.17			

**Note:** Use of horizontally-lamped open downlights with amalgam-based CFL lamps in air-handling plenums is not recommended because cool air flow over the lamps will result in reduced light output. Prescolite recommends vertical lamp downlights or use of the regressed lensed trim option for horizontal downlights in these applications to reduce this effect. Refer to Prescolite White Paper WP0003 at [www.prescolite.com](http://www.prescolite.com) for more information.

### NOTES

⊙ vs Denotes a Virtual Source reflector.

Refer to [www.prescolite.com](http://www.prescolite.com) for additional photometric tests (IES Files).



Web: [www.prescolite.com](http://www.prescolite.com) • Tech Support: (888) 777-4832  
701 Millennium Blvd., Greenville, SC 29607 U.S.A. • Phone (864) 678-1000  
Copyright ©2015 Prescolite, Inc., a division of Hubbell Lighting, Inc. All Rights Reserved  
Specifications subject to change without notice. • Printed in U.S.A. • ARCH-CFL-006 • 4/16/15



**HUBBELL**  
Lighting, Inc.