

DATE:	LOCATION:
TYPE:	PROJECT:
CATALOG #:	

LM Series

HIGH CAPACITY EMERGENCY LIGHT

FEATURES

- All LM models use either 3W or 5W LED lamp heads
- White, corrosion-resistant metal housing and front-loading cover
- Maintenance-free lead-calcium batteries
- Capacities up to 130 watts
- Lamp heads may be top or side mounted
- Low-voltage battery disconnect



RELATED PRODUCTS

Spectron® Self-test/Self-Diagnostic specification sheet



SPECIFICATIONS

APPLICATION

- The LM provides emergency lighting for industrial and commercial applications
- The LM offers high capacity for higher lamp wattages and remote capability
- Offered with 6 and 12 VDC operation, 10.8 - 130 watts of capacity, and multiple lamp wattages
- The steel housing provides strength and durability.

CONSTRUCTION

- LM has two housing sizes
- Size 1 housing used with 10 - 40 watts units and made of 20-gauge corrosion-resistant steel
- Size 2 housing used with 66 - 130 watts units and made of 18-gauge corrosion-resistant steel

- Standard lamp heads are injection molded
- Aluminum lamp heads offered as optional
- Housing and lamp heads in white color

INSTALLATION

- Mount through universal knock-out pattern to standard electrical boxes up to 4" square
- Also mounts to wall surface through keyhole mounting slots
- Wiring terminals and fused distribution board located inside of housing for remote head wiring
- Pre-stripped transformer leads provided

ILLUMINATION

- All LM-03L models use 3W high performance LED lamps
- All LM-1205L models use 5W high performance LED lamps

COMPLIANCES

- UL listed to UL924 Standard

WARRANTY

- **Fixture:** 3 Years Full, 5 Years Full with Spectron
- **Battery:**
 - Lead-Acid Models - 2 Years Full, 3 Years Pro Rata
 - See [HLI Standard Warranty](#) for additional information

KEY DATA	
Lumens per head	248
Wattage	4
Efficacy Range (LPW)	135.5
Rated LED Lifecycle (Hours)	< 100,000

ORDERING GUIDE

Example: LM40-12V-1205L

CATALOG #

LM		Capacity		Battery Type		Output Voltage		Ratings		Self Diagnostics		Lamps			
LM	High Capacity Emergency Light	2	10.8 Watts	Blank	Lead Calcium	Blank	6 Volt ¹	Blank	None	Blank	None	03L	3W LED lamp heads ¹		
		16	16 Watts			-12V	12 Volt ²					I	Spectron® Self-test/ Self-diagnostic Electronics 3	1205L	5W LED lamp heads ²
		33	33 Watt												
		40	40 Watt												
		66	66 Watt												
		80	80 Watt												
		130	130Watt												

Accessories (Order Separately)

- 40G Wire Guard
- OCR-03L Outdoor LED Remote Heads
- CPR-03L Indoor LED remote lamps

Notes:

- 1 Only available for LM2, LM16, LM33
- 2 Only available for LM40, LM66, LM80, LM130
- 3 Only available for LM16 and LM33

DATE: _____ LOCATION: _____

TYPE: _____ PROJECT: _____

CATALOG #: _____

LM Series

HIGH CAPACITY EMERGENCY LIGHT

ADDITIONAL PRODUCT INFORMATION

03L LED LAMP

LM fixtures with 03L lamps use 3 watts per lamp and have a life-cycle of 50,000 hours. The 03L lamp offers multiple unit spacing up to 42' on center. Each lamp delivers 155 lumens. *Note: LM33I-03L must be loaded to a minimum of 12 watts total. The integral lamps use 6W so there must be a minimum of 6W remote load added to obtain lamp sensitivity adjustment.

1205L LED LAMP

LM fixtures with 1205L lamps use 5 watts per lamp and have a life-cycle of 50,000 hours. The 1205L lamp offers multiple unit spacing up to 82' on center. Each lamp delivers 547 lumens.

ELECTRONICS

Dual voltage input of 120/277VAC, 60 Hz. Includes a fully automatic constant voltage, current limited charger with transformer isolation and low battery voltage disconnect. Transfer contact through electric relay. Power distribution made with fused leads through internally located distribution board. Maximum power consumption of 20 watts (all models). Test initiated

by means of integral test switch. AC-on indicated by LED. AC lock out provision prevents discharge of battery at installation until power is present.

OPTIONAL SPECTRON® SELF-TEST/SELF DIAGNOSTICS

Provides automatic flashing fault detection for battery, charger, transfer circuit and lamps. Conducts automatic 1-minute self-test every 28 days and a 30-minute self-test every 6 months. Automatic transfer for brownout conditions and 15-minute retransfer delay. Test switch allows for initiation of a 1, 5, 30 or 60-minute system check. Routine discharge cycles insure optimum battery performance. Meets UL standards for self-testing.

BATTERY

Maintenance-Free Lead Calcium with battery recharge per UL time standards.

OPERATING TEMPERATURE

Standard Models: 20°C to 30°C (68°F to 86°F)

UNIT CAPACITY SELECTOR

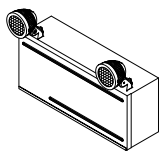
03L Lamp Models	DC Volts	Lamp Watts	Remote Capacity	Remote Watts	1 1/2 Hours	2 Hours	3 Hours	4 Hours
LM2-03L	6	3W	No	-	10.8	7	-	-
LM16-03L	6	3W	Yes	10	16	12	8	-
LM16I-03L	6	3W	Yes	10	16	12	8	-
LM33-03L	6	3W	Yes	27	33	25	17	13
LM33I-03L	6	3W	Yes	27	33	25	17	13

Note- LM33I-03L must be loaded to a minimum of 12W including remotes

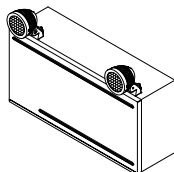
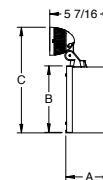
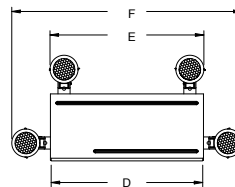
1205L Lamp Models	DC Volts	Standard Lamp	Enclosure Style	Remote Capacity	Total Watts For:			
					1 1/2 Hours	2 Hours	3 Hours	4 Hours
LM40-12V-1205L	12	5W	1	Yes	40	31	21	16
LM66-12V-1205L	12	5W	2	Yes	66	51	35	27
LM80-12V-1205L	12	5W	2	Yes	80	62	43	33
LM130-12V-1205L	12	5W	2	Yes	130	101	70	54

DIMENSIONS

Enclosure Style	A	B	C	D	E	F
1 20 Ga. (.036")	3 1/8" 9.8cm	5 3/4" 14.6cm	9 1/4" 23.5cm	13 1/2" 34.3cm	13 1/2" 33.7cm	20 1/8" 51.2cm
2 18 Ga. (.048")	4 3/4" 12.1cm	7 3/4" 19.7cm	11 1/4" 28.6cm	15 3/4" 40.0cm	15 1/2" 38.7cm	22 3/4" 57.8cm



Housing Style 1
LM2-03L
LM16-03L
LM16I-03L
LM33-03L
LM33I-03L
LM40-12V-1205L



Housing Style 2
LM66-12V-1205L
LM80-12V-1205L
LM130-12V-1205L