



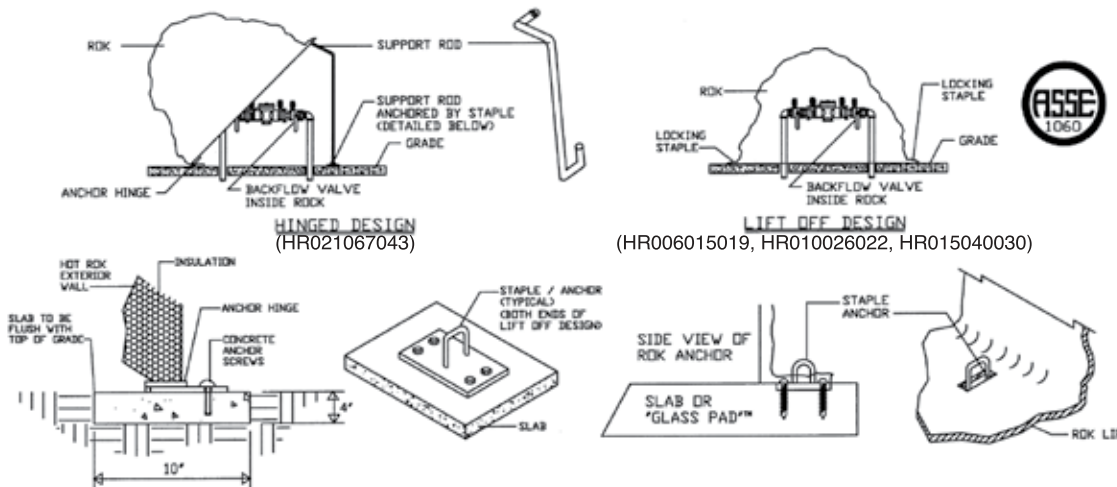
VALVE & PUMP ENCLOSURES

SPECIFICATION (INSULATED WITH HEAT):

The decorative landscaping enclosure, certified (and labeled) to ASSE 1060, shall be of min. 1/8" tk. thixotropic polyester resin reinforced w/fiberglass strand. Exterior will be a UV inhibited isophthalic polyester gel coat, colored as specified. Insulation shall be min. 1-1/4" tk. (R8), unicellular non-wicking, polyisocyanate, frothed or sprayed in place (not glued or pinned). Enclosure shall utilize a flip up design for maintenance access or provide for removal of the entire unit. Drains shall be sized for full port backflow discharge and designed for "one way" exit, inhibiting intrusion of debris and/or vermin. Enclosure shall be anchored to a concrete slab or GLASS PAD™ through the hinge from within the enclosure w/steel anchors with the opposite end requiring a single padlock for security purposes.

Heat will protect the piping and equipment from exterior temperatures to -30° F and be thermo- statically controlled. UL or ETL listed self-regulating cable(s) or wall mounted air heater(s) will be sized to maintain the equipment at +40°F, in accordance with N.F.P.A. 3-3.1.8 & 3-6.1.3.2. Heat source shall be mounted a minimum of 7" above the slab unless it is UL or ETL certified and NEC approved for submersion. Power source shall be protected with a ground fault interrupting receptacle, U.L. 943, N.E.M.A.3R, installed by others inside the enclosure.

HOT ROK (INSULATION & HEAT)	Old HOT ROK NO. (INSULATION & HEAT)	Inside Width	Inside Length	Inside Height	Heat	Shipping Weight	Pad Size	GLASS PAD	OLD GLASS PAD
HR006015019	GHR.75	06	15	19	30W	20#	27 x 21	GG018024005	GPGLR.75
HR010026022	GHR1	10	26	22	60W	55#	40 x 30	GG030040005	GPGLR1
HR015040030	GHR2	15	40	30	90W	85#	51 x 26	GG023048005	GPGLR2
HR021067043	GHR3	21	67	43	2-90W	325#	90 x 40		N/A



NOTES:

- PROVIDE APPLICABLE GFI PROTECTED POWER, U.L. STND. 943-NEMA 3R, INSIDE ENCLOSURES REQUIRING HEAT. MOUNT AT LEAST 6" ABOVE ANY WATER DISCHARGE POINT AND NEAR THE PIPE RISER ON THE ENCLOSURE ACCESS SIDE - OR - PER LOCAL CODE.
- POUR A FULL CONCRETE PAD 4" THICK AROUND VALVE, ALLOWING A MINIMUM 1" RADIAL SPACE BETWEEN VALVE RISERS AND PAD.
OR
INSTALL ON A "GLASS PAD™".
- PLACE HOT ROK® OVER VALVE ONTO PAD OR FOOTER.
- USE A MASONRY BIT TO DRILL THROUGH ANCHOR HINGE.
A. INSERT CONCRETE SCREWS AND BOLT FIRMLY TO CONCRETE.
- MARK AND MOUNT LOCKING STAPLE.
- FOR ROKS USING SELF REGULATING TAPE HEAT SOURCE, SECURE TAPE TO VALVE WITH WIRE TIES OR ELECTRICIAN'S TAPE. NO COVERING IS NECESSARY. THE HOT ROK® PROVIDES THE NECESSARY INSULATION.
- PLUG THE HEAT SOURCE INTO THE SPECIFIED CIRCUIT, AFTER VERIFYING PROPER VOLTAGE
- LOWER ROK AND SECURE STAPLE VIA PAD LOCK.



MEMBERS OF:



Job Name _____	Contractor _____
Job Location _____	Approval _____
Engineer _____	Contractor's P.O. No. _____
Approval _____	Representative _____

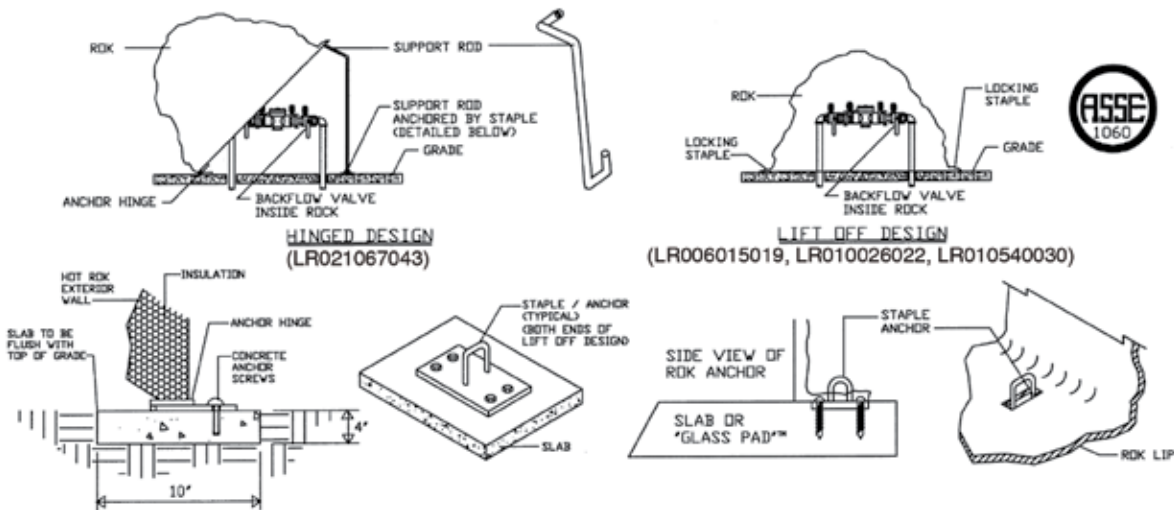


VALVE & PUMP ENCLOSURES

SPECIFICATION (INSULATED WITHOUT HEAT):

The decorative landscaping enclosure, certified (and labeled) to ASSE 1060, shall be of min. 1/8" tk. thixotropic polyester resin reinforced w/fiberglass strand. Exterior will be a UV inhibited isophthalic polyester gel coat, colored as specified. Insulation shall be min. 1-1/4" tk. (R8), unicellular non-wicking, polyisocyanate, frothed or sprayed in place (not glued or pinned). Enclosure shall utilize a flip up design for maintenance access or provide for removal of the entire unit. Drains shall be sized for full port backflow discharge and designed for "one way" exit, inhibiting intrusion of debris and/or vermin. Enclosure shall be anchored to a concrete slab or GLASS PAD™ through the hinge from within the enclosure w/steel anchors with the opposite end requiring a single padlock for security purposes.

HOT ROK (INSULATED)	Old HOT ROK NO. (NO HEAT)	Inside Width	Inside Length	Inside Height	Shipping Weight	Pad Size	GLASS PAD	OLD GLASS PAD
LR006015019	GHR.75	06	15	19	20#	27 x 21	GG018024005	GPGLR.75
LR010026022	GHR1	10	26	22	55#	40 x 30	GG030040005	GPGLR1
LR015040030	GHR2	15	40	30	85#	51 x 26	GG023048005	GPGLR2
LR021067043	GHR3	21	67	43	325#	90 x 40		N/A



NOTES:

- POUR A FULL CONCRETE PAD 4" THICK AROUND VALVE, ALLOWING A MINIMUM 1" RADIAL SPACE BETWEEN VALVE RISERS AND PAD.
OR
INSTALL A "GLASS PAD™".
- PLACE POLY ROK™ OVER VALVE ONTO PAD OR FOOTER.
- MARK LOCKING STAPLE. POSITION ON CONCRETE.
- USE A MASONRY BIT TO DRILL THROUGH ANCHOR STAPLE.
A. INSERT CONCRETE SCREWS AND BOLT FIRMLY TO CONCRETE.
- LOWER ROK AND SECURE STAPLE VIA PAD LOCK.



MEMBERS OF:



Job Name _____ Contractor _____

Job Location _____ Approval _____

Engineer _____ Contractor's P.O. No. _____

Approval _____ Representative _____

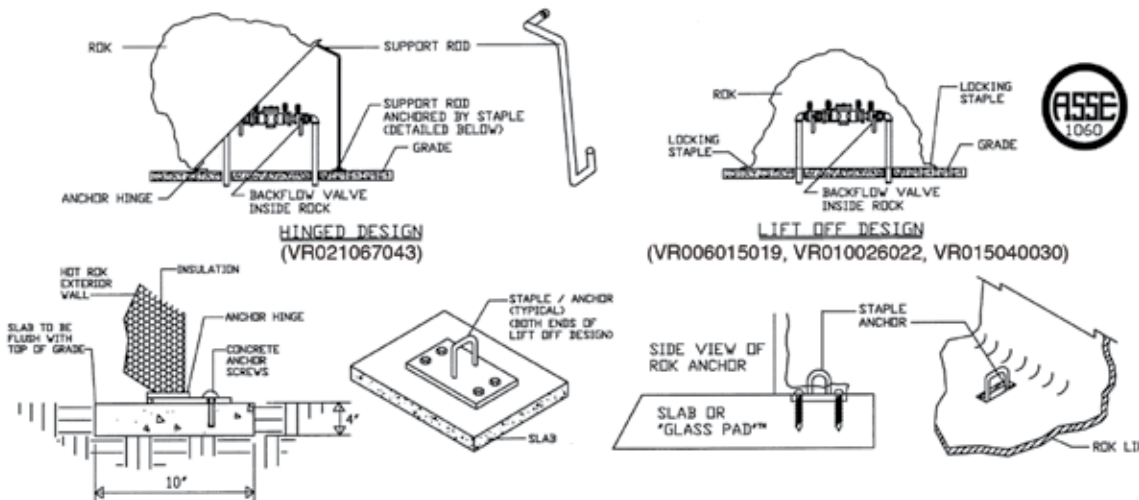


VALVE & PUMP ENCLOSURES

SPECIFICATION (NO INSULATED/NO HEAT):

The decorative landscaping enclosure, certified (and labeled) to ASSE 1060, shall be of min. 1/8" tk. thixotropic polyester resin reinforced w/fiberglass strand. Exterior will be a UV inhibited isophthalic polyester gel coat, colored as specified. Insulation shall be min. 1-1/4" tk. (R8), unicellular non-wicking, polyisocyanate, frothed or sprayed in place (not glued or pinned). Enclosure shall utilize a flip up design for maintenance access or provide for removal of the entire unit. Drains shall be sized for full port backflow discharge and designed for "one way" exit, inhibiting intrusion of debris and/or vermin. Enclosure shall be anchored to a concrete slab or GLASS PAD™ through the hinge from within the enclosure w/steel anchors with the opposite end requiring a single padlock for security purposes.

HOT ROK (NO INS. OR HEAT)	Old HOT ROK NO.	Inside Width	Inside Length	Inside Height	Shipping Weight	Pad Size	GLASS PAD	OLD GLASS PAD
VR006015019	VGGLR.75	09	18	20	20#	27 x 21	GG018024005	GPGLR.75
VR010026022	VGGLR1	13	29	23	41#	40 x 30	GG030040005	GPGLR1
VR015040030	VGGLR2	18	43	31	75#	51 x 26	GG023048005	GPGLR2
VR021067043	VGGLR3	24	70	44	310#	90 x 40		N/A



NOTES:

- POUR A FULL CONCRETE PAD 4" THICK AROUND VALVE, ALLOWING A MINIMUM 1" RADIAL SPACE BETWEEN VALVE RISERS AND PAD.
OR
INSTALL A "GLASS PAD™" MODEL #GG027037005 AND GG022056005.
- PLACE POLY ROK™ OVER VALVE ONTO PAD OR FOOTER.
- MARK LOCKING STAPLE. POSITION ON CONCRETE.
- USE A MASONRY BIT TO DRILL THROUGH ANCHOR STAPLE.
A. INSERT CONCRETE SCREWS AND BOLT FIRMLY TO CONCRETE.
- LOWER ROK AND SECURE STAPLE VIA PAD LOCK.



MEMBERS OF:



Job Name _____ Contractor _____

Job Location _____ Approval _____

Engineer _____ Contractor's P.O. No. _____

Approval _____ Representative _____
