

JOB _____ TYPE _____
 NOTES _____ APPROVALS _____

FEATURES

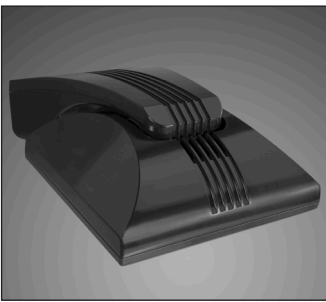
- Independently aimed LEAR™ modules
- 355° rotation and 70° tilt module adjustment and -5° to +5° housing adjustment
- Wide range of drive currents available
- Design software interface for user-defined Type X distribution creation
- Traditional NEMA distributions available
- IP66 sealed optical chamber

Certifications

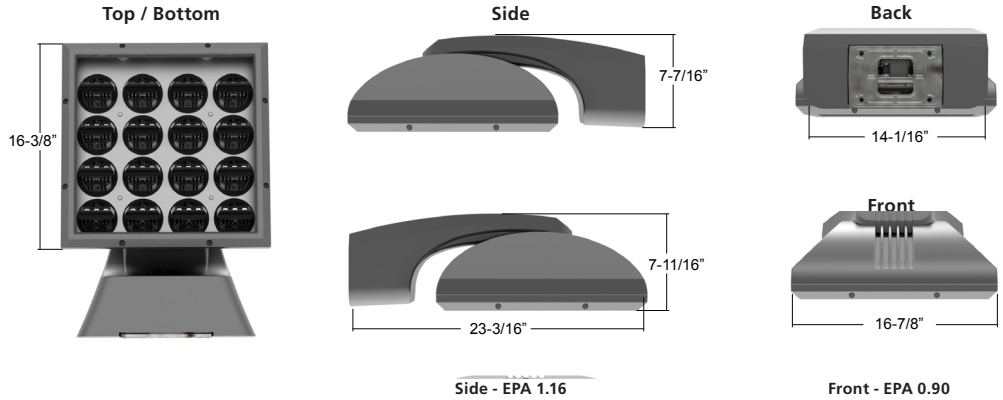


3000K and warmer CCTs only

SPECIFICATIONS



Max Weight = 55 lbs.



ORDERING CODE

ARWX16							
Fixture	Mount Direction	Distribution	Electrical Module			Fixture Finish	Photocell Options
	D Down U Up	S Spot X ¹ Type X Type X IES File Name	<u>Color Temperature</u> 3K 3000K 4K 4000K 5K 5000K	<u>Drive Current</u> 35 350mA 40 400mA 45 450mA 50 500mA 55 550mA 60 600mA	<u>Voltag</u> 65 650mA 70 700mA 75 750mA 80 800mA 85 850mA 90 900mA	UV 120-277V 347 347V 480 480V	LG Light Gray BL Black DB Dark Bronze GT Graphite PS Platinum Silver TT Titanium WH White CC ² Custom Color
							A25-7 7-pin Photocell Receptacle A30 120V Button Photocell A31 208V Button Photocell A32 240V Button Photocell A33 277V Button Photocell A34 347V Button Photocell A35 480V Button Photocell
Fuse Options	NFO Option	Controls Options			Battery Backup		
SF 120, 277, 347 Line Volts DF 208, 240, 480 Line Volts	NFO Neighbor Friendly Optic	<u>Wireless</u> WIR-RMI-IO 120-480V, 1000' range, wiSCAPE RF control system with on/off/dim, alerts, monitoring and metering capabilities <u>SiteSync Lighting Control</u> SWP ^{3,4} SiteSync Wireless Pre-Commission SWPM ^{3,4,5} SiteSync Wireless Pre-Commission w/ Occupancy Sensor	<u>Control Accessories</u> SWUSB [†] SiteSync loaded on USB flash drive (Windows® operating system only) SWTAB [†] SiteSync Windows® based Tablet SWBRG [†] SiteSync Wireless Bridge Node WIR-RME-L wiSCAPE External Fixture Module	<u>Motion/Occupancy Sensor</u> SCL ⁶ Fixture Mounted Occupancy Sensor up to 16' SCH ⁶ Fixture Mounted Occupancy Sensor from 16' to 30'	EM ⁷ Integral Emergency Battery Backup	For Pole Spec Select: http://www.kimlighting.com/products/arms_and_poles/ For Control Spec Select: http://trpssl.com/index.html	

† When ordering with SiteSync, one of the following interface options must be chosen and ordered separately. Each option contains the SiteSync License, GUI and Bridge Node.

¹ User-defined distributions must include IES# file where indicated
² Custom colors subject to additional charges, minimum quantities and extended lead times. Consult representative.
³ Not available with other control or sensor options.
⁴ Specify group and zone. See SiteSync product page www.hubbelling.com/controls/sitesync for more details.
⁵ Specify time delay; dimming level and mounting height.
⁶ Only applies when mounted in down position.
⁷ Battery backup is rated at -40 to 85°C.

Microsoft, Encarta, MSN, and Windows are either registered trademarks or trademarks of Microsoft Corporation in the United States and/or other countries.

Kim Lighting reserves the right to change specifications without notice.

Color Temp Field Angle - 10% max	Photometrics (3000K)											
Drive Current	350 mA	400 mA	450 mA	500 mA	550 mA	600 mA	650 mA	700 mA	750 mA	800 mA	850 mA	900 mA
Lumens	3755	4009	4262	4515	4992	5022	5276	5529	5783	6036	6290	6543
Maximum Candela	54329	58004	61664	65324	72225	72660	76335	79995	83670	87331	91006	94666
Maximum Candela Angle H	0	0	0	0	0	0	0	0	0	0	0	0
Maximum Candela Angle V	1	1	1	1	1	1	1	1	1	1	1	1
Horizontal Beam Angle (50%)	11.8	11.8	11.8	11.8	11.8	11.8	11.8	11.8	11.8	11.8	11.8	11.8
Vertical Beam Angle (50%)	13.4	13.4	13.4	13.4	13.4	13.4	13.4	13.4	13.4	13.4	13.4	13.4

Color Temp Field Angle - 10% max	Photometrics (4000K)											
Drive Current	350 mA	400 mA	450 mA	500 mA	550 mA	600 mA	650 mA	700 mA	750 mA	800 mA	850 mA	900 mA
Lumens	4753	5054	5356	5658	6156	6261	6562	6864	7165	7467	7768	8070
Maximum Candela	70927	75419	79926	84432	91864	93431	97923	102429	106921	111428	115919	120426
Maximum Candela Angle H	0	0	0	0	0	0	0	0	0	0	0	0
Maximum Candela Angle V	1	1	1	1	1	1	1	1	1	1	1	1
Horizontal Beam Angle (50%)	11.1	11.1	11.1	11.1	11.1	11.1	11.1	11.1	11.1	11.1	11.1	11.1
Vertical Beam Angle (50%)	13.3	13.3	13.3	13.3	13.3	13.3	13.3	13.3	13.3	13.3	13.3	13.3

Color Temp Field Angle - 10% max	Photometrics (5000K)											
Drive Current	350 mA	400 mA	450 mA	500 mA	550 mA	600 mA	650 mA	700 mA	750 mA	800 mA	850 mA	900 mA
Lumens	4979	5315	5651	5987	6619	6659	6995	7332	7668	8004	8340	8676
Maximum Candela	74300	79314	84328	89342	95856	99370	104384	109413	114427	119441	124455	128521
Maximum Candela Angle H	0	0	0	0	1	0	0	0	0	0	0	0
Maximum Candela Angle V	1	1	1	1	1	1	1	1	1	1	1	1
Horizontal Beam Angle (50%)	11.1	11.1	11.1	11.1	11.5	11.1	11.1	11.1	11.1	11.1	11.1	11.1
Vertical Beam Angle (50%)	13.3	13.3	13.3	13.3	13.5	13.3	13.3	13.3	13.3	13.3	13.3	13.3

Optical System	Electrical										Dimming						
	Current	System Watts	Line Voltage		Amps AC						Min. Power Factor	Max THD (%)	Dimming Range	Source current out of 0-10V purple wire		Absolute voltage range on 0-10V (+) purple wire	
			VAC	Hz	120	208	240	277	347	480				Min	Max	Min	Max
LEAR™	350 mA	60	120-480	50/60	0.50	0.29	0.25	0.22	0.17	0.12	>0.9	20	10% to 100%	0mA	1mA	0V	10V
	400 mA	68			0.57	0.33	0.28	0.25	0.20	0.14							
	450 mA	75			0.63	0.36	0.31	0.27	0.22	0.16							
	500 mA	85			0.71	0.41	0.35	0.31	0.24	0.18							
	550 mA	92			0.77	0.44	0.38	0.33	0.27	0.19							
	600 mA	102			0.85	0.49	0.43	0.37	0.30	0.21							
	650 mA	111			0.92	0.53	0.46	0.40	0.32	0.23							
	700 mA	120			1.00	0.57	0.50	0.43	0.34	0.25							
	750 mA	128			1.07	0.62	0.53	0.46	0.37	0.27							
	800 mA	137			1.14	0.66	0.57	0.49	0.39	0.28							
	850 mA	145			1.21	0.70	0.60	0.52	0.42	0.30							
900 mA	154	1.28	0.74	0.64	0.55	0.44	0.32										

TM-21 LIFETIME CALCULATION*

Optical System	Ambient Environment °C	Projected Lumen Maintenance			Reported L70
		16	26	TM-21 48	
LEAR™	25	91.12%	85.65%	74.75%	> 48,000 hrs

*Projected lifetime from 700mA LM-80 data.

LED COLOR

	Spectroradiometric		
	3K	4K	5K
Designation	3000K	4000K	5000K
CRI Minimum	≥72	≥72	≥72
S/P Ratio	1.33	1.66	1.78

Kim Lighting reserves the right to change specifications without notice. Consult factory for Amber, Turtle Friendly, Gulf Coast and Observatory applications.

SPECIFICATIONS

Housing:

- Low copper aluminum alloy die-casting designed as one-piece with external cooling ribs.
- Solid cast aluminum walls between the housing and arm create a thermal barrier between the optical and electrical compartments.
- Molded silicone gaskets throughout to insure sealing between the two compartments and ingress protection.
- Housing designed with integral Type X thermal transfer "turrets" utilized for both thermal transfer and to secure location of the LEAR™ Optical Module. The turrets are spaced in rows of 4 X 4, designed to optimize photometric performance for standard and Type X user-defined distributions.
- Tempered UV coated flat lens for low glare.
- IK09 rated enclosure protects electrical equipment against external mechanical impacts.

Lens Frame:

- One-piece, die-cast, low copper aluminum alloy secured to housing with eight captive, tamper-resistant stainless steel fasteners.
- Molded silicone gasket assembles into a cast channel in the doorframe sealing the 3/16" thick low iron-content, tempered glass lens against the housing upon closure.
- IP66 certified to protect the interior components from dust and water ingress.

Type X LEAR™ Optical Module:

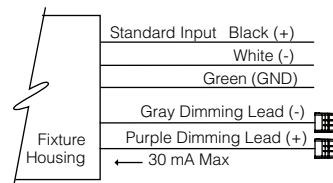
- Turret alignment and thermal transfer design allow for freedom of adjustability and precision of the LEAR LED array.
- Optimized standard distribution or user-defined beam patterns.
- 3000K, 4000K, 5000K standard CCT. Amber and other custom color temperatures available.
- Factory adjusted distributions created from user-defined IES files.
- Toolless 355° rotation adjustment and 70° tilt adjustment with a tamper resistant fastener.
- Type X LEAR modules are IP66 rated and utilize six high output LEDs, positioned beneath a precision, high purity molded acrylic prism.
- Targeted optics minimize pixilation concerns to provide outstanding performance, uniformity and glare control.

Electrical Components:

- Standard programmable driver for variable drive current settings from 350mA to 900mA.
- Electrical components are located in the arm. Molded silicon gasket seal to isolate arm from the optical chamber.
- Maximum lightning surge current 20KA with thermally protected varistor technology. Surge suppression is series circuited preventing total fixture failure.
- Open circuit fault will turn off the luminaire protecting the sensitive electronics and acting as a signal for maintenance.
- Programmable Driver is rated for -40°F starting.
- "Thermal Shield" Primary Side thermister Protection for sustainable life of LEAR modules and electronic components.

Dimming:

- Dimming range from 10% to 100% by the use of its standard 0-10V interface on the programmable driver.
- Modular wiring harness in the service area provided for user access to the dimming circuitry.
- Dimming circuitry compatible with 0-10V user-defined control devices.
- Optional factory programmed dimming profile.



Arm:

- Low copper aluminum alloy, two piece die-casting designed and gasketed to function as one-piece.
- External cooling ribs create continuous aesthetic and thermal path.
- Molded silicone gasket seals the wiring channel separating the arm from the housing thermally insulating the electronic components.
- Main power quick-disconnect provided between the die-cast speed mount bracket and the fixture housing. Quick-disconnect plugs are glass-filled thermoplastic assemblies attached to the die-castings, self-aligning, and rated for 10,000 matings. Male portion of the plug is mounted to die-cast speed mount with wires supplied for incoming power connection.

Female portion is mounted to the fixture with wires terminating in a quick-disconnect plug for attachment to the driver assembly. Power to the electrical components is immediately disconnected when fixture is removed from speed mount.

- Luminaire housing adjustable -5° to +5° via locking fastener under the arm cover.

Finish:

- Fade and abrasion resistant, electrostatically applied, thermally cured, triglycidal isocyanurate (TGIC) polyester powdercoat.
- Standard colors include (BL) Black, (DB) Dark Bronze, (GT) Graphite, (PS) Platinum Silver, (LG) Light Gray, (TT) Titanium, (WH) White, and (CC) Custom Color (Include RAL#).

Fuse Options:

SF for 120, 277 and 347 Line Volts
DF for 208, 240 and 480 Line Volts.

- High temperature fuse holders factory installed inside the fixture arm. Fuse is included.

Certifications and Listings:

- UL 1598 Standard for Luminaires.
- UL 8750 Standard for Safety for Light Emitting Diode (LED) Equipment for use in Lighting Products.
- CSA C22.2#250.0 Luminaires.
- ANSI C136.31-2010 3G Vibration tested and compliant.
- RoHS compliant.
- IP66 certified.
- IEC 66262 Mechanical Impact Code IK09.
- IDA approved, 3000K and warmer CCTs only.

CAUTION:

- Fixtures must be grounded in accordance with national, state and/or local electrical codes. Failure to do so may result in serious personal injury.

WARRANTY:

- For full warranty see: <http://www.hubbellighting.com/resources/warranty>

Kim Lighting reserves the right to change specifications without notice.

CONTROLS

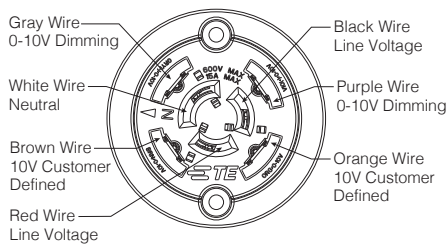
Photocell Receptacle

A25-7

Fully gasketed and wired 7-pin receptacle. Easy access location above the electrical compartment. 7-pin construction allows user-defined interface and control definition of operational performance. ANSI twist-lock control module by-others.

Standard customer operation modes:

1. (Black and Red leads) Traditional on/off photoelectric control.
2. (Gray and Purple leads) 0-10V dimming, 5-pin wireless photoelectric control for added dimming feature.
3. (Brown and Orange leads) 10V 7-pin wireless photoelectric control for dimming and additional I/O connections for customer use.



Button Photocell

A30 for 120V, **A31** for 208V, **A32** for 240V, **A33** for 277V, **A35** for 347V, **A34** for 480V,

Factory installed photocell inside housing with a fully gasketed sensor on the side wall. For multiple fixture mountings, one fixture is supplied with a photocell to operate the others.

Wireless Controls

wiSCAPE™

Hubbell Control Solution's wiSCAPE™ wireless control modules allow an individual fixture to be managed, monitored and measured. The modules communicate securely over a robust certified meshed radio signal. The wiSCAPE modules provide on/off/dim control, external device input, alerts and metering.

WIR-RMI-IO

wiSCAPE Internal Module, 120-480V, 1000ft range (LOS), 3 Digital Inputs/1 Analog Input, 2 Outputs.

WIR-RME-L

wiSCAPE External Module, 120-480V, 1000ft range (LOS), Internal Photocell, 1 Digital Input, Compatible with the A-25-7H option.

SiteSync™¹

SiteSync™ wireless control system for reduction in energy and maintenance cost while optimizing light quality 24/7. See ordering information or visit www.hubbellighting.com/products/sitesync for more details.

Fixture Mounted Occupancy Sensor up to 16'

SCL

Fixture Mounted Occupancy Sensor up to 16' - Outdoor occupancy sensor with 0-10V interface dimming control mounts directly to fixture. Wide 360° pattern. Module colors available Black, Gray, and White.

Ordering Example: SCL/277²/BL³

Fixture Mounted Occupancy

Sensor 16' to 30'

SCH

Fixture Mounted Occupancy Sensor 16' to 30' - Outdoor occupancy sensor with 0-10V interface dimming control mounts directly to fixture. Wide 360° pattern. Module colors available Black, Gray, and White.

Ordering Example: SCH/277²/BL³

Kim Lighting reserves the right to change specifications without notice.

¹PRECOMMISSIONED SITESYNC ORDERING INFORMATION: When ordering a fixture with the SiteSync lighting control option, additional information will be required to complete the order. The SiteSync Commissioning Form or alternate schedule information must be completed. This form includes Project location, Group information, and Operating schedules. For more detailed information please visit www.HubbellLighting.com/products/sitesync or contact Hubbell Lighting tech support at (800) 345-4928.

SiteSync fixtures with occupancy sensor (SWPM) require the mounting height of the fixture for selection of the lens.

Examples:

SiteSync only : ARWX25/1/3K35UV/PS/US/SWP

SiteSync with Motion Control: ARWX25/1/3K35UV/PS/US/SWPM-20F

MOB ORDERING INFORMATION: When ordering a fixture with a dimming occupancy sensor option (MOB), please specify the appropriate information. These settings are specified in the ordering as shown in the example below.

ARX25/1/3k35UV/PS/US/MOB - 1 to 30 min - 33%or 50% - ?? / DBT

High to Dim Delay Low Level Mounting Height (ft.)

²Voltage, ³Color