

Type:
Job:
Catalog number:

Approvals:

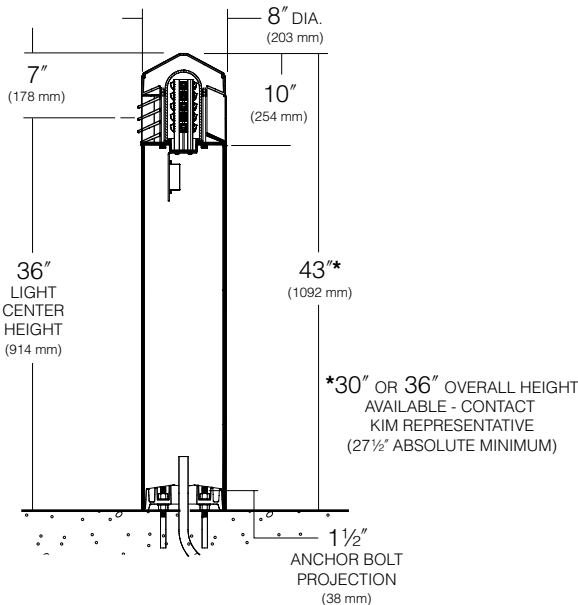
VSB2 /	/
Fixture	Electrical Module Top Cap and Shaft Finish
See page 2	

Date:
Page: 1 of 4

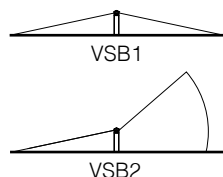
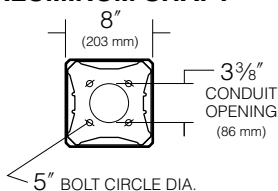
Specifications

VSB Models
10 - 20 Diodes

VSB2 - Dual Function Luminaire (Aluminum Shaft)
Maximum weight: 35 lb



**BASE PLAN
VSB
ALUMINUM SHAFT**



Top Cap: One-piece die-cast, low copper (<0.6% Cu) aluminum 3/16" minimum thickness, secured to louvers by concealed stainless steel allen screws in keyhole slots. For relamping access, allen screws shall not require complete removal.

Louvers: One-piece sand-cast with horizontal and vertical blades. Horizontal louvers shall provide 270° of down-lighting with source cutoff above horizontal. Vertical louver shall provide 90° of non-cutoff lighting. Horizontal louver blades shall have a 1 3/4" depth, and be angled 25° from the horizontal. Vertical louver blades shall have a 1 3/4" depth with a 45° spacing. Louver castings shall be secured to shaft by four internal tie rods.

Lamp Enclosure: One-piece tempered molded glass with internal flutes and full silicone gasketing at bottom edge.

Fixture Head: Allows flow-through ventilation around and above the lamp enclosure.

Shaft: One-piece extruded aluminum, .156" minimum wall thickness with a heavy cast aluminum anchor base concealed within the shaft. Hex socket stainless steel screws shall lock shaft onto the cast anchor base.

Electronic Module: All electrical components are either UL or ETL recognized, mounted on a single plate and factory prewired with quick disconnect plugs. Driver is rated for -40°F starting and has a 0-10V dimming interface for multi-level illumination options.

Optical Module: Each LED equipped with a directional optic for maximum beam angle projecting through louver stack spacings. LED boards to be mounted to an anodized inter-locking heat sink extrusion. (Type I) two 5-LED boards for a total of 10-LED. (Type III) three 5-LED boards for a total of 15-LED. (Type V) four 5-LED boards for a total of 20-LED. Available in 580nm Amber, 3000K, 4000K and 5000K color temperatures.

Anchor Bolts: Four 3/8" x 10" + 2" zinc plated L-hooks, each with two nuts, washers and a rigid pressed board template.

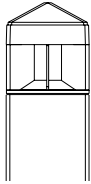
Finish: Each luminaire receives a fade and abrasion resistant, electrostatically applied, thermally cured, triglycidal isocyanurate (TGIC) polyester powdercoat finish.

Listed to: UL 1598 Standard for Luminaires - UL 8750 Standard for Safety for Light Emitting Diode (LED) Equipment for use in Lighting Products and CSA C22.2#250.0 Luminaires. RoHS compliant. Meets Buy American provisions within ARRA.

Warranty: For full warranty see <http://www.hubbellighting.com/resources/warranty>.

CAUTION: Fixtures must be grounded in accordance with national, state and/or local electrical codes. Failure to do so may result in serious personal injury.

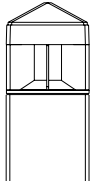
Type:
 Job:





Standard Features

<p>Fixture</p>	<p>Cat. No. VSB2 Dual Function, Aluminum Shaft, Gabled Top</p>			
<p>Electrical Module LED=Light Emitting Diodes</p>	<p>Cat. Nos. for LED Electrical Modules available:</p> <table border="0" style="width: 100%;"> <tr> <td style="text-align: center; vertical-align: top;"> <p>xL</p> <p>Source:</p> <p><input type="checkbox"/> 10L= 10 LED (IES Type I)</p> <p><input type="checkbox"/> 15L= 15 LED (IES Type III)</p> <p><input type="checkbox"/> 20L= 20 LED (IES Type V)</p> </td> <td style="text-align: center; vertical-align: top;"> <p>xK</p> <p>Color Temperature:</p> <p><input type="checkbox"/> 2K = 580nm - Amber</p> <p><input type="checkbox"/> 3K = 3000K</p> <p><input type="checkbox"/> 4K = 4000K</p> <p><input type="checkbox"/> 5K = 5000K</p> </td> <td style="text-align: center; vertical-align: top;"> <p>UV</p> <p>Voltage:</p> <p><input type="checkbox"/> UV Universal Voltage shall range from 120V-277V</p> </td> </tr> </table>	<p>xL</p> <p>Source:</p> <p><input type="checkbox"/> 10L= 10 LED (IES Type I)</p> <p><input type="checkbox"/> 15L= 15 LED (IES Type III)</p> <p><input type="checkbox"/> 20L= 20 LED (IES Type V)</p>	<p>xK</p> <p>Color Temperature:</p> <p><input type="checkbox"/> 2K = 580nm - Amber</p> <p><input type="checkbox"/> 3K = 3000K</p> <p><input type="checkbox"/> 4K = 4000K</p> <p><input type="checkbox"/> 5K = 5000K</p>	<p>UV</p> <p>Voltage:</p> <p><input type="checkbox"/> UV Universal Voltage shall range from 120V-277V</p>
<p>xL</p> <p>Source:</p> <p><input type="checkbox"/> 10L= 10 LED (IES Type I)</p> <p><input type="checkbox"/> 15L= 15 LED (IES Type III)</p> <p><input type="checkbox"/> 20L= 20 LED (IES Type V)</p>	<p>xK</p> <p>Color Temperature:</p> <p><input type="checkbox"/> 2K = 580nm - Amber</p> <p><input type="checkbox"/> 3K = 3000K</p> <p><input type="checkbox"/> 4K = 4000K</p> <p><input type="checkbox"/> 5K = 5000K</p>	<p>UV</p> <p>Voltage:</p> <p><input type="checkbox"/> UV Universal Voltage shall range from 120V-277V</p>		
<p>TGIC powder coat paint over a titanated zirconium conversion coating on fixture and shaft.</p>	<table border="0" style="width: 100%;"> <tr> <td style="vertical-align: top;"> <p>Cat. No.: Color:</p> <p><input type="checkbox"/> BLS Black Gloss Smooth</p> <p><input type="checkbox"/> BLT Black Matte Textured</p> <p><input type="checkbox"/> DBS Dark Bronze Gloss Smooth</p> <p><input type="checkbox"/> DBT Dark Bronze Matte Textured</p> <p><input type="checkbox"/> GTT Graphic Matte Textured</p> <p><input type="checkbox"/> LGS Light Grey Gloss Smooth</p> </td> <td style="vertical-align: top;"> <p>Cat. No.: Color:</p> <p><input type="checkbox"/> LGT Light Grey Matte Textured</p> <p><input type="checkbox"/> PSS Platinum Silver Gloss Smooth</p> <p><input type="checkbox"/> VGT Verde Green Matte Textured</p> <p><input type="checkbox"/> WHS White Gloss Smooth</p> <p><input type="checkbox"/> WHT White Matte Textured</p> <p><input type="checkbox"/> CC¹ Custom Color</p> </td> </tr> </table> <p>NOTE: Black and Dark Bronze colors will produce slightly less louver brightness than Light Gray or White.</p> <p>¹Custom colors subject to additional charges, minimum quantities and extended lead times. Consult representative. Custom color description: _____</p>	<p>Cat. No.: Color:</p> <p><input type="checkbox"/> BLS Black Gloss Smooth</p> <p><input type="checkbox"/> BLT Black Matte Textured</p> <p><input type="checkbox"/> DBS Dark Bronze Gloss Smooth</p> <p><input type="checkbox"/> DBT Dark Bronze Matte Textured</p> <p><input type="checkbox"/> GTT Graphic Matte Textured</p> <p><input type="checkbox"/> LGS Light Grey Gloss Smooth</p>	<p>Cat. No.: Color:</p> <p><input type="checkbox"/> LGT Light Grey Matte Textured</p> <p><input type="checkbox"/> PSS Platinum Silver Gloss Smooth</p> <p><input type="checkbox"/> VGT Verde Green Matte Textured</p> <p><input type="checkbox"/> WHS White Gloss Smooth</p> <p><input type="checkbox"/> WHT White Matte Textured</p> <p><input type="checkbox"/> CC¹ Custom Color</p>	
<p>Cat. No.: Color:</p> <p><input type="checkbox"/> BLS Black Gloss Smooth</p> <p><input type="checkbox"/> BLT Black Matte Textured</p> <p><input type="checkbox"/> DBS Dark Bronze Gloss Smooth</p> <p><input type="checkbox"/> DBT Dark Bronze Matte Textured</p> <p><input type="checkbox"/> GTT Graphic Matte Textured</p> <p><input type="checkbox"/> LGS Light Grey Gloss Smooth</p>	<p>Cat. No.: Color:</p> <p><input type="checkbox"/> LGT Light Grey Matte Textured</p> <p><input type="checkbox"/> PSS Platinum Silver Gloss Smooth</p> <p><input type="checkbox"/> VGT Verde Green Matte Textured</p> <p><input type="checkbox"/> WHS White Gloss Smooth</p> <p><input type="checkbox"/> WHT White Matte Textured</p> <p><input type="checkbox"/> CC¹ Custom Color</p>			

Type:
 Job:

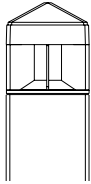


Standard Features

<p>Battery Back-up Cat. No. <input type="checkbox"/> EM <input type="checkbox"/> No Option</p>	<p>Internal battery pack provides 90 minutes of supplemental light at 50% of initial lamp lumens.</p>	 <p>battery back-up</p>
<p>Optional Duplex Receptacle Cat. No. <input type="checkbox"/> DR <input type="checkbox"/> DR-GFI <input type="checkbox"/> No Option</p>	<p>Mounted 18" from bottom of shaft with a gasketed While-In-Use cover with locking tab. Painted to match bollard. DR weather proof duplex receptacle rated 20A, 125V. DR-GFI weather proof duplex receptacle with ground fault circuit interrupter rated 20A, 125V.</p>	
<p>0-10V Dimming Interface</p>	<p>Driver has a 0-10V dimming interface with a dimming range of 10-100%. Is compatible with most control systems. Note: Not compatible with current sourcing dimmers. Controls compatible via Gray and Purple dimming lead.</p>	

Type:

Job:



Lumen Data

Electrical Drive Current - @350mA						
Volts - AC	Type 1		Type 3		Type 5	
	Amps - AC	System Watts	Amps - AC	System Watts	Amps - AC	System Watts
120	0.11	13	0.16	19	0.21	25
208	0.06	13	0.09	19	0.12	25
240	0.05	13	0.08	19	0.10	25
277	0.05	13	0.07	19	0.09	25

B.U.G. Rating (TM15) in Lumens where B = Backlight, U = Uplight, G = Glare			
Temperature	TYPE 1	TYPE 3	TYPE 5
3000K	N/A	N/A	B1 U3 G2
4000K	N/A	N/A	B1 U3 G2
5000K	N/A	N/A	B1 U3 G2

Absolute Lumens			
Temperature	TYPE 1	TYPE 3	TYPE 5
3000K	N/A	N/A	1073
4000K	N/A	N/A	1101
5000K	N/A	N/A	1113

LED performance and lumen output continues to improve at a rapid pace. Log onto www.kimlighting.com to download the most current photometric files from Kim Lighting's IES File Library. For custom optics and color temperature configurations, contact factory.