

JOB \_\_\_\_\_ TYPE \_\_\_\_\_

NOTES \_\_\_\_\_ APPROVALS \_\_\_\_\_

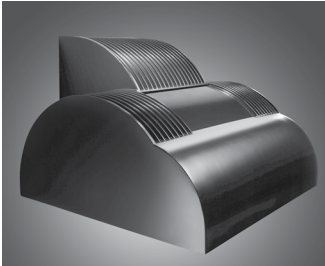
### FEATURES

- Full Cutoff PicoEmitter technology
- Available in 580nm, 3000K, 4000K and 5000K standard CCT
- Type 2, 3, 4 distributions
- 0-10V dimming drivers standard
- Sealed optical chamber

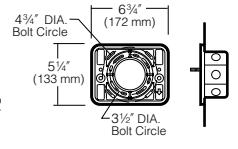
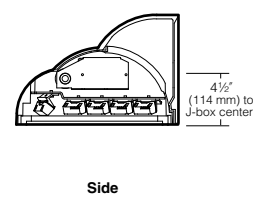
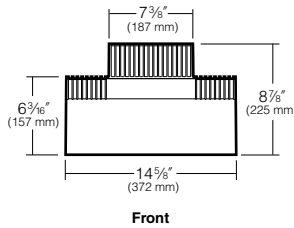
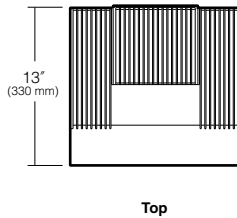
### Certifications



### SPECIFICATIONS



Max. Weight = 26 lbs.



**Mounting Plate**  
Attaches directly to any standard 4" J-box (by others)

### ORDERING CODE

Fixture			Electrical Module			Fixture Finish
Housing	Distribution	Drive Current	Source	Color Temperature <sup>1</sup>	Voltages	
WD14U Small, Up	2 Type II	E35 350mA PicoEmitter	60L 60 LEDs, 65W	2K 580nm <sup>22</sup>	120 120V	BL Black
WD14D Small, Down	3 Type III			3K 3000K	208 208V	DB Dark Bronze
	4 Type IV			4K 4000K	240 240V	GT Graphite
				5K 5000K	277 277V	LG Light Gray
					347 347V <sup>3</sup>	PS Platinum Silver
					480 480V <sup>3</sup>	TT Titanium
						WH White
						CC Custom Color, consult representative

Photocell Options	Fuse Options	Lens Options	NFO Option	Other Options	Control Options
<b>A25-7</b> 7-pin Photocell Receptacle <b>A30</b> 120V Button Photocell <b>A31</b> 208V Button Photocell <b>A32</b> 240V Button Photocell <b>A33</b> 277V Button Photocell <b>A34</b> 480V Button Photocell <b>A35</b> 347V Button Photocell	<b>SF</b> 120, 277, 347 Line Volts <b>DF</b> 208, 240, 480 Line Volts	<b>LS</b> Polycarbonate Lens <sup>4</sup>	<b>NFO</b> Neighbor Friendly Optic. Photometry available for Type III/IV. All others, consult factory.	<b>SDS14</b> Shield for horizontal cutoff when fixture tilted at 5°  <b>WG14</b> 11 ga. wire guard finished to match fixture	<u>Wireless</u> <b>WIR-RML-IO</b> 120-347V, 1000' range, WiScape RF mesh control system with off/on/dim, motion, photo, GPS location, alert, monitoring and metering capabilities.

Mounting Options
<b>SCM14U</b> Surface Conduit mnt. for Up fixture w/ one 3/4" NPT conduit tap in sides and bottom  <b>SCM14D</b> Surface Conduit mnt. for Down fixture w/ one 3/4" NPT conduit tap in sides and bottom

For Control Spec Select: <http://trpssl.com/index.html>

<sup>1</sup> For custom optics and color temperature configurations, contact factory.  
<sup>2</sup> Turtle friendly. Maximum 500mA drive current for 2K amber option.  
<sup>3</sup> 347V & 480V currents may be supplied with step-down transformer.  
<sup>4</sup> Not available for UP version. Use only when vandalism is anticipated to be high. Required only for vandal protection in locations where fixtures can be reached by unauthorized persons.

Kim Lighting reserves the right to change specifications without notice.

**LUMINAIRE PERFORMANCE**

Spectroradiometric			
	3000K Average	4200K Average	5100K Average
Correlated Color Temp. CCT (K)	2800K-3175K	3800K-4600K	4600K-5600K
Color Rendering Index (CRI)	≤80	≤80	≤70
Power Factor	>.90	>.90	>.90

Projected Lumen Maintenance		
mA	100,000 hrs	(Calculated L70)
350	93.83%	657,000 Hrs.

Electrical Drive Current		
Volts - AC	Amps - AC	System Watts
120	0.54	65
208	0.31	65
240	0.27	65
277	0.23	65
347	0.19	65
480	0.14	65

B.U.G. Rating (TM15) in Lumens wher B = Backlight, U = Uplight, G = Glare					
Temperature	TYPE 2	TYPE 3	TYPE 3 NFO	TYPE 4	TYPE 4 NFO
3000K	B1 U0 G1	B1 U0 G1	N/A	B1 U0 G1	B0 U0 G1
4200K	B2 U0 G2	B1 U0 G1	N/A	B1 U0 G1	B0 U0 G1
5100K	B2 U0 G2	B1 U0 G1	N/A	B1 U0 G1	B0 U0 G1

Absolute Lumens					
Temperature	TYPE 2	TYPE 3	TYPE 3 NFO	TYPE 4	TYPE 4 NFO
3000K	3937	3868	N/A	3823	3120
4200K	5104	5015	N/A	4956	4046
5100K	5460	5365	N/A	5302	4328

LED performance and lumen output continues to improve at a rapid pace. Log onto [www.kimlighting.com](http://www.kimlighting.com) to download the most current photometric files from Kim Lighting's IES File Library.  
For custom optics and color temperature configurations, contact factory.

Kim Lighting reserves the right to change specifications without notice.

**SPECIFICATIONS**

**Housing:**

- Optical housing is a one-piece, die-cast low copper (<0.6% Cu) aluminum alloy with integral cooling fins. Rotates against gear housing to provide 10° of adjustment with degree markers cast into the housing. At 0° adjustment, lens is totally concealed from view above horizontal with fixture aimed downward.
- Gear Housing is one-piece die-cast, low copper (<0.6% Cu) aluminum alloy with integral cooling fins. Fastens to mounting plate with keyhole slots freeing both hands for securing and wiring. One stainless steel socket-head screw on each side of housing frees the optical housing to rotate for aiming. Tightening the screws locks the two housings together with sealing provided by a silicone gasket. For visual aiming, adjustment may be accomplished with the fixture on.

**Lens Frame:**

- One-piece die-cast, low copper (<0.6% Cu) aluminum alloy with integral hinges and stainless steel pins. Toolless access to optical housing with sealing provided by a one-piece extruded and vulcanized silicone gasket. Lens is clear flat 3/16" thick tempered glass sealed to lens frame with a silicone gasket and retainer clips. For UP models, lens is mounted flush with frame for water run off, and is silicone sealed.

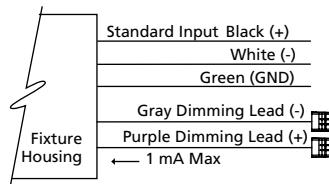
**Electronic Module:**

- All electrical components are UL and CSA recognized.
- Mounted on a single plate and factory prewired with quick-disconnect plugs.
- Module includes a driver, thermal control device and surge protector.
- Electrical module attaches to housing with no-tool hinges and latches, accessible by opening the lens frame only.
- Driver is rated for -40°F starting and has 0-10V dimming interface for multi-level illumination options.
- Class 1, 350mA
- Power Factor = >.90
- 10kV surge suppression.

- Thermal shield thermal control.
- All electronic components are IP66 rated.
- Standard programmable driver for variable drive current settings to 350mA.

**Dimming:**

- 10% to 100% dimming by the use of standard 0-10V interface driver.
- To activate the dimming system, a wiring harness is supplied and attached to the DIM Port (DIM IN) on the thermal shield protection system. This port allows the 0-10V Interface to bypass the thermal shield and control the driver.
- The thermal shield works in conjunction with the control system to assure that overheating will not harm the LEDs.
- The wiring harness is connected with the use of the Purple lead as the positive (+) and the Grey lead as the negative (-) to an available control signal (by others).



**Optical Module:**

- Precision, replaceable PicoEmitters are positioned to achieve directional control towards the desired task.
- The entire EmitterDeck® fastens to the housing as a one-piece module.
- Type II, III, and IV standard distributions.
- 3000K, 4000K, 5000K standard CCT. Amber and custom available.

**Mounting Plate:**

- Mounting plate attaches directly to any standard 4" junction box.
- All mounting plates are die-cast aluminum with reinforced ribs. Two studs are provided in each plate with flange nuts to allow fixture mounting by keyhole slots. Sealant must be applied (by others) between mounting plate and mounting surface to insure a dry junction box.

**Finish:**

- Fade and abrasion resistant, electrostatically applied, thermally cured, triglycidal isocyanurate (TGIC) polyester powdercoat.
- Standard colors include (BL) Black, (DB) Dark Bronze, (GT) Graphite, (LG) Light Gray, (PS) Platinum Silver, (TT) Titanium, (WH) White and (CC) Custom Color (Include RAL#).

**Certifications and Listings:**

- UL 1598 Standard for wet locations for Luminaires.
- UL 8750 Standard for Safety for Light Emitting Diode (LED) Equipment for use in Lighting Products.
- CSA C22.2#250.0 Luminaires.
- IDA approved, 3000K and warmer CCTs only.

**CAUTION:**

- Fixtures must be grounded in accordance with national, state and/or local electrical codes, Failure to do so may result in serious personal injury.

**WARRANTY:**

- For full warranty see <http://www.hubbellighting.com/resources/warranty>

Kim Lighting reserves the right to change specifications without notice.

**CONTROLS**

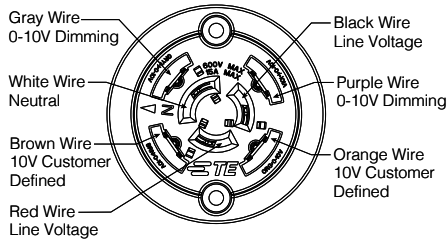
**Photocell Receptacle**

**A25-7**

Fully gasketed and wired 7-pin receptacle option. Easy access location above the electrical compartment. 7-pin construction allows for a user-defined interface and provides a controlled definition of operational performance. ANSI twist-lock control module by-others.

Standard customer operation modes:

1. Traditional on/off photoelectric control.
2. 5-pin wireless photoelectric control for added dimming feature.
3. 7-pin wireless photoelectric control for dimming and additional I/O connections for customer use.



**Wireless Control**

Hubbell Building Automation’s wiSCAPE™ In-Fixture Module is a bi-directional wireless RF device that allows an individual fixture to be managed, monitored and metered. The wiSCAPE In-Fixture Module communicates wirelessly over a robust 2.4GHz ISM (Industrial, Scientific and Medical) certified meshed radio signal. The wiSCAPE Fixture Module drastically simplifies control and automation of projects, especially in retrofit environments, and challenges the legacy world of wired-systems. wiSCAPE wireless control technology easily adapts to complex automation situations for quick, simple and economical commissioning. The On-Fixture Module is compatible with A-25-7H option.

**WIR-RML-IO**

120 - 347V 1000 Foot Range WiScape RF mesh control system with off/on/dim, motion, photo, GPS location, alert, monitoring and metering capabilities.

**Button Photocell**

**A30** for 120V, **A31** for 208V, **A32** for 240V, **A33** for 277V, **A35** for 347V, **A34** for 480V,

Photocell is factory installed inside the housing with a fully gasketed sensor on the side wall. For multiple fixture mountings, one fixture is supplied with a photocell to operate the others.

<sup>1</sup>Voltage, <sup>2</sup>Color

*Kim Lighting reserves the right to change specifications without notice.*

**OPTIONS**

**Fusing:**

**SF** for 120, 277 and 347 Line Volts  
**DF** for 208, 240 and 480 Line Volts

High temperature fuse holders factory installed inside the fixture housing. Fuse is included.

**Polycarbonate Lens**

**LS**

Clear flat polycarbonate lens replaces standard tempered glass lens. 360° pattern. Module colors available Black, Gray, and White.

**NOTE:** Use only when vandalism is anticipated to be high. Useful life is limited by UV discoloration from sunlight. A program of regular inspection and periodic replacement is highly recommended to maintain optimum fixture performance.

**Neighbor Friendly Optic**

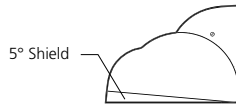
**NFO**

Integrated Neighbor Friendly Optic on each PicoEmitter module to completely control unwanted backlight. Most effective with Type III and IV distributions.

**5° Shield**

**5DS14**

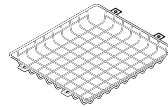
Aluminum shield field-attached to lens frame. Maintains a horizontal cutoff fixture edge when the luminaire is tilted 5°. Finished to match the fixture.



**Wire Guard**

**WG14**

11 ga. (.12" dia.) BB Wire, (.75" sq. welded mesh pattern,) 11-3/8" x 10-1/4" x 1-1/2" deep. Finish is TGIC thermoset polyester powder coat. Finished to match the fixture.



**Surface Conduit Mount**

**SCM14U** for UP fixtures only.  
**SCM14D** for DOWN fixtures only.

Cast aluminum junction box and fixture mount for attachment (by others) to existing walls, beams or columns. SCM14 has one 3/4" NPT conduit tap in each side and bottom. Must be securely mounted to wall surface. Finished to match the fixture.

**NOTE:** Must be securely mounted to all surfaces.

