



New and Existing Construction

LB4 & LBEB4

LED Downlight Module
 9W High Efficacy
 Wet Location
 120V

DATE: _____ TYPE: _____

FIRM NAME: _____

PROJECT: _____

LiteBox 4"



Aperture: Nominal 4"
 See Housing Specification Sheet for ceiling cutout requirements
 Not to Scale

APPLICATIONS:

LiteBox LED modules are designed for use in new construction as well as retrofit applications with existing Prescolite or competitive 4" housings using the included screw base adapter. Lumen output and distribution comparable to a 65W BR30 while consuming only 9 watts. ENERGY STAR® qualified. Can be used to comply with California Title 24 Commercial and IECC watts per square foot requirements. Suitable for use with continuous room side ambient temperature up to 25°C. Continuous dimming to 10% with most standard dimmers. (See Dimming Notes).

LIGHT ENGINE:

High efficacy LED light engine, available in 2700K, 3000K, 3500K and 4000K. 120VAC, 50/60Hz, with output over-voltage, over-current, and short circuit protection. System designed for optimal life and lumen maintenance (60,000 hours at 70% lumen maintenance per TM-21).

LENS/REFLECTOR:

All LiteBox LED modules are provided standard with a diffused optical grade, impact resistant polycarbonate lens for uniform illumination and superior glare

control. Reflector powder coat finish creates aesthetic ceiling appearance and visually comfortable cutoff.

INSTALLATION:

For New Construction: Use with Prescolite IBX QuickLink LED housings. QuickLink connector mates directly to housing connector without a screw base adapter for compliance to California Title 24 non-screw base socket requirement.

For Retrofit: Use in Prescolite or other compatible 4" recessed housings using supplied screw base adapter.

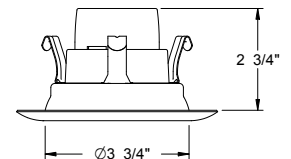
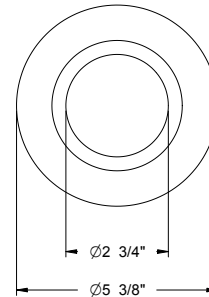
Easy installation with (3) stainless steel spring clips (pre-installed).

CERTIFICATIONS:

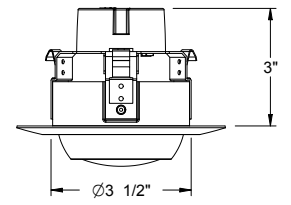
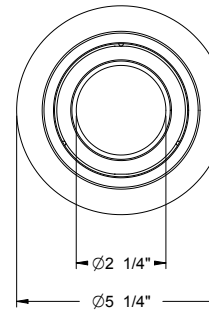
CSA Classified for use in Prescolite or other 4" recessed housings including Halo, Juno, and Lithonia. (See page 3 for more details) Suitable for wet locations. ENERGY STAR qualified. Can be used to meet California Title 24 commercial with IBXQL.

WARRANTY:

5 year warranty
 Additional information on pg 3.
 See www.prescolite.com for details.



LB4A



LBEB4A

CATALOG NUMBER: _____

EXAMPLE: LB4A6L30K9 WH

TRIM	OUTPUT	CCT	CRI	TRIM COLOR	ACCESSORIES
<input type="checkbox"/> LB4A 4" LiteBox Downlight LED Module with dimming to 10% 120V <input type="checkbox"/> LBEB4A³ 4" LiteBox Adjustable LED Module with dimming to 10% 120V	<input type="checkbox"/> 6L 600 Lumens	<input type="checkbox"/> 27K 2700 Kelvin <input type="checkbox"/> 30K 3000 Kelvin <input type="checkbox"/> 35K 3500 Kelvin <input type="checkbox"/> 40K² 4000 Kelvin	<input type="checkbox"/> 9 90+ CRI	<input type="checkbox"/> WH White	<input type="checkbox"/> LiteGear¹ Inverter, single phase central lighting, 125VA-250VA <input type="checkbox"/> LPS Series¹ LitePower micro-inverter, 20VA-55VA <input type="checkbox"/> IBX4QL-120 IC/Non-IC Airtight housing with supply wire quick connects

NOTES

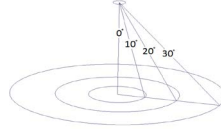
- ¹ See Central Inverter compatibility note and web links on page 3
- ² Not available with LBEB4
- ³ Damp location only

PHOTOMETRIC DATA

Litebox LED - 4" LED Downlight Module

ELECTRICAL DATA 4"

Input Voltage	120V AC
Input Frequency	50/60 Hz
Input Current	0.08A
Input Power	9.0W
Power Factor	>0.90
THD	<20%
EMI Filtering	FCC 47CFR Part 15, Class B
Operating Temperature	-30°C to 25°C
Dimming	Yes*
Over-voltage, over-current, short-circuit protected	
*See Dimming Notes for more information	



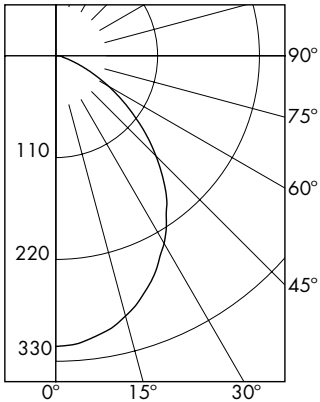
INITIAL FOOTCANDLES (fc) DATA CHART

LB4A6L30K9 WH											
Single Unit, fc on 30" Work Plane						Ceiling to Floor Height (feet)	Multiple Units, Average fc on 30" Work Plane				
0° (nadir)	10°		20°		30°		Fixture Spacing (feet)	RCR 2	RCR 5	RCR 7	
fc	fc	Illuminated Diameter (feet)	fc	Illuminated Diameter (feet)	fc	Illuminated Diameter (feet)		footcandles (fc)			
10	10	2	8	4	5	6	8	6 x 6	16	12	10
7	7	2	5	5	4	8	9	7 x 7	12	8	7
5	5	3	4	6	2	9	10.5	9 x 9	8	6	5
4	4	3	3	6	2	10	11	9 x 9	7	5	4

*Spacing to Mounting Height ratio 1.1

LB4A6L30K9 WH

LED Light Engine: 3000K 90 CRI
System Wattage: 9.0W
Fixture delivered lumens: 622
Fixture Efficacy: 69.3
Spacing Criteria: 1.1



CANDELA DISTRIBUTION	
DEG	CANDELA
0	314
5	311
15	291
25	256
35	208
45	153
55	93
65	42
75	13
85	5
90	0

ZONAL LUMEN SUMMARY

ZONE	LUMENS	%LUMINAIRE
0-30	229	36.8
0-40	359	57.8
0-60	561	90.1
0-90	622	100.0

COEFFICIENTS OF UTILIZATION

Zonal Cavity Method

Room Cavity Ratio	% Effective Ceiling Cavity Reflectance											
	80%			70%			50%			30%		
	20% Effective Floor Cavity Reflectance											
	% Wall Reflectance											
	70	50	30	10	70	10	50	30	50	30	50	30
1	111	107	103	100	108	98	100	98	97	94		
3	94	85	78	73	92	72	81	75	78	74		
5	81	69	61	56	79	55	66	60	64	59		
7	70	58	50	44	68	44	55	49	54	48		
9	61	49	41	36	60	36	47	41	46	40		

LB4A6L30K9 WH

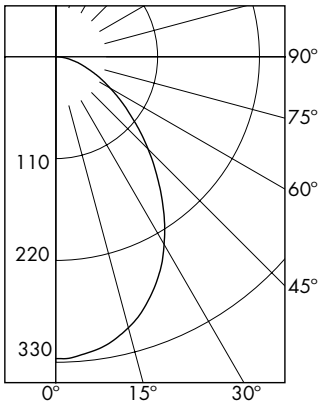
Test No. 17.00240

Test No. 17.00240

Tested at 25°C Ambient in accordance to IESNA LM-79-2008

LBEB4A6L30K9 WH

LED Light Engine: 3000K 90 CRI
System Wattage: 8.6W
Fixture delivered lumens: 637
Fixture Efficacy: 73.8
Spacing Criteria: 1.1



CANDELA DISTRIBUTION	
DEG	CANDELA
0	326
5	323
15	303
25	262
35	203
45	141
55	89
65	51
75	25
85	7
90	2

ZONAL LUMEN SUMMARY

ZONE	LUMENS	%LUMINAIRE
0-30	236	37.0
0-40	363	56.9
0-60	551	86.5
0-90	637	99.9

COEFFICIENTS OF UTILIZATION

Zonal Cavity Method

Room Cavity Ratio	% Effective Ceiling Cavity Reflectance											
	80%			70%			50%			30%		
	20% Effective Floor Cavity Reflectance											
	% Wall Reflectance											
	70	50	30	10	70	10	50	30	50	30	50	30
1	110	106	102	99	108	97	100	97	96	93		
3	94	84	77	71	91	71	80	74	77	72		
5	80	69	60	54	78	54	65	59	64	58		
7	70	57	49	43	68	43	55	48	53	47		
9	61	49	41	36	60	36	47	40	46	40		

LBEB4A6L30K9 WH

Test No. 17.00242

Test No. 17.00242

Tested at 25°C Ambient in accordance to IESNA LM-79-2008



Web: www.prescolite.com • Tech Support: (888) 777-4832
701 Millennium Boulevard • Greenville, SC 29607 U.S.A. • Phone (864) 678-1000
Copyright ©2017 Prescolite, Inc., a division of Hubbell Lighting, Inc. All Rights Reserved
Specifications subject to change without notice. • Printed in U.S.A. • LB-LED-016 • 12/4/17



HUBBELL
Lighting, Inc.

Litebox LED - 4" LED Downlight Module

Central Inverters

For full fixture output in back-up mode, we recommend you visit www.dual-lite.com for your Central Lighting Inverter options. Please contact your local Hubbell representative for any assistance with proper sizing and loading of your inverter selection. Central lighting inverters must be ordered separately.

LiteGear: www.dual-lite.com/products/litegear_lg_series

LPS Series: www.dual-lite.com/products/lps

DIMMING NOTES:

Prescolite's recessed LED modules are designed to be compatible with many dimmer controls. Electronic low-voltage rated dimmer controls may offer favorable dimming performance. Incandescent type dimmers are not recommended. The following is a list of known compatible dimmer controls:

Manufacturer	Series	Part Number	Dimmer Type
Lutron	Nova T	NTELV-300	ELV
Lutron	Spacer	SPSELV-600	ELV
Lutron	Maestro	MAELV-600	ELV
Lutron	Diva	DVELV-300P	ELV
Leviton	Decora SureSlide	6672-1LW	LED, CFL
Leviton	SureSlide	6615-P	ELV
Leviton	Renoir	AWRMG-EAW	ELV
Pass & Seymour	Harmony	DCL453PTCCCV6	LED, CFL

Incandescent Digital type dimmers are not recommended.

Dimming capabilities will vary depending on the dimmer control, load, and circuit installation. Always refer to dimmer manufacturer instructions or a controls specialist for specific requirements.

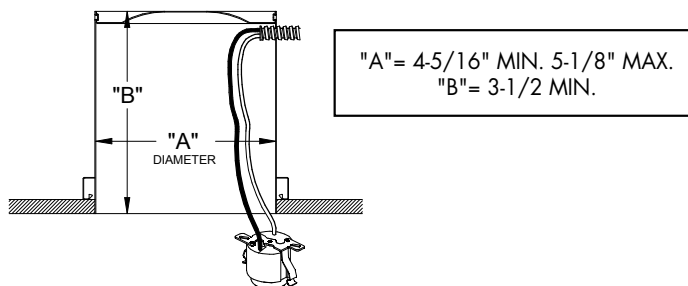
Dimmer control brand names where identified above are tradenames or registered trademarks of each respective company.

COMPATIBILITY OF 4" RECESSED HOUSINGS:

LiteBox LED modules are ETL classified for use with Prescolite and most competitive recessed cans (with "A" and "B" dimensions)

Prescolite

Capri
Commercial Electric
Elco
Emerald
Halo
Intense
Jimway



NOTES

1. Operation in ambient temperatures higher than those specified will shorten life and void warranty.
2. Warranty is limited to repair and replacement of defective parts of the LED system and does not include labor or installation. See www.prescolite.com for details.



Web: www.prescolite.com • Tech Support: (888) 777-4832
701 Millennium Boulevard • Greenville, SC 29607 U.S.A. • Phone (864) 678-1000
Copyright ©2017 Prescolite, Inc., a division of Hubbell Lighting, Inc. All Rights Reserved
Specifications subject to change without notice. • Printed in U.S.A. • LB-LED-016 • 12/4/17



HUBBELL
Lighting, Inc.