



10" High Lumen LED Cylinder MC10LED 120 or 277V 0-10V Dimming

APPLICATIONS:

Designed for interior spaces, the MC10LED Series is a 10" specification grade high output LED cylinder capable of delivering over 16,500 lumens designed for ceiling heights from 20 to 60 feet. Combining energy savings, long life, low maintenance cost & controllability, it is an excellent alternative to metal halide (up to 250 watts) and quartz (up to 500 watts) fixtures. Rated for a minimum of 50,000 hours life (70% lumen maintenance) with ambient temperatures up to 30° C.

HOUSING:

Seamless .063" thick aluminum cylinder body with durable powder coat paint finish in a variety of architectural colors including Prescolite's exclusive Zet, metallic silver.

REFLECTOR:

High purity spun aluminum reflector with iridescence suppressed Alzak anodized finish. Available in several finishes in a variety of anodized colors as well as painted trim options. 25°, 35°, 45°, and 55° optical distributions with optional lens. A wall wash (WW) option is also available.

LED LIGHT ENGINE:

The MC10LED uses up to 480 individual Nichia LEDs specifically mixed to provide a minimum of 80 CRI with 3 SCDM color consistency. The LED light engine is available in multiple lumen packages and color temperatures to accommodate any design requirement. The use of individual LEDs to achieve these lumen packages enables optimal thermal management while creating a visually pleasing diffuse appearance in the ceiling. The LED light engine

is coupled to a passive heat sink array utilizing innovative heat pipe technology, and is protected with a self resetting thermal protector.

LED DRIVER:

Each string of 120 LEDs is powered by a single 40 watt, constant current LED driver (up for 4 drivers per fixture). The driver is UL8750 and Class 2 compliant. Lutron & 1% dimming drivers also available.

DIMMING:

Standard 0-10V dimming provides flicker-free dimming to 10%. For sizing of the circuit control, the dimming circuit may require up to 1.2mA of sink current. See list of compatible dimmers on page 4.

Lutron 2-wire and EcoSystem, or 0-10V dimming available to 1%, as well as DMX with RDM (remote device management) dimming to less than 0.1%.

INSTALLATION:

Available as either a pendant, cord & cable, or ceiling mounted option. CCM option comes standard with 20ft length.

CERTIFICATIONS:

Certified to US and Canadian safety standards. Suitable for damp, interior locations.

WARRANTY:

5 Year Warranty. See www.prescolite.com for details.

DATE: _____ TYPE: _____

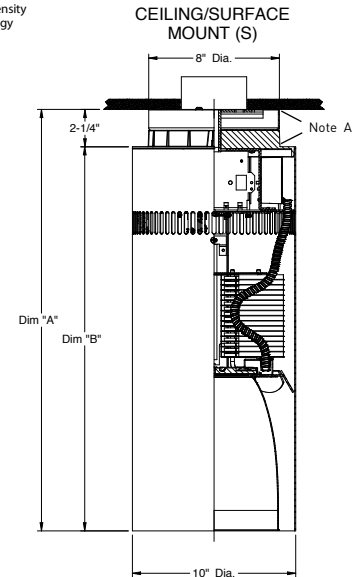
FIRM NAME: _____

PROJECT: _____

LiteForms®

Variable Intensity
Technology

For conversion to millimeters,
multiply inches by 25.4
Not to Scale



	26" HOUSING	30" HOUSING
DIM "A"	25-3/4"	29-1/8"
DIM "B"	23-1/2"	26-7/8"

Pendant and Wall Mount Line art on page 6

Note A: These areas will be painted black when Brushed Aluminum is chosen

CATALOG NUMBER:

EXAMPLE: MC10LEDP12L35K8WFL45

CYLINDER	MOUNTING	OUTPUT	LED COLOR TEMP	CRI	OPTIONS	BEAM ANGLE	REFLECTOR FINISH	REFLECTOR COLOR	OPTIONS	CYLINDER COLOR
<input type="checkbox"/> MC10LED 10" High Output LED cylinder	<input type="checkbox"/> P Pendant (18" standard) <input type="checkbox"/> S Surface <input type="checkbox"/> CCM ⁶ Cord & Cable Mount <input type="checkbox"/> W Wall Mount	<input type="checkbox"/> 4L 4000 Delivered Lumens <input type="checkbox"/> 8L 8000 Delivered Lumens <input type="checkbox"/> 12L 12000 Delivered Lumens <input type="checkbox"/> 16L 16000 Delivered Lumens	<input type="checkbox"/> 27K 2700 Kelvin <input type="checkbox"/> 30K 3000 Kelvin <input type="checkbox"/> 35K 3500 Kelvin <input type="checkbox"/> 40K 4000 Kelvin <input type="checkbox"/> 50K ⁴ 5000 Kelvin	<input type="checkbox"/> 8 80+ CRI <input type="checkbox"/> 9+ 90+ CRI	<input type="checkbox"/> Blank Standard 0-10V dimming to 10% <input type="checkbox"/> EDM Hi-Lume 1% EcoSystem LED Driver <input type="checkbox"/> 2DM Hi-Lume 1% 2-wire LED Driver (120V only) <input type="checkbox"/> DM1 0-10V dimming to 1% <input type="checkbox"/> DMX DMX with RDM dimming to <0.1% <input type="checkbox"/> LF ⁵ Variable Intensity Lighting Lumen Factor	<input type="checkbox"/> MD25 ¹ 25 Degree Cutoff <input type="checkbox"/> FL35 35 Degree Cutoff <input type="checkbox"/> WFL45 45 Degree Cutoff <input type="checkbox"/> XFL55 55 Degree Cutoff <input type="checkbox"/> WW ^{8,9} Wall Wash	<input type="checkbox"/> Blank Specular <input type="checkbox"/> SS Semi-Specular <input type="checkbox"/> V Kurt Versen Specular <input type="checkbox"/> VS Kurt Versen Softglow® <input type="checkbox"/> VSS Kurt Versen SoftSheen™	<input type="checkbox"/> Blank Clear Alzak <input type="checkbox"/> CG Champagne Gold Alzak <input type="checkbox"/> GD Gold Alzak <input type="checkbox"/> BL Black Alzak <input type="checkbox"/> WE Wheat Alzak <input type="checkbox"/> LW Light Wheat Alzak <input type="checkbox"/> PW Pewter Alzak <input type="checkbox"/> BC Painted Black Cone <input type="checkbox"/> WC Painted White Cone	<input type="checkbox"/> Blank ⁹ No Lens <input type="checkbox"/> CL ⁹ Clear Lens <input type="checkbox"/> SL ⁹ Solite Lens <input type="checkbox"/> 26 26" Housing <input type="checkbox"/> 30 30" Housing	<input type="checkbox"/> BA ² Brushed Aluminum <input type="checkbox"/> BZ Bronze <input type="checkbox"/> BL Matte Black <input type="checkbox"/> WH Matte White <input type="checkbox"/> Z Zet

¹ Requires 30" housing option

² Standard with black accents

⁴ 50K not available in 90 CRI

⁵ Lumen Factor available in 5% increments, from 75% (075) to 110% (110) on the 4L, 8L, 12L, or 16L housings. See spec sheet for more information. Not available greater than 100 for 2DM & EDM.

⁶ CCM comes with 20ft clear cord & cable and white ceiling canopy standard.

⁷ Not available in wall wash (WW)

⁸ Available with 4L and 8L only

⁹ Satin lens is standard for wall wash (WW)

PHOTOMETRIC DATA

LiteForms - 10" MC10LED Cylinder

DRIVER DATA	MC10LED4L	MC10LED8L	MC10LED12L	MC10LED16L
Input Voltage	120-277V	120-277V	120-277V	120-277V
Input Frequency	50/60 Hz	50/60 Hz	50/60 Hz	50/60 Hz
Input Current	0.33 (120v) 0.14 (277v)	0.68 (120v) 0.28 (277v)	0.98 (120v) 0.42 (277v)	1.3 (120v) 0.56 (277v)
Input Power	39W	78W	117W	156W
Constant Current Output	950mA	950mA	950mA	950mA
Power Factor	≥0.90	≥0.90	≥0.90	≥0.90
THD	<25%	<20%	<20%	<20%
EMI Filtering	FCC 47CFR Part 15, Class A	FCC 47CFR Part 15, Class A	FCC 47CFR Part 15, Class A	FCC 47CFR Part 15, Class A
Operating Temperature	-30°C to +30°C	-30°C to +30°C	-30°C to +30°C	-30°C to +30°C
Dimming	0-10V	0-10V	0-10V	0-10V
Over-voltage, over-current, short-circuit protected				
Lumen output & input wattage may vary slightly with EDM/2DM/DM1/DMX Driver options				

Lumen Multiplier Table

Photometrics for the MC10LED are published below at a nominal 3500 Kelvin temperature. This table may be used to approximate the lumen values at different Kelvin temperatures. Power consumption would stay the same.

5000 Kelvin	1.14
4000 Kelvin	1.03
3500 Kelvin	1.00
3000 Kelvin	1.00
2700 Kelvin	0.91
Solite Lens	0.87
90 CRI.....	0.80



Variable Intensity
Technology

VARIABLE INSTENSITY LIGHTING

LUMEN FACTOR (LF)

The Megalum offers the ability to deliver precisely the amount of light you need for any downlighting application - from less than 2000 lumens to nearly 17500 lumens! The standard Megalum 4L, 8L, 12L and 16L fixtures can all be tuned from 75% to 110% of their published lumen outputs. Simply select your light engine, and in the housing options select a lumen factor (LF___).

In most lighting calculation software, the "LF" can be used in the ballast factor input to adjust the calculated light levels.

Lumen Factor	075	080	085	090	095	100	105	110
Watt Factor	0.72	0.78	0.83	0.89	0.94	1	1.06	1.13

It is also important to note that the input power also changes in the same direction, but not in proportion to the lumens. The 'watt factor' corresponding to the appropriate 'lumen factor' can be used to calculate the input power.

Example:

Desired: 13000 Lumens using a WFL45 open reflector

MC10LED 12L WFL45 Open fixture provides 12095 delivered lumens and requires 117.5 input watts (chart, page 3)

Choose: LF110. 12095 lumens x 1.1 = **13304 Delivered Lumens**

Calculated Watts: The corresponding Watt Factor to LF110 = 1.13

117.5 watts x 1.13 = **132.8 input watts**



Web: www.prescolite.com • Tech Support: (888) 777-4832
 701 Millennium Boulevard • Greenville, SC 29607 U.S.A. • Phone (864) 678-1000
 Copyright ©2019 Prescolite, Inc., a division of Hubbell Lighting, Inc. All Rights Reserved
 Specifications subject to change without notice. • Printed in U.S.A. • LFOLED-014 • 3/13/19



HUBBELL
Lighting, Inc.

PHOTOMETRIC DATA

Delivered Lumens

The table below shows the delivered lumens for the various lumen outputs and beam distributions. Use this chart in connection with the lumen factor (LF) capability to deliver any output required.

Output	Beam	Lens	Delivered Lumens	Input Watts	Lumens Per Watt	Test Number	Full Catalog String
16L	XFL55	Open	16132	156.5	103.1	IES	MC10LEDS16L35K8XFL55
16L	WFL45	Open	15920	156.1	102.0	IES	MC10LEDS16L35K8WFL45
16L	FL35	Open	14833	156.4	94.8	IES	MC10LEDS16L35K8FL35
16L	MD25	Open	8008	156.1	51.3	IES	MC10LEDS16L35K8MD25
16L	XFL55	SL	14150	156.3	90.5	IES	MC10LEDS16L35K8XFL55SL
16L	WFL45	SL	13925	156.3	89.1	IES	MC10LEDS16L35K8WFL45SL
16L	FL35	SL	13077	156.2	83.7	IES	MC10LEDS16L35K8FL35SL
16L	MD25	SL	6717	156.1	43.0	IES	MC10LEDS16L35K8MD25SL
12L	XFL55	Open	12221	117.5	104	IES	MC10LEDS12L35K8XFL55
12L	WFL45	Open	12095	117.5	102.9	IES	MC10LEDS12L35K8WFL45
12L	FL35	Open	11253	117.5	95.8	IES	MC10LEDS12L35K8FL35
12L	MD25	Open	6204	117.5	52.8	IES	MC10LEDS12L35K8MD25
12L	XFL55	SL	10767	117.5	91.6	IES	MC10LEDS12L35K8XFL55SL
12L	WFL45	SL	10580	117.5	90.0	IES	MC10LEDS12L35K8WFL45SL
12L	FL35	SL	9939	117.5	84.7	IES	MC10LEDS12L35K8FL35SL
12L	MD25	SL	5194	117.5	44.2	IES	MC10LEDS12L35K8MD25SL
8L	XFL55	Open	8533	78.1	109.3	IES	MC10LEDS8L35K8XFL55
8L	WFL45	Open	8094	78.1	103.6	IES	MC10LEDS8L35K8WFL45
8L	FL35	Open	7614	78.3	97.2	IES	MC10LEDS8L35K8FL35
8L	MD25	Open	6310	78.2	80.7	IES	MC10LEDS8L35K8MD25
8L	XFL55	SL	7129	78.2	91.3	IES	MC10LEDS8L35K8XFL55SL
8L	WFL45	SL	7269	78.2	93.1	IES	MC10LEDS8L35K8WFL45SL
8L	FL35	SL	6648	78.1	85	IES	MC10LEDS8L35K8FL35SL
8L	MD25	SL	5457	78.0	69.8	IES	MC10LEDS8L35K8MD25SL
4L	XFL55	Open	4337	38.8	111.8	IES	MC10LEDS4L35K8XFL55
4L	WFL45	Open	4097	38.8	105.6	IES	MC10LEDS4L35K8WFL45
4L	FL35	Open	3881	38.9	99.8	IES	MC10LEDS4L35K8FL35
4L	MD25	Open	3327	38.8	85.7	IES	MC10LEDS4L35K8MD25
4L	XFL55	SL	3794	38.8	96.6	IES	MC10LEDS4L35K8XFL55SL
4L	WFL45	SL	3701	38.8	95.4	IES	MC10LEDS4L35K8WFL45SL
4L	FL35	SL	3411	38.8	87.9	IES	MC10LEDS4L35K8FL35SL
4L	MD25	SL	2908	38.8	74.9	IES	MC10LEDS4L35K8MD25SL



PHOTOMETRIC DATA

LiteForms - 10" MC10LED Cylinder

MC10LED16L35K8XFL55

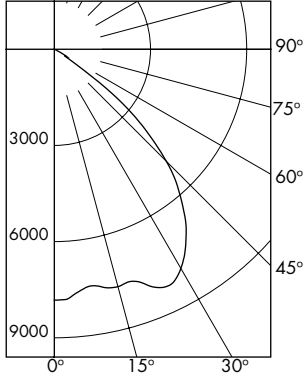
LED Light Engine: 3500K, 80+ CRI
System Wattage: 156.5W
Fixture Delivered Lumens: 16132
Fixture Efficacy: 103.1
Spacing Criteria: 1.36

ZONAL LUMEN SUMMARY

ZONE	LUMENS	%FIXT
0-40	11062	68.6
0-60	15985	99.1
0-90	16132	100.0
0-180	16132	100.0

LUMINANCE DATA IN CANDELA/SQ. METER

Angle in Vertical	Average - 0°
45°	215386
55°	48923
65°	3867
75°	2145
85°	1415



CANDELA DISTRIBUTION

DEG	CANDELA
0	7826
5	7645
15	7667
25	8181
35	7162
45	4939
55	910
65	53
75	18
85	4
90	0

COEFFICIENTS OF UTILIZATION Zonal Cavity Method

Room Cavity Ratio	% Effective Ceiling Cavity Reflectance																								
	80%					70%					50%					30%					10%				
	20% Effective Floor Cavity Reflectance																								
	% Wall Reflectance																								
	70	50	30	10	70	50	30	10	50	30	10	50	30	10	50	30	10								
1	112	109	106	103	110	107	104	102	103	100	98	99	97	95	95	94	93								
2	105	99	94	90	103	97	93	89	94	90	87	91	88	85	88	85	83								
3	98	90	84	79	96	88	83	78	86	81	77	83	79	75	81	77	74								
4	91	82	75	69	89	80	74	69	78	72	68	76	71	67	74	70	66								
5	85	74	67	62	83	73	66	61	71	65	61	70	64	60	68	63	60								
6	79	68	60	55	77	67	60	55	65	59	54	64	58	54	62	57	54								
7	74	62	55	49	72	61	54	49	60	54	49	59	53	49	57	52	48								
8	69	57	50	45	67	57	49	45	55	49	44	54	48	44	53	48	44								
9	65	53	45	41	63	52	45	40	51	45	40	50	44	40	49	44	40								
10	61	49	42	37	59	48	42	37	47	41	37	46	41	37	46	40	37								

MC10LED16L35K8XFL55

Test No. 17.02052

Test No. 17.02052

Tested at 25°C Ambient in accordance to IESNA LM-79-2008

MC10LED16L35K8WFL45

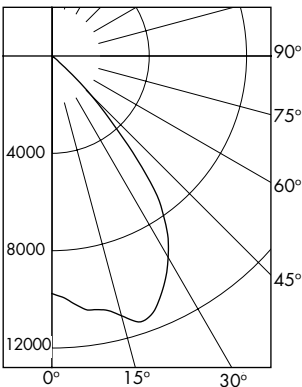
LED Light Engine: 3500K, 80+ CRI
System Wattage: 156.1W
Fixture Delivered Lumens: 15920
Fixture Efficacy: 102.0
Spacing Criteria: 1.18

ZONAL LUMEN SUMMARY

ZONE	LUMENS	%FIXT
0-40	13876	87.2
0-60	15857	99.6
0-90	15920	100.0
0-180	15920	100.0

LUMINANCE DATA IN CANDELA/SQ. METER

Angle in Vertical	Average - 0°
45°	86454
55°	5782
65°	2230
75°	1196
85°	377



CANDELA DISTRIBUTION

DEG	CANDELA
0	9759
5	10205
15	11049
25	10699
35	7988
45	2298
55	132
65	41
75	16
85	3
90	0

COEFFICIENTS OF UTILIZATION Zonal Cavity Method

Room Cavity Ratio	% Effective Ceiling Cavity Reflectance																								
	80%					70%					50%					30%					10%				
	20% Effective Floor Cavity Reflectance																								
	% Wall Reflectance																								
	70	50	30	10	70	50	30	10	50	30	10	50	30	10	50	30	10								
1	113	110	107	105	111	108	105	103	104	102	100	99	97	97	95	94	94								
2	107	101	97	93	104	100	96	92	96	93	90	93	91	88	91	88	86								
3	101	94	88	84	99	92	87	83	90	85	82	87	83	80	85	82	79								
4	95	86	80	76	93	85	80	75	83	78	74	81	77	74	79	76	73								
5	89	80	74	69	88	79	73	69	77	72	68	75	71	67	74	70	67								
6	84	74	68	63	82	73	67	63	72	66	62	70	65	62	69	65	61								
7	79	69	62	58	78	68	62	57	67	61	57	66	61	57	64	60	56								
8	75	64	58	53	73	64	57	53	62	57	53	61	56	52	60	56	52								
9	70	6	53	49	69	59	53	49	58	53	49	57	52	48	56	52	48								
10	67	56	50	45	66	56	49	45	55	49	45	54	49	45	53	48	45								

MC10LED16L35K8WFL45

Test No. 17.02051

Test No. 17.02051

Tested at 25°C Ambient in accordance to IESNA LM-79-2008



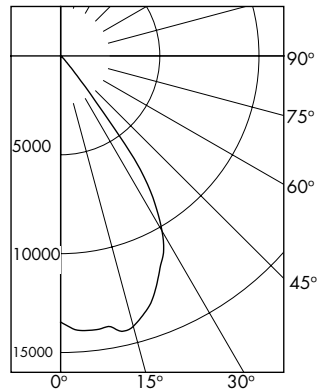
Web: www.prescolite.com • Tech Support: (888) 777-4832
701 Millennium Boulevard • Greenville, SC 29607 U.S.A. • Phone (864) 678-1000
Copyright ©2019 Prescolite, Inc., a division of Hubbell Lighting, Inc. All Rights Reserved
Specifications subject to change without notice. • Printed in U.S.A. • LFOLED-014 • 3/13/19



HUBBELL
Lighting, Inc.

PHOTOMETRIC DATA

MC10LED16L35K8FL35
LED Light Engine: 3500K, 80+ CRI
System Wattage: 156.4W
Fixture Delivered Lumens: 14833
Fixture Efficacy: 94.8
Spacing Criteria: 1.01



CANDELA DISTRIBUTION

DEG	CANDELA
0	13456
5	13940
15	14159
25	11850
35	7003
45	283
55	65
65	21
75	8
85	2
90	0

Test No. 17.02050
Tested at 25°C Ambient in accordance to IESNA LM-79-2008

ZONAL LUMEN SUMMARY		
ZONE	LUMENS	
0-40	14436	97.3
0-60	14800	99.8
0-90	14833	100.0
0-180	14833	100.0

LUMINANCE DATA IN CANDELA/ SQ. METER	
Angle in Vertical	Average - 0°
45°	12341
55°	3494
65°	1532
75°	953
85°	708

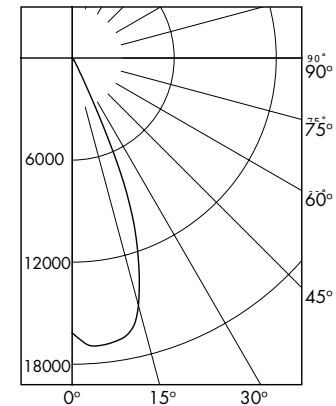
COEFFICIENTS OF UTILIZATION													Zonal Cavity Method																	
Room Cavity Ratio	% Effective Ceiling Cavity Reflectance																													
	80%						70%						50%						30%						10%					
	20% Effective Floor Cavity Reflectance																													
	% Wall Reflectance																													
	70	50	30	10	70	50	30	10	50	30	10	50	30	10	50	30	10	50	30	10										
1	114	111	108	106	111	109	106	104	105	103	101	101	100	98	98	96	95	93	91											
2	108	103	99	96	106	102	98	95	98	95	93	91	93	91	89	88	85	83	81											
3	103	96	91	88	101	95	90	87	92	89	85	82	87	84	83	80	77	75	72											
4	98	90	85	80	96	89	84	80	87	82	79	75	81	78	75	72	69	66	63											
5	93	84	79	74	91	83	78	74	82	77	73	69	76	73	70	67	64	61	58											
6	88	79	73	69	86	78	73	69	77	72	68	64	71	67	63	60	57	54	51											
7	83	74	68	64	82	74	68	64	72	67	64	61	67	63	60	57	54	51	48											
8	79	70	67	60	78	69	64	60	68	63	59	56	63	59	56	53	50	47	44											
9	75	66	60	56	74	65	60	56	64	59	56	53	60	56	53	50	47	44	41											
10	72	62	56	52	71	62	56	52	61	56	52	49	57	52	49	46	43	40	37											

MC102161535K8FLJ35

Test No. 17.020502

MC10LED16L35K8FL35
Test No. 17.02050

MC10LED16L35K8MD25
LED Light Engine: 3500K, 80+ CRI
System Wattage: 156.1W
Fixture Delivered Lumens: 8008
Fixture Efficacy: 51.3
Spacing Criteria: 0.63



CANDELA DISTRIBUTION

DEG	CANDELA
0	16158
5	16984
15	15053
25	3665
35	303
45	95
55	37
65	15
75	6
85	3
90	0

Test No. 17.02049
Tested at 25°C Ambient in accordance to IESNA LM-79-2008

ZONAL LUMEN SUMMARY		
ZONE	LUMENS	%FIXT
0-40	7871	98.3
0-60	7983	99.7
0-90	8008	100.0
0-180	8008	100.0

LUMINANCE DATA IN CANDELA/ SQ. METER	
Angle in Vertical	Average - 0°
45°	4143
55°	1989
65°	1094
75°	715
85°	1061

COEFFICIENTS OF UTILIZATION													Zonal Cavity Method												
Room Cavity Ratio	% Effective Ceiling Cavity Reflectance																								
	80%				70%				50%				30%				10%								
	20% Effective Floor Cavity Reflectance																								
	% Wall Reflectance																								
	70	50	30	10	70	50	30	10	50	30	10	50	30	10	50	30	10	50	30	10					
1	115	112	110	108	112	110	108	107	106	105	103	102	101	100	99	98	97								
2	110	106	103	100	108	105	102	99	102	99	97	99	97	95	96	94	93								
3	106	101	97	94	104	100	96	93	97	94	92	95	92	90	93	91	89								
4	102	96	92	89	101	95	91	88	93	90	87	91	89	86	90	87	85								
5	99	92	88	84	97	91	87	84	90	86	83	88	85	82	87	84	82								
6	95	88	84	80	94	88	83	80	86	82	80	85	82	79	84	81	79								
7	92	85	80	77	91	84	80	77	83	79	76	82	78	76	81	78	76								
8	89	82	77	74	88	81	77	74	80	76	73	79	76	73	78	75	73								
9	86	78	74	71	85	78	74	71	77	73	70	76	73	70	76	72	70								
10	83	76	71	68	82	75	71	68	75	71	68	74	70	68	73	70	68								

MC10ED16135K8MD25

Test No. 17.02049

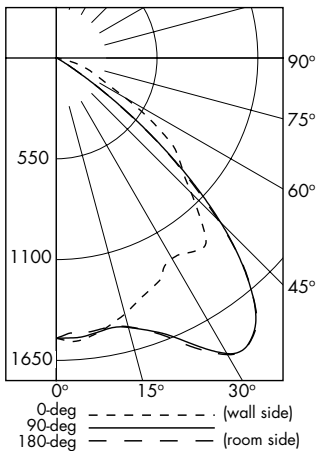
MC10LED16L35K8MD25
Test No. 17.02049



PHOTOMETRIC DATA

MC10LED6L35K8WW

LED Light Engine: 3500K, 80 CRI
System Wattage: 65.1W
Fixture Delivered Lumens: 3792
Fixture Efficacy: 58.2



CANDELA DISTRIBUTION			
DEG	0	90	180
0	1529	1529	1529
5	1545	1529	1510
15	1447	1522	1518
25	1338	1714	1736
35	1292	1861	1864
45	1043	1269	1249
55	702	284	283
65	267	17	18
75	107	7	6
85	6	2	2
90	6	4	7

Test No. 16.03007

Tested at 25°C Ambient in accordance to IESNA LM-79-2008

MULTIPLE UNITS			
1'	2'	3'	4'
UNITS ON 3' CENTER	UNITS ON 4' CENTER	UNITS ON 3' CENTER	UNITS ON 4' CENTER

3' DISTANCE FIXTURE MOUNTED OUT FROM WALLS
FOOTCANDLE DISTRIBUTION ON WALL SURFACE (Direct Only)

	1	2	3	4	5	6	7	8	9			
DISTANCE FROM CEILING IN FEET	15	12	5	1	0	18	16	18	16	9	16	
1	41	32	13	4	1	49	46	49	43	26	43	
2	41	35	24	11	3	64	64	64	48	50	48	
3	31	29	24	16	8	64	65	64	48	50	48	
4	5	19	19	18	15	10	55	54	55	40	42	40
5	13	13	13	13	12	10	45	44	45	34	33	34
6	9	9	9	9	8	8	36	37	36	28	27	28
7	7	7	7	6	6	6	30	30	30	22	23	22
8	5	5	5	5	5	4	24	24	24	18	19	18

MC10LED6L35K8WW

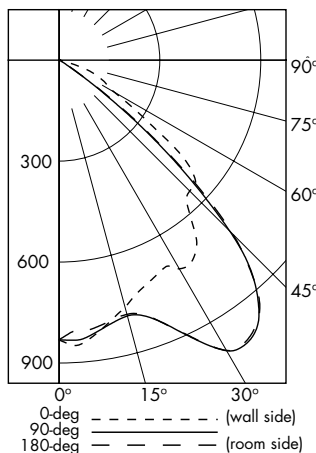
Test No. 16.03007

LUMINANCE DATA IN CANDELA/SQ. METER

Angle in Vertical	0 DEG	90 DEG	180 DEG
45°	45468	55320	54448
55°	37727	15263	15209
65°	19475	1240	1313
75°	12744	834	715
85°	2122	707	707

MC10LED3L35K8WW

LED Light Engine: 3500K, 80 CRI
System Wattage: 32.6W
Fixture Delivered Lumens: 2009
Fixture Efficacy: 61.6



CANDELA DISTRIBUTION			
DEG	0	90	180
0	831	831	831
5	843	831	810
15	760	787	782
25	699	902	900
35	705	1003	996
45	550	718	732
55	334	110	119
65	147	8	9
75	36	3	3
85	3	1	1
90	4	1	3

Test No. 16.03008

Tested at 25°C Ambient in accordance to IESNA LM-79-2008

MULTIPLE UNITS			
1'	2'	3'	4'
UNITS ON 3' CENTER	UNITS ON 4' CENTER	UNITS ON 3' CENTER	UNITS ON 4' CENTER

3' DISTANCE FIXTURE MOUNTED OUT FROM WALLS
FOOTCANDLE DISTRIBUTION ON WALL SURFACE (Direct Only)

DISTANCE FROM CEILING IN FEET											
1	8	6	2	1	0	9	7	9	8	4	8
2	19	14	6	2	1	23	21	23	20	12	20
3	22	20	14	5	1	32	36	32	24	28	24
4	16	15	12	8	4	34	31	34	24	25	24
5	11	11	10	8	5	29	29	29	22	22	22
6	7	7	7	6	5	24	24	24	18	18	18
7	5	5	5	5	4	20	19	20	15	15	15
8	3	3	3	3	3	16	16	16	12	12	12
9	3	3	2	2	2	13	13	13	10	10	10

MC10LED3L35K8WW

Test No. 16.03008

LUMINANCE DATA IN CANDELA/SQ. METER

Angle in Vertical	0 DEG	90 DEG	180 DEG
45°	23976	31300	31910
55°	17950	5912	6395
65°	10722	584	656
75°	4288	357	357
85°	1061	354	354



Web: www.prescolite.com • Tech Support: (888) 777-4832
701 Millennium Boulevard • Greenville, SC 29607 U.S.A. • Phone (864) 678-1000
Copyright ©2019 Prescolite, Inc., a division of Hubbell Lighting, Inc. All Rights Reserved
Specifications subject to change without notice. • Printed in U.S.A. • LFOLED-014 • 3/13/19



PHOTOMETRIC DATA

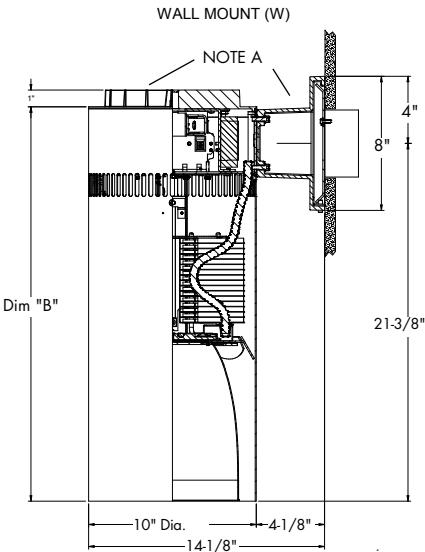
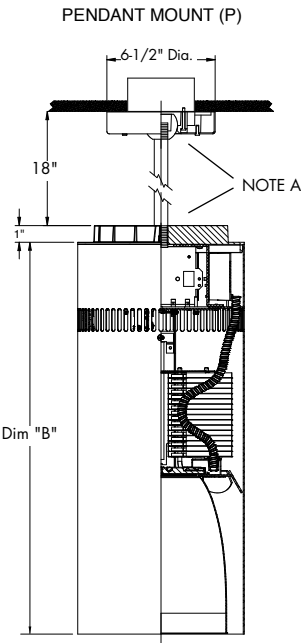
Dimming Compatibility Table

Dimming Ballast	Manufacturer	Web Link
DM/DM1	Lutron DDTV	http://bit.ly/11jSvZg
DM/DM1	Leviton AWRMG-7xx, AWSMG-7xx, AWSMT-7xx	http://bit.ly/1Bln2R9
EDM	Lutron	http://bit.ly/1vtjHA1
2DM	Lutron	http://bit.ly/1S4WjXK

DMX

See instruction sheet on www.prescolite.com for connection & installation information.

Other useful links: <http://www.eldoled.com/led-drivers/powerdrive/50-watt/ac-561s/>



Note A: These areas will be painted black when Brushed Aluminum is chosen