

6" Vertical Triple Tube Wall Wash Downlight

LF6CFV

One 26W, 32W or 42W Triple Tube Compact Fluorescent 4-pin Lamp
120V-277V

APPLICATIONS:

The LF6CFV offers a vertically lamped compact fluorescent wall wash downlight fixture. The multi-watt, multi-volt ballast provides the ability to change wattages by simply changing the lamp. This luminaire is ideal for a wide variety of low to medium height ceiling applications including commercial, retail, hospitality, and design build.

HOUSING:

One-piece 22-gauge galvanized steel platform. Prewired J-box with snap-on cover for easy access. Same housing accommodates downlight, wall wash downlight, and lensed downlight reflectors.

REFLECTOR:

High purity aluminum, Alzak, iridescence suppressed, semi-diffuse reflector. Self-trim standard. Painted white self-trim (WT) available as option.

BALLAST:

One (1) compact fluorescent Class 'P' electronic multi-volt (120V through 277V) HPF ballast suitable for operating all 26W, 32W, and 42W triple tube lamps. All ballast options are equipped with EOL protection. Accessible from below ceiling. Contact technical support for 347V.

LAMP:

Use one (1) 26W (GX24q-3 base), 32W (GX24q-3 base), or 42W (GX24q-4 base) 4-pin triple tube compact fluorescent lamp. Lamp furnished by others or as option below.

SOCKET:

One (1) injection molded socket suitable for 26W, 32W, and 42W triple tube lamps (vented). Adjusts to two positions, upper position for 42W and lower position for 26W/32W, accommodating various lamp sizes and ensuring proper lamp position.

INSTALLATION:

Universal adjustable mounting brackets accept 1/2" EMT conduit or 1 1/2" or 3/4" lathing channel (by others) or Prescolite 24" bar hangers (B24 or B6). Light commercial bar hangers included.

LABELS:

UL listed or UL/CSA listed with CDN option for damp locations. Approved for through wiring (4 in, 4 out). Non-IC type.

LAMP INCLUDED OPTION:

Specify lamp type T (Triple 4-pin) and temperature as shown below.

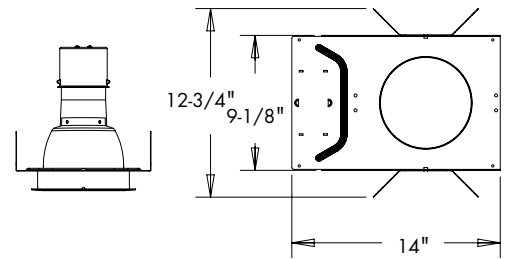
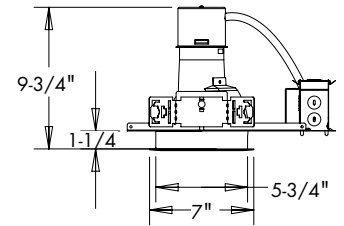
DATE: _____ TYPE: _____

FIRM NAME: _____

PROJECT: _____



Ceiling Cutout: 6-1/4"
Maximum Ceiling Thickness: 1-1/4"
For conversion to millimeters, multiply inches by 25.4
Not to Scale



Order housing, reflector and accessories separately.

CATALOG NUMBER:

EXAMPLE: LF6CFV32EB 6CFVWW LP32T30K

HOUSING WATTAGE BALLAST TYPE VOLTAGE HOUSING OPTIONS REFLECTOR REFLECTOR COLOR WALL WASH TRIM OPTIONS ACCESSORIES

<p><input type="checkbox"/> LF6CFV <input type="checkbox"/> 32 <input type="checkbox"/> EB <input type="checkbox"/> Blank 26/32/42W Electronic 120V-277V Triple Tube</p> <p><input type="checkbox"/> CDN Canadian electrical code compliant ballast disconnect</p> <p><input type="checkbox"/> CDN 347V⁴ Canadian electrical code compliant ballast disconnect</p>	<p><input type="checkbox"/> CP² Chicago Plenum CP fixture height is 11 7/8"</p> <p><input type="checkbox"/> FSDFA Fuse kit installed at factory</p> <p><input type="checkbox"/> RIF1^{1,2} Radio interference filter (single circuit)</p> <p><input type="checkbox"/> EMR1,2 Emergency battery pack with remote test switch and indicator light</p> <p><input type="checkbox"/> DM Electronic Analog Dimming Ballast to 3%, 4-wire, 0-10V (120-277V)</p> <p><input type="checkbox"/> MW26 Max Wattage label, 26W</p> <p><input type="checkbox"/> MW32 Max Wattage label, 32W</p> <p><input type="checkbox"/> SYL³ Osram Sylvania Ballast (available only for standard EB option)</p> <p><input type="checkbox"/> ECDM⁵ Lutron EcoSystem or 3-wire line voltage dimming ballast (120-277V). Dims to 5%.</p>	<p><input type="checkbox"/> 7DM Advance Mark 7TM Dimming Ballast to 5%, 4-wire, 0-10V, analog (120V thru 277V)</p> <p><input type="checkbox"/> XDM Advance Mark 10TM Dimming Ballast to 5%, 2-wire line voltage (specify voltage)</p> <p><input type="checkbox"/> HDM⁶ Lutron Hi-Lume[®] Dimming Ballast to 1%, 3-wire line voltage (specify voltage)</p> <p><input type="checkbox"/> 2DM^{6,7} Lutron Tu-Wire Dimming Ballast to 5, 2-wire, line voltage (120V only)</p> <p><input type="checkbox"/> SMT Philips Advance SmartMate[®] ballast</p>	<p><input type="checkbox"/> 6CFV 6" Alzak Semi-Diffuse</p> <p><input type="checkbox"/> Blank Clear Alzak</p> <p><input type="checkbox"/> CG Champagne Gold Alzak</p> <p><input type="checkbox"/> PW Pewter Alzak</p> <p><input type="checkbox"/> WE Wheat Alzak</p> <p><input type="checkbox"/> LW Light Wheat Alzak</p>	<p><input type="checkbox"/> WW Wall Wash</p> <p><input type="checkbox"/> TRG Trim ring gasket (factory installed)</p> <p><input type="checkbox"/> WT White flange (Alzak only)</p>	<p><input type="checkbox"/> B24 Set of (2) 24" bar hangers for T-bar ceilings</p> <p><input type="checkbox"/> B6 Set of (2) bar hangers for ceiling joists up to 24" centers</p> <p><input type="checkbox"/> FSDFI Fuse kit for field installation</p>
LAMP ACCESSORIES					
<p><input type="checkbox"/> LP -wattage=26, 32, 42 -type= T (Triple 4-pin) -temp= 27K, 30K, 35K, 41K (Kelvin) *Example: LP32T30K</p>					

¹RIF1 and EMR options not offered in combination
²CP not offered in combination with RIF1 or EMR
³Available for Osram Sylvania Quick 60+[®] Limited Warranty when used with Osram lamp(s). See www.prescolite.com for details.
⁴Dimming option not available for 347V.
⁵For 42W specify LF6CFV42EBECDDM
⁶Not available for 42W
⁷For 26W specify LF6CFV26EB2DM, 32W specify LF6CFV32EB2DM

PHOTOMETRIC DATA

LiteFrame® - 6" Vertical Triple Tube Wall Wash Downlight - LF6CFV

BALLAST DATA CFLH1/CFLV

	26W Triple			32W Triple			42W Triple		
	120V	277V	347V	120V	277V	347V	120V	277V	347V
Total System Watts	29	29	31	36	36	36	46	46	50
Input Current (Amps)	0.24	0.11	0.09	0.31	0.13	0.11	0.38	0.17	0.15
Input Frequency in Hz	50/60	50/60	50/60	50/60	50/60	50/60	50/60	50/60	50/60
Power Factor <.98	<.98	<.95		<.98	<.98	<.95	<.98	<.98	<.95
Ballast Factor <1.1	<1.1	<1.02		<.98	<.98	<.98	<.98	<.98	<1.0
Total Harmonic Distortion	<10%	<10%	<10%	<10%	<10%	<10%	<10%	<10%	<10%

LAMP DATA CFLH1/CFLV

Rated Watts	26W Triple	32W Triple	42W Triple
Rated Lumens	1710	2200	3200
Efficacy (LPW)	66	69	76
Rated Life	12,000	12,000	12,000
CRI	82	82	82
Min. Starting Temp.	32°F	32°F	32°F

LUMINANCE DATA IN CANDELA/SQ. METER

Angle in Vertical	Average 0°	Average 45°	Average 90°
45°	30969	28353	23881
55°	26840	23927	9883
65°	23720	21037	3530
75°	19135	18443	2767
85°	0	0	0

AVERAGE INITIAL FOOTCANDLES

Multiple Units (Square Array)
Ceiling 80% Wall 50% Floor 20%

Assumptions:

- Multiple Units (Square Array)
- Ceiling 80% Wall 50% Floor 20%
- 4 Fixtures evenly spaced in the center of the room.
- The room is square and has a width and length equal to twice the lamp spacing.
- The lumen depreciation factor is 0.8.
- The dirt depreciation factor is 0.98.

42W Triple

SPACING	RCR1	RCR3	RCR7
7.0	24	19	14
8.0	18	15	11
9.0	14	12	8
10.0	12	9	7
11.0	10	8	6
12.0	8	7	5
13.0	7	6	4
14.0	6	5	3
15.0	5	4	3

LF6CFV32EB/6CFVWW with Clear Alzak Wall Wash Reflector

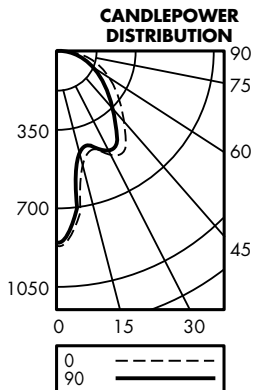
Lamp: 1-F42TBX/835/A4P-GE

Spacing Criteria: 0.7

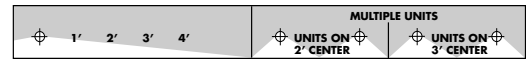
Efficiency: 43.9%

CANDLEPOWER SUMMARY

Angle	0°	45°	90°
0	831	831	831
5	804	791	784
10	693	744	668
15	550	646	525
20	472	546	444
25	471	490	442
30	502	462	479
35	482	408	472
40	423	301	403
45	367	208	336
50	304	143	273
55	258	84	230
60	214	46	192
65	168	30	149
70	125	21	113
75	83	16	80
80	0	0	0
85	0	0	0
90	0	0	0



Test No. 541



2' DISTANCE FIXTURE MOUNTED OUT FROM WALLS
FOOTCANDLE DISTRIBUTION ON WALL SURFACE

DISTANCE FROM CEILING IN FEET	1' 2' 3' 4'				UNITS ON 2' CENTER			UNITS ON 3' CENTER		
	1	29.8	18.6	2.7	1.6	35.4	25.6	35.4	32.1	32.1
2	31.8	21.9	5.5	2.6	46.8	48.0	46.8	36.6	36.5	36.6
3	22.2	17.5	7.6	3.5	46.0	51.2	46.0	31.0	30.7	31.0
4	12.7	11.2	7.0	3.8	37.3	40.6	37.3	23.4	23.1	23.4
5	6.2	6.6	5.1	3.7	27.3	31.2	27.3	17.0	16.6	17.0
6	4.2	4.4	3.6	2.9	21.4	23.6	21.4	13.5	13.2	13.5
7	3.0	3.1	2.6	2.1	17.0	18.1	17.0	10.6	10.3	10.6
8	2.3	2.4	2.0	1.6	13.7	13.7	13.7	8.6	8.4	8.6



3' DISTANCE FIXTURE MOUNTED OUT FROM WALLS
FOOTCANDLE DISTRIBUTION ON WALL SURFACE

DISTANCE FROM CEILING IN FEET	1' 2' 3' 4'				UNITS ON 3' CENTER			UNITS ON 4' CENTER		
	1	9.9	8.4	3.1	0.9	11.5	11.5	11.5	10.7	10.7
2	14.8	13.2	4.9	1.1	17.8	17.7	17.8	16.4	16.3	16.4
3	14.5	12.9	6.9	2.1	20.3	20.0	20.3	17.3	17.2	17.3
4	11.4	10.6	6.6	3.0	20.5	20.1	20.5	16.0	15.8	16.0
5	7.8	8.0	6.0	3.4	18.2	17.8	18.2	13.7	13.5	13.7
6	5.1	5.4	4.6	3.2	15.4	15.0	15.4	11.3	11.1	11.3
7	3.4	3.7	3.4	2.7	12.8	12.6	12.8	9.6	9.4	9.6
8	2.5	2.7	2.5	2.1	10.5	10.1	10.5	8.1	7.9	8.1

For approximate calculations for gold reflector use a .9 multiplier.
Actual data available upon request.

Test no. 541

COEFFICIENTS OF UTILIZATION Zonal Cavity Method

Room Cavity Ratio	% Effective Ceiling Cavity Reflectance																	
	80%			70%			50%			30%			10%			0%		
	% Effective Floor Cavity Reflectance																	
% Wall Reflectance													0					
70	50	30	10	70	50	30	10	50	30	10	50	30	10	50	30	10	0	
0	.52	.52	.52	.52	.51	.51	.51	.51	.49	.49	.49	.47	.47	.47	.45	.45	.45	.44
1	.49	.47	.46	.45	.48	.46	.45	.44	.45	.43	.42	.43	.42	.41	.41	.41	.40	.39
2	.45	.43	.40	.38	.44	.42	.40	.38	.40	.38	.37	.39	.37	.36	.38	.36	.35	.34
3	.42	.38	.35	.33	.41	.38	.35	.33	.36	.34	.32	.35	.33	.32	.34	.33	.31	.30
4	.39	.35	.31	.29	.38	.34	.31	.29	.33	.31	.28	.32	.30	.28	.31	.29	.28	.27
5	.36	.32	.28	.26	.36	.31	.28	.26	.30	.27	.25	.29	.27	.25	.29	.27	.25	.24
6	.34	.29	.25	.23	.33	.28	.25	.23	.28	.25	.23	.27	.25	.23	.26	.24	.22	.22
7	.32	.27	.23	.21	.31	.26	.23	.21	.26	.23	.21	.25	.22	.20	.24	.22	.20	.20
8	.30	.24	.21	.19	.29	.24	.21	.19	.24	.21	.19	.23	.20	.19	.23	.20	.18	.18
9	.28	.23	.19	.17	.27	.22	.19	.17	.22	.19	.17	.21	.19	.17	.21	.19	.17	.16
10	.26	.21	.18	.16	.26	.21	.18	.16	.20	.18	.16	.20	.17	.16	.20	.17	.16	.15

LF6CFV32EB/6CFVWW

Test No. 541

NOTES

Refer to www.prescolite.com for additional photometric tests (IES Files).



Web: www.prescolite.com • Tech Support: (888) 777-4832

701 Millennium Blvd. Greenville, SC 29607 U.S.A. • Phone (864) 678-1000

Copyright ©2015 Prescolite, Inc., a division of Hubbell Lighting, Inc. All Rights Reserved

Specifications subject to change without notice. • Printed in U.S.A. • LFR-CLF-018 • 4/13/15



HUBBELL
Lighting, Inc.