

8" Vertical Triple Tube Open Downlight **LF8CFV**

One 26W, 32W or 42W Triple Tube
Compact Fluorescent
4-pin Lamp
120V-277V

APPLICATIONS:

The LF8CFV offers a vertically lamped compact fluorescent open downlight fixture. The multi-watt, multi-volt ballast provides the ability to change wattages by simply changing the lamp. This luminaire is ideal for a wide variety of medium to high ceiling applications including commercial, retail, hospitality and design-build.

HOUSING:

One-piece 22-gauge galvanized steel platform. Prewired J-box with snap-on cover for easy access. Same housing accommodates downlight, wall wash downlight, and lensed downlight reflectors.

REFLECTOR:

High purity aluminum, Alzak, iridescence suppressed, semi-diffuse reflector. Self-trim standard. Painted white self-trim (WT) available as option. Baffled units standard with white painted self-trim.

BALLAST:

One (1) compact fluorescent Class 'P' electronic multi-volt (120V through 277V) HPF ballast suitable for operating all 26W, 32W, and 42W triple tube lamps. All ballast options are equipped with EOL protection. Accessible from below ceiling. Contact technical support for 347V.

LAMP:

One (1) 26W (GX24q-3 base), 32W (GX24q-3 base), or 42W (GX24q-4 base) 4-pin triple tube compact fluorescent lamp. Lamp furnished by others or as option below. Use only GE or OSRAM Sylvania lamps.

SOCKET:

One (1) injection molded socket suitable for 26W, 32W, and 42W triple tube lamps (vented).

INSTALLATION:

Universal adjustable mounting brackets accept 1/2" EMT conduit or 1 1/2" or 3/4" lathing channel (by others) or Prescolite 24" bar hangers (B24 or B6). Light commercial bar hangers included.

LABELS:

UL listed or UL/CSA listed with CDN option for damp locations. Approved for through wiring (4 in, 4 out). Non-IC type.

LAMP INCLUDED OPTION:

Specify lamp type T (Triple 4-pin) and temperature as shown below.

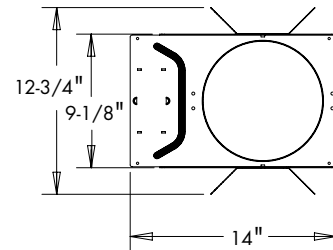
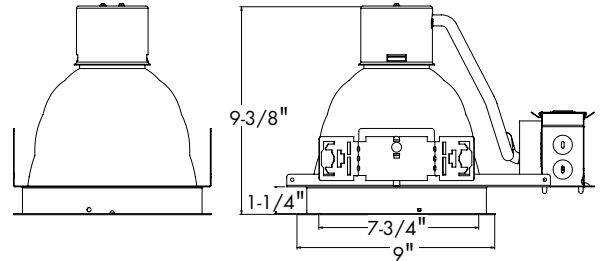
DATE: _____ TYPE: _____

FIRM NAME: _____

PROJECT: _____



Ceiling Cutout: 8-1/4"
Maximum Ceiling Thickness: 1-1/4"
For conversion to millimeters,
multiply inches by 25.4
Not to Scale



Order housing, reflector and accessories separately.

CATALOG NUMBER:

EXAMPLE: LF8CFV32EB 8CFV LP32T30K

HOUSING	WATTAGE	HOUSING OPTIONS	HOUSING OPTIONS	REFLECTOR	REFLECTOR COLOR	TRIM OPTIONS	ACCESSORIES
<input type="checkbox"/> LF8CFV	<input type="checkbox"/> 32 26/32/42W Triple Tube	<input type="checkbox"/> CP² Chicago Plenum CP fixture height is 12"	<input type="checkbox"/> XDM Advance Mark 10™ Dimming Ballast to 5%, 4-wire line voltage, (specify voltage)	<input type="checkbox"/> 8CFV 8" Alzak Semi-Diffuse	<input type="checkbox"/> BLANK Clear Alzak	<input type="checkbox"/> TRG Trim ring gasket (factory installed)	<input type="checkbox"/> B24 Set of (2) 24" bar hangers for T-bar ceilings
	<u>BALLAST TYPE</u>	<input type="checkbox"/> FSDFA Fuse kit installed at factory	<input type="checkbox"/> 7DM Advance Mark 70™ Dimming Ballast to 5%, 4-wire, 0-10V	<input type="checkbox"/> CG Champagne Gold Alzak	<input type="checkbox"/> WT White Flange (Alzak only)	<input type="checkbox"/> B6 Set of (2) bar hangers for ceiling joists up to 24" centers	<input type="checkbox"/> B6 Set of (2) bar hangers for ceiling joists up to 24" centers
	<u>VOLTAGE</u>	<input type="checkbox"/> RIF1^{1,2} Radio interference filter (single circuit)	<input type="checkbox"/> 2DM^{4,8} Lutron Tu-Wire® Dimming Ballast to 5%, 2-wire line voltage (120V only)	<input type="checkbox"/> PW Pewter Alzak	<input type="checkbox"/> LW Light Wheat Alzak	<input type="checkbox"/> FSDFI Fuse kit for field installation	<input type="checkbox"/> FSDFI Fuse kit for field installation
	<input type="checkbox"/> Blank 120V-277V	<input type="checkbox"/> EMR^{1,2} Emergency battery pack with remote test switch and indicator light	<input type="checkbox"/> MW26 Max Wattage label, 26W	<input type="checkbox"/> WE Wheat Alzak	<input type="checkbox"/> BB Black Baffle (with clear Alzak upper reflector)	<input type="checkbox"/> LW Light Wheat Alzak	<input type="checkbox"/> SCA8_ Sloped ceiling adapter (see note on back page)
	<input type="checkbox"/> CDN Canadian electrical code compliant ballast disconnect	<input type="checkbox"/> DM Electronic Analog Dimming Ballast to 3%, 4-wire, 0-10V (120-277V)	<input type="checkbox"/> MW32 Max Wattage label, 32W	<input type="checkbox"/> LW Light Wheat Alzak	<input type="checkbox"/> WB White Baffle (with clear Alzak upper reflector)		<u>LAMP ACCESSORIES</u>
	<input type="checkbox"/> CDN 347V⁶ Canadian electrical code compliant ballast disconnect	<input type="checkbox"/> HDM⁴ Lutron Hi-Lume Dimming Ballast to 1%, 3-wire (specify voltage)	<input type="checkbox"/> EM^{1,2} Emergency Battery Pack with Integral test switch and indicator light.				<input type="checkbox"/> LP -wattage= 26, 32, 42 -type= T (Triple 4-pin) -temp= 27K, 30K, 35K, 41K (Kelvin) *Example: LP32T30K
		<input type="checkbox"/> ECDM⁷ Lutron EcoSystem or 3-wire line voltage dimming ballast (120- 277V). Dims to 5%.	<input type="checkbox"/> SYL³ Osram Sylvania Ballast				
			<input type="checkbox"/> SMT Philips Advance SmartMate® ballast				

¹RIF1, EMR, and EM options not offered in combination

²CP not offered in combination with RIF1, EMR, or EM

³Available for Osram Sylvania Quick 60+® Limited

Warranty when used with Osram lamp(s). See

www.prescolite.com for details.

⁴Not available for 42W

⁵Not available for 32W & 42W

⁶Dimming option not available for 347V.

⁷For 42W specify LF8CFV42EBECDM

⁸For 26W specify LF8CFV26EB2DM, 32W specify LF8CFV32EB2DM



A Division of Hubbell Lighting, Inc.

In a continuing effort to offer the best product possible we reserve the right to change, without notice, specifications or materials that in our opinion will not alter the function of the product.

Web: www.prescolite.com • Tech Support: (888) 777-4832

LF8-CFL-019

PHOTOMETRIC DATA

LiteFrame® - 8" Vertical Triple Tube Open Downlight - LF8CFV

BALLAST DATA

	26W Triple			32W Triple			42W Triple		
	120V	277V	347V	120V	277V	347V	120V	277V	347V
Total System Watts	29	29	31	36	36	36	46	46	50
Input Current (Amps)	0.24	0.11	0.09	0.31	0.13	0.11	0.38	0.17	0.15
Input Frequency in Hz	50/60	50/60	50/60	50/60	50/60	50/60	50/60	50/60	50/60
Power Factor	<.98	<.98	<.95	<.98	<.98	<.95	<.98	<.98	<.95
Ballast Factor	<1.1	<1.1	<1.02	<.98	<.98	<.98	<.98	<.98	<1.0
Total Harmonic Distortion	<10%	<10%	<10%	<10%	<10%	<10%	<10%	<10%	<10%

LAMP DATA

Rated Watts	26W Triple	32W Triple	42W Triple
Rated Lumens	1710	2400	3200
Efficacy (LPW)	66	75	76
Rated Life	12,000	12,000	12,000
CRI	82	82	82
Min. Starting Temp.	32°F	32°F	32°F

LUMINANCE DATA IN CANDELA/SQ. METER

Angle in Vertical	Average
45°	20810
55°	15977
65°	8860
75°	381
85°	377

Test No. 2341

AVERAGE INITIAL FOOTCANDLES ON WORKPLANE

Assumptions:

1. Ceiling 80% Wall 50% Floor 20%
2. 4 luminaires evenly spaced in the center of the room.
3. The room is square and has a width and length equal to twice the lamp spacing (LS).
4. RCR is Room Cavity Ratio.
5. Dirt and Lumen Depreciation Factors are 1.0.
6. Ballast Factor is 1.0 for ballasted fixtures.

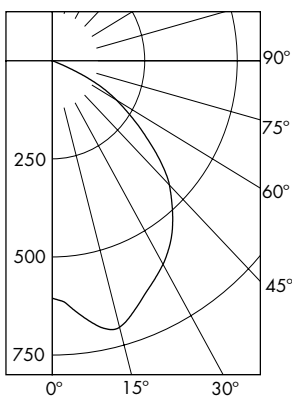
LS (Feet)	(Footcandles)		
	RCR1	RCR3	RCR7
7.0	35	28	19
8.0	27	21	14
9.0	21	17	11
10.0	17	14	9
11.0	14	11	8
12.0	12	10	6
13.0	10	8	5
14.0	9	7	5
15.0	8	6	4

Test No. 2341

LF8CFV32EB/8CFV with Clear Alzak Reflector

Lamp: 1-PL-T/32W/830-PHILIPS
Spacing Criteria: 1.4
Efficiency = 66.8%

CANDLEPOWER DISTRIBUTION



Test No. 2341

CANDLEPOWER SUMMARY

Angle	0°
0	605
5	635
10	684
15	703
20	668
25	631
30	599
35	559
40	506
45	448
50	367
55	279
60	201
65	114
70	13
75	3
80	2
85	1
90	0

COEFFICIENTS OF UTILIZATION Zonal Cavity Method

Room Cavity Ratio	% Effective Ceiling Cavity Reflectance																
	80%		70%		50%		30%		10%								
	70	50	30	10	70	50	30	10	50	30	10						
1	.74	.72	.70	.68	.73	.70	.68	.67	.68	.66	.64	.65	.64	.62	.63	.62	.61
2	.69	.64	.60	.57	.67	.63	.60	.57	.61	.58	.55	.59	.56	.54	.57	.55	.53
3	.63	.57	.53	.49	.62	.56	.52	.49	.54	.51	.48	.53	.50	.47	.51	.48	.46
4	.58	.51	.46	.42	.57	.51	.46	.42	.49	.45	.42	.48	.44	.41	.46	.43	.41
5	.54	.46	.41	.37	.53	.46	.41	.37	.44	.40	.36	.43	.39	.36	.42	.38	.36
6	.50	.42	.37	.33	.49	.41	.36	.33	.40	.36	.32	.39	.35	.32	.38	.35	.32
7	.47	.38	.33	.29	.45	.38	.33	.29	.37	.32	.29	.36	.32	.29	.35	.31	.28
8	.43	.35	.30	.26	.42	.35	.29	.26	.34	.29	.26	.33	.29	.26	.32	.28	.26
9	.41	.32	.27	.23	.40	.32	.27	.23	.31	.26	.23	.30	.26	.23	.30	.26	.23
10	.38	.30	.25	.21	.37	.29	.25	.21	.29	.24	.21	.28	.24	.21	.28	.24	.21

LF8CFV32EB/8CFV

Test No. 2341

NOTES

Refer to www.prescolite.com for additional photometric tests (IES Files).
When ordering a sloped ceiling adapter, specify the degree of slope in 5° increments, max. of 35°. For a more precise degree or wet ceiling applications, please contact factory. Sloped ceiling adapter and housing must be installed at the same time prior to finish ceiling installation.



Web: www.prescolite.com • Tech Support: (888) 777-4832
701 Millennium Blvd. Greenville, SC 29607 U.S.A. • Phone (864) 678-1000
Copyright ©2015 Prescolite, Inc., a division of Hubbell Lighting, Inc. All Rights Reserved
Specifications subject to change without notice. • Printed in U.S.A. • LFR-CFL-019 • 4/13/15

