

8" Incandescent Open Downlight **LF8INC**

One 150W A21, A23,
250W PAR38,
or 100W A19
150W BR40, 85W BR30,
75W PAR30L Lamp

DATE: _____ TYPE: _____

FIRM NAME: _____

PROJECT: _____

LiteFrame

Ceiling Cutout: 8¹/₄"
Maximum Ceiling Thickness: 1¹/₄"
For conversion to millimeters,
multiply inches by 25.4
Not to Scale

APPLICATIONS:

The LF8INC provides an 8" incandescent open downlight fixture. This luminaire is ideal for a wide variety of applications including commercial, retail, hospitality, and design-build.

HOUSING:

One piece 22-gauge galvanized steel platform with friction retaining springs to secure optical system. Maximum 1¹/₄" ceiling thickness. Prewired J-Box with snap-on cover for easy below ceiling access.

REFLECTOR:

High purity aluminum Alzak iridescence surpressed semi-diffuse reflector. Self-trim standard. Painted, white self trim (WT) available as option. Baffled units standard with painted white self trim.

LAMP:

One (1) 150W A21, A23; 250W PAR38*; 100W A19; 150W BR40; 85W BR30; or 75W PAR30L lamp. Lamp furnished by others.

SOCKET:

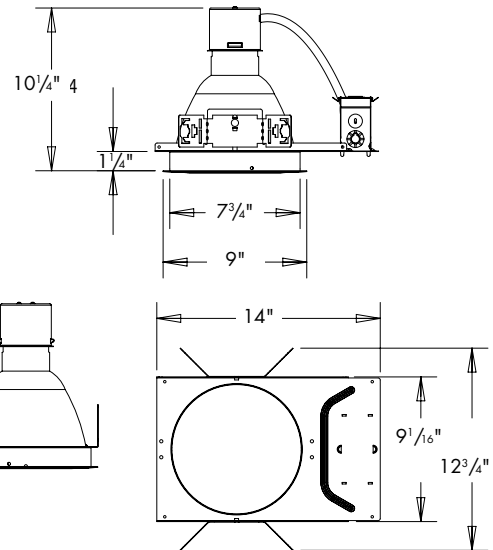
One (1) medium base porcelain socket with nickel plated screw shell. Socket adjusts to two positions to maintain proper lamp position when using A23 or PAR38 lamps.

INSTALLATION:

Universal adjustable mounting brackets accept 1/2" EMT conduit or 1 1/2" or 3/4" lathing channel (by others) or Prescolite 24" bar hangers (B24 or B6). Light commercial bar hangers included.

LABELS:

UL, CSA listed for damp locations
Approved for through wiring (4 in, 4 out)
Thermally protected. Non-IC rated.



Order housing, reflector and accessories separately.

CATALOG NUMBER:

EXAMPLE: LF8INC-8V

HOUSING	HOUSING OPTIONS	REFLECTORS	REFLECTOR COLOR	OPTIONS	ACCESSORIES
<input type="checkbox"/> LF8INC	<input type="checkbox"/> CP Chicago Plenum. CP fixture height is 12 ⁵ / ₈ " <input type="checkbox"/> MW60A19 Max Wattage label, 60W <input type="checkbox"/> MW75A19 Max Wattage label, 75W <input type="checkbox"/> MW100A23 Max Wattage label, 100W <input type="checkbox"/> MW90PAR38 Max Wattage label, 90W <input type="checkbox"/> MW120PAR38 Max Wattage label, 120W <input type="checkbox"/> MW150PAR38 Max Wattage label, 150W	<input type="checkbox"/> 8V Alzak Semi diffuse	<input type="checkbox"/> Blank Clear Alzak <input type="checkbox"/> CG Champagne Gold Alzak <input type="checkbox"/> PW Pewter Alzak <input type="checkbox"/> WE Wheat Alzak <input type="checkbox"/> LW Light Wheat Alzak <input type="checkbox"/> BL Black Alzak <input type="checkbox"/> BB Black baffle with clear Alzak upper reflector <input type="checkbox"/> WB White baffle with clear Alzak upper reflector	<input type="checkbox"/> TRG Trim ring gasket (factory installed) <input type="checkbox"/> WT White flange	<input type="checkbox"/> B24 Set of two (2) 24" bar hangers for T-bar ceilings <input type="checkbox"/> B6 Set of two (2) bar hangers for ceiling joists up to 24" centers <input type="checkbox"/> FSDF1 Fuse kit for field installation <input type="checkbox"/> SCA8D Sloped ceiling adapter (see note on back page)

PHOTOMETRIC DATA

LiteFrame® - 8" Recessed Incandescent Open Downlight - LF8INC

AVERAGE INITIAL FOOTCANDLES

Multiple Units (Square Array)
Ceiling 80% Wall 50% Floor 20%

Assumptions:

1. Multiple Units (Square Array)
2. Ceiling 80% Wall 50% Floor 20%
3. 4 Fixtures evenly spaced in the center of the room.
4. The room is square and has a width and length equal to twice the lamp spacing.
5. The lumen depreciation factor is 0.8.
6. The dirt depreciation factor is 0.98.

150W A-23

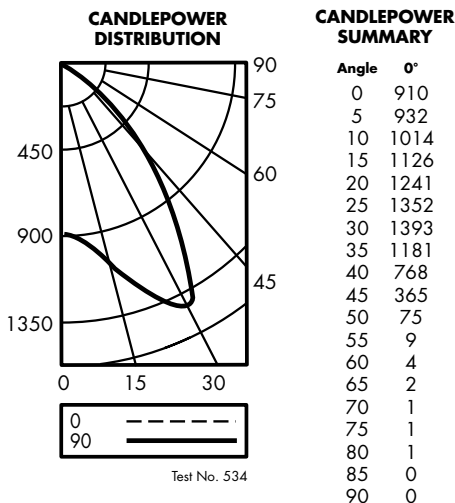
SPACING	RCR1	RCR3	RCR7
7.0	27	23	17
8.0	21	17	13
9.0	16	14	10
10.0	13	11	8
11.0	11	9	7
12.0	9	8	6
13.0	8	7	5
14.0	7	6	4
15.0	6	5	4

LF8INC/8V Specular Clear Alzak Reflector

Lamp: 1-A23/150W-PHILLIPS

Spacing Criteria: 1.3

Efficiency: 72.2%



LUMINANCE DATA IN CANDELA/SQ. METER

Angle in
Vertical

0°	
45°	16955
55°	515
65°	155
75°	127
85°	0

COEFFICIENTS OF UTILIZATION Zonal Cavity Method

Room Cavity Ratio	% Effective Floor Cavity Reflectance																	
	80%			70%			50%			30%			10%			0%		
	20% Effective Floor Cavity Reflectance																	
	% Wall Reflectance																	
	70	50	30	10	70	50	30	10	50	30	10	50	30	10	50	30	10	0
0	.86	.86	.86	.86	.84	.84	.84	.84	.80	.80	.80	.77	.77	.77	.74	.74	.74	.72
1	.81	.79	.77	.75	.80	.78	.76	.74	.75	.73	.72	.72	.71	.70	.69	.69	.68	.66
2	.77	.73	.69	.67	.75	.71	.68	.66	.69	.67	.65	.67	.65	.63	.65	.63	.62	.61
3	.72	.67	.63	.60	.71	.66	.62	.59	.64	.61	.58	.62	.59	.57	.60	.58	.56	.55
4	.68	.61	.57	.53	.66	.61	.56	.53	.59	.55	.52	.57	.54	.52	.56	.53	.51	.50
5	.63	.57	.52	.48	.62	.56	.51	.48	.54	.51	.47	.53	.50	.47	.52	.49	.47	.45
6	.60	.52	.47	.44	.58	.52	.47	.43	.50	.46	.43	.49	.46	.43	.48	.45	.43	.41
7	.56	.48	.43	.40	.56	.48	.43	.40	.47	.42	.39	.46	.42	.39	.45	.41	.39	.38
8	.52	.45	.40	.36	.51	.44	.39	.36	.43	.39	.36	.42	.39	.36	.42	.38	.36	.34
9	.49	.41	.36	.33	.48	.41	.36	.33	.40	.36	.33	.39	.36	.33	.39	.35	.33	.32
10	.46	.38	.34	.30	.46	.38	.33	.30	.37	.33	.30	.37	.33	.30	.36	.33	.30	.29

LF8INC/8V

Test No. 534

NOTES

When ordering a sloped ceiling adapter, specify the degree of slope in 5° increments, max. of 35°. For a more precise degree or wet ceiling applications, please contact factory. The SCA must be installed at the time of housing installation.

Refer to www.prescolite.com for additional photometric tests (IES Files).



Web: www.prescolite.com • Tech Support: (888) 777-4832
701 Millennium Blvd., Greenville, SC 29607 U.S.A. • Phone (864) 678-1000
Copyright ©2012 Prescolite, Inc., a division of Hubbell Lighting, Inc. All Rights Reserved
Specifications subject to change without notice. • Printed in U.S.A. • LFR-INC-017 • 4/2/12



Hubbell Lighting, Inc.