

LNC2 SERIES PRISMATIC

Cat.#

Job

Type



HUBBELL
Outdoor Lighting

Approvals

SPECIFICATIONS

The small sized LNC2 is designed for perimeter illumination for safety, security and identification. No upright and prismatic lenses offer neighbor friendly lighting at typical mounting heights of 8-15'. Units have protective polyester finish for long lasting appearance. Ideal for schools, factories, hospitals, warehouses and retail applications. Energy efficient LEDs provide up to 85% energy savings when compared to traditional light sources with little to no maintenance.

Construction:

Rugged die-cast aluminum housing protects components and provides an architectural appearance. Casting thermally conducts LED heat to optimize performance and long life. Powder paint finish provides durability in outdoor environments.

Electrical:

- 120V-277V universal voltage 50/60Hz 0-10V dimming drivers
- Minimum operating temperature is -40°C/-40°F (excludes P15 configurations)
- Drivers have greater than .90 power factor and less than 20% Total Harmonic Distortion
- Driver RoHS and IP66
- 10kA surge protector

LED(s) CCT:

- 3000K CCT nominal, 4000K CCT nominal, 5000K CCT nominal (70 CRI)

Optical:

Prismatic refractor lens provides ~10% upright for increased vertical FC and forward light projection ideal for security lighting.

Lumen Maintenance:

L96 at 60,000hrs (Projected per IESNA TM-21-11), see table on page 2 for all values

Installation:

Quick-mount adapter provides easy installation to wall or to recessed junction boxes (4" square junction box). Designed for direct j-box mount. Optional 1/2" conduit hubs available (standard for sensor, SiteSync and battery versions).

Options/Controls:

- Universal button photocontrol
- Occupancy sensor options available for complete on/off and dimming control
- SiteSync pre-commissioned wireless controls (with or without sensor)
- Integral Battery Backup provides emergency lighting for the required 90 minute path of egress

Listings:

- Listed to UL1598 and CSAC22.2#250.0-24 for wet locations
- DesignLights Consortium® (DLC) qualified. Please refer to the DLC website for specific product qualifications at www.designlights.org
- Made-to-order versions are IP-65 rated

Warranty:

Five year limited warranty (for more information visit: <https://www.hubbell.com/hubbellightingci/en/warranty>)

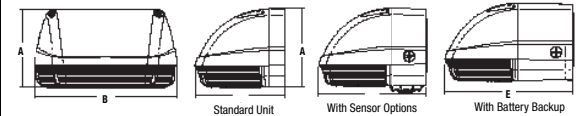
PRODUCT IMAGE(S)



Prismatic Version

DIMENSIONS

Prismatic Refractor Units



A	B	C	D	E
5.54"	10.16"	6.33"	7.64"	9.10"
140.7 mm	258 mm	160.7 mm	194 mm	231 mm

BASE MODEL 7.0 lbs / 3.2 kg

PC SENSOR 7.5 lbs / 3.4 kg • BBU MODELS 9.5 lbs / 4.3 kg

CERTIFICATIONS/LISTINGS



ORDERING INFORMATION – ORDERING EXAMPLE: LNC2-P15-4K-FT-U-BLT-PCU-EH

LNC2

SERIES	LED SELECTION	CCT/CRI	IES DISTRIBUTION	VOLTAGE	FINISH	CONTROL OPTIONS	OPTIONS
LNC2 Small LitePak LNC2	P15 15w Prismatic Refractor	3K 3000K, 70 CRI	FT Forward Throw (Prismatic Refractor only)	U 120V- 277V	BLT Black Matte Textured	SCP ^{2,3} Occupancy Sensor Programmable (Dim) PCU Universal Button Photocontrol SWP ⁴ SiteSync Pre- Commission SWPM ^{4,5} SiteSync Pre- Commission w/ OCC Sensor	EH ¹ Battery Backup Unit with Heater (-30°C) E ¹ Battery Backup Unit (0°C) F ¹ Fuse & Fuse- holder (not avail- able with Battery Backup) CH Surface Conduit Hubs
	P25 25w Prismatic Refractor	4K 4000K, 70 CRI		1 120V	BLS Black Gloss Smooth		
	P35 35w Prismatic Refractor	5K 5000K, 70 CRI		2 208V	DBT Dark Bronze Matte Textured		
				3 240V	DBS Dark Brone Gloss Smooth		
				4 277V	GTT Graphite Matte Textured		
					LGS Light Grey Gloss Smooth		
					PSS Platinum Silver Smooth		
					WHT White Matte Textured		
					WHS White Gloss Smooth		
					VGT Verde Green Textured		
					Color Option		
					CC Custom Color		

SPECIFY SCP HEIGHT

8F Up to 8ft mount height

20F Up to 20ft mount height

1 Must specify voltage (120 or 277 only for E & EH)
2 Must order minimum of one remote control to program dimming settings, 0-10V fully adjustable dimming with automatic daylight calibration and different time delay settings, 120-277V only
3 PCU option not applicable, included in sensor
4 18L - 700mA versions only. Not available with 2DR or 2PF options. Must specify group and zone information at time of order
5 Specify time delay, dimming level and mounting height



Hubbell Outdoor Lighting • 701 Millennium Boulevard • Greenville, SC 29607 • Phone: 864-678-1000

Due to our continued efforts to improve our products, product specifications are subject to change without notice.

© 2020 HUBBELL OUTDOOR LIGHTING, All Rights Reserved • For more information visit our website: www.hubbelloutdoor.com • Printed in USA May 7, 2020 3:58 PM LNC2-SPEC

STOCK ORDERING INFORMATION

Catalog Number	System Watts	Delivered Lumens	Distribution	Voltage	CCT	Current	Weight lbs. (kg)	Finish	Options
LNC2-P35-4K-PCU	37w	4,025	FT	120-277V	4000K	900mA	7.0 (13.3)	Dark Bronze	Photocell
LNC2-P35-PCU	37w	4,108	FT	120-277V	5000K	900mA	7.0 (13.3)	Dark Bronze	Photocell

*Frosted acrylic comfort shield/lens included with unit

REPLACEMENT PART/ACCESSORIES

CATALOG NUMBER	DESCRIPTION
SCP-REMOTE*	Remote control for SCP option. Order at least one per project to program and control fixtures

*Must order minimum of one remote control to program dimming settings, 0-10V fully adjustable dimming with automatic daylight calibration and different time delay settings, 120V or 277V only

PERFORMANCE DATA

Prismatic Refractor

# OF LEDS	NOMINAL WATTS	DIST. TYPE	5K (5000K nominal, 70 CRI)					4K (4000K nominal, 70 CRI)					3K (3000K nominal, 80 CRI)				
			LUMENS	LPW ¹	B	U	G	LUMENS	LPW ¹	B	U	G	LUMENS	LPW ¹	B	U	G
1	15W	FT	1,741	132	0	3	2	1,706	129	0	3	2	1,648	125	0	3	2
	25W		2,929	117	1	3	2	2,806	112	1	3	2	2,773	111	1	3	2
	35W		4,108	112	1	3	3	4,025	110	1	3	3	3,889	106	1	3	3

PROJECTED LUMEN MAINTENANCE

Prismatic Refractor

Ambient Temp.	OPERATING HOURS					
	0	25,000	50,000	TM-21-11 ¹ L96 60,000	100,000	L70 (hours)
25°C / 77°F	1.00	0.94	0.89	0.87	0.80	>160,000
40°C / 104°F	0.99	0.93	0.88	0.86	0.78	>150,000

ELECTRICAL DATA

Prismatic Refractor

# OF LEDS	DRIVE CURRENT (mA)	INPUT VOLTAGE (V)	CURRENT (Amps)	SYSTEM POWER (w)
1	350mA	120	0.11	13
		277	0.05	13
	600mA	120	0.21	25
		277	0.09	25
	900mA	120	0.31	37
		277	0.13	37

LUMINAIRE AMBIENT TEMPERATURE FACTOR (LATF)

Prismatic Versions

AMBIENT TEMPERATURE	LUMEN MULTIPLIER	
0°C	32°F	1.02
10°C	50°F	1.01
20°C	68°F	1.00
25°C	77°F	1.00
30°C	86°F	1.00
40°C	104°F	0.99
50°C	122°F	0.98

Use these factors to determine relative lumen output for average ambient temperatures from 0-40°C (32-104°F).



Hubbell Outdoor Lighting • 701 Millennium Boulevard • Greenville, SC 29607 • Phone: 864-678-1000

Due to our continued efforts to improve our products, product specifications are subject to change without notice.

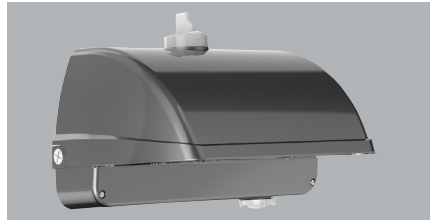
© 2020 HUBBELL OUTDOOR LIGHTING, All Rights Reserved • For more information visit our website: www.hubbelloutdoor.com • Printed in USA May 7, 2020 3:58 PM LNC2-SPEC

SCP - Programmable Occupancy Sensor



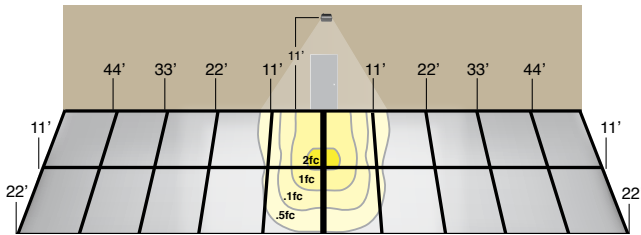
Sensor offers greater control and energy savings with SCP programmable sensor with adjustable delay and dimming levels (Factory default is 10%) Visit: <http://www.hubbellighting.com/solutions/controls/> for control application information

SWP & SWPM - SiteSync™



When ordering a fixture with the SiteSync lighting control option, additional information will be required to complete the order. The SiteSync Commissioning Form or alternate schedule information must be completed. This form includes Project locations Group information, and Operating schedules. For more detailed information please visit www.HubbellLighting.com/products/sitesync or contact Hubbell Lighting tech support at (800) 345-4928.

LNC2 – BATTERY BACK UP



11' Mounting Height

Provides Life Safety Code average illuminance of 1.0 fc. Assumes open space with no obstructions and mounting height of 11'.

Diagrams for illustration purposes only, please consult factory for application layout.

Battery backup units consume 6 watts when charging a dead battery and 2 watts during maintenance charging. EH (units with a heater) consume up to an additional 8 watts when charging if the battery temp is lower than 10°C