

LNC4

LARGE LED LITEPAK

FEATURES

- Litepak LNC4 features four different lumen packages and multiple distributions and CCT for maximum light level and mounting height flexibility
- Capable of replacing up to 400w HID solutions at over 70% energy savings
- Easy to install and retrofit existing HID luminaires with same footprint
- Zero uplight Compact LED Architectural Wallpack
- Inverted "up" mounting capable
- Control capabilities offer additional energy savings options
- Ideal applications include: perimeter illumination, schools, factories, hospitals, warehouses and retail applications



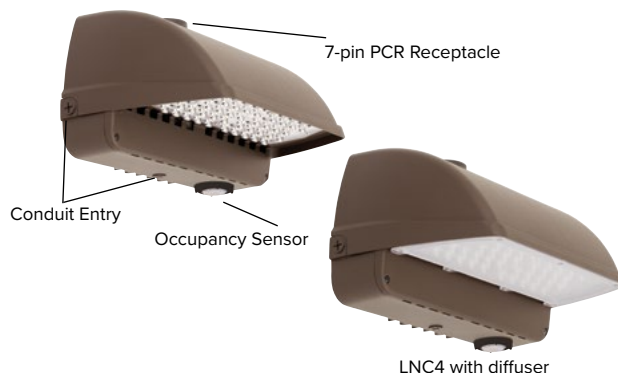
*3000K and warmer CCTs only

See Certification Specifications

CONTROL TECHNOLOGY



DATE:	LOCATION:
TYPE:	PROJECT:
CATALOG #:	



RELATED PRODUCTS

Ø [LNC](#)

Ø [INC2](#)

Ø [LNC3](#)

SPECIFICATIONS

CONSTRUCTION

- Die-cast aluminum housing protects components and provides an architectural appearance.
- Casting thermally conducts LED heat to optimize performance and long life
- Powder paint finish provides durability in outdoor environments
- Four 1/2" conduit entries (top, bottom, and sides) provided for surface conduit
- Zero uplight distributions using individual acrylic LED optics provide IES type II, III and IV distributions
- CS - Frosted acrylic diffuser option for reduced glare
- CSU - Frosted acrylic diffuser for inverted "up" mounting applications (lens required)

OPTICS

- 3000K, 4000K and 5000K CCT nominal with 70 CRI
- 36 and 44 LED configurations available

INSTALLATION

- Quick-mount adapter with gasket seal provides easy installation to wall or to recessed junction box (4" square junction box)
- Fixture attaches by two Allen-head hidden fasteners for tamper resistance
- Designed for direct j-box mount or conduit feed on all four sides in single SKU

ELECTRICAL

- 120-277, 347 and 480 voltage, 50/60Hz, 0-10V dimming drivers.
- L96 at 25,000 hrs (Projected per IESNA TM-21-11), see table on page 2 for all values
- Electronic driver: 10 kA surge protection.
- Ambient operating temperature -40°C to 40°C

CONTROLS

- Button photocontrol for dusk to dawn energy savings
- 7-pin photo-receptacle available for twist lock photocell and controls by others
- Occupancy sensor options available for complete on/off and dimming control
- SiteSync pre-commissioned wireless controls (with or without sensor)
- In addition, the LNC4 can be specified with SiteSync™ wireless control system for reduction in energy and maintenance cost while optimizing light quality 24/7
- See ordering information or visit www.hubbellighting.com/sitesync for more details.

CERTIFICATIONS

- DesignLights Consortium® (DLC) qualified. Please refer to the DLC website for specific product qualifications at www.designlights.org
- Listed to UL1598 and CSAC22.2#250.0-24 for wet locations
- IP65 Assembly
- IDA Approved (3000K configurations)
- This product qualifies as a "designated country construction material" per FAR 52.225-11 Buy American-Construction Materials under Trade Agreements effective 04/23/2020. See [Buy American Solutions](#)

WARRANTY

- 5 year limited warranty
- See [HLI Standard Warranty](#) for additional information

KEY DATA	
Lumen Range	4,269–14,793
Wattage Range	40.3–170
Efficacy Range (LPW)	75.2–117
Fixture Projected Life (Hours)	L96>25K
Weights lbs. (kg)	27.0 (12.2)

LNC4

LARGE LED LITEPAK

DATE:	LOCATION:
TYPE:	PROJECT:
CATALOG #:	

ORDERING GUIDE

Example: LNC4-36L-3K-035-2-U-DB-PCU

CATALOG #

ORDERING INFORMATION

Series	# LEDs	CCT/CRI	Drive Current	IES Distribution	Voltage	Finish
LNC4 Large Litepak Wallpack	36L 36LEDs 44L 44LEDs	3K 3000K nominal, 70 CRI 4K 4000K nominal, 70 CRI 5K 5000K nominal, 70 CRI	035 350mA 065 650mA 105 1050mA	2 Type II 3 Type III 4 Type IV	U 120-277V 1 120V 2 208V 3 240V 4 277V 5 480V F 347V	BLT Black Matte Textured BLS Black Gloss Smooth DBT Dark Bronze Matte Textured DBS Dark Brone Gloss Smooth GTT Graphite Matte Textured LGS Light Grey Gloss Smooth PSS Platinum Silver Smooth WHT White Matte Textured WHS White Gloss Smooth VGT Verde Green Textured Color Option CC Custom Color

Control Options	Options
PCU Universal Button Photocontrol	CS Frosted acrylic diffuser
7PR 7pin PCR ⁴	CSU Inverted/Up mounting frosted acrylic diffuser (required for up/inverted fixture installations, factory install only see page 3) ¹
SCP Programmable occupancy sensor ^{2,3}	
SWP SiteSync Pre-Commission ^{6,9}	
SWPM SiteSync Pre-commission w/ OCC Sensor ^{3,5,6,7}	

Notes:

- 1 Factory install only. Not available with SCP or SWPM sensor/control options
- 2 Must order minimum of one remote control to program dimming settings, 0-10V fully adjustable dimming with automatic daylight calibration and different time delay settings, 120-277V only
- 3 PCU option not applicable, included in sensor (8F = up to 8ft, 20F = up to 20ft)
- 4 Accepts standard 3, 5, and 7-Pin ANSI controls (by others). Not available with PCU, SWP or SWPM control options
- 5 Must specify group and zone information at time or order. See www.HubbellLighting.com/products/sitesync for future details
- 6 Specify time delay; dimming level and mounting height
- 7 1150mA for 120-227V only or 650mA for 347V or 480V

STOCK ORDERING INFORMATION

Catalog Number	Lumens	LPW	Wattage	No. of LEDs	CCT/CRI	Voltage	Distribution	Weight lbs. (kg)	No. of Drivers	Current
LNC4-36L-4K	10,754	86.3	124.6	36	4000K	120-277V	IV	27.0 (12.2)	2	1050mA
LNC4-44L-4K-7PR	13,477	88.3	152.6	44	4000K	120-277V	IV	27.0 (12.2)	2	1050mA
LNC4-44L-4K-SCP	13,477	88.3	152.6	44	4000K	120-277V	IV	27.0 (12.2)	2	1050mA

CONTROLS

Hubbell Control Solutions — Accessories (Sold Separately)

NX Distributed Intelligence™

☐ NXOFM-1R1D-UNV On-fixture Module (7-pin), On / Off / Dim, Daylight Sensor with HubbNET Radio and Bluetooth® Radio, 120–480VAC

wiSCAPE® Lighting Control

☐ WIR-RME-L On-fixture Module (7-pin or 5-pin), On / Off / Dim, Daylight Sensor with wiSCAPE Radio, 110–480VAC

For additional information related to these accessories please visit www.hubbellcontrolsolutions.com. Options provided for use with integrated sensor, please view specification sheet ordering information table for details.

SiteSync 7-Pin Module:

- SiteSync features in a new form
- Available as an accessory for new construction or retrofit applications (with existing 7-Pin receptacle)
- Does not interface with occupancy sensors



SW7PR



LNC4

LARGE LED LITEPAK

ACCESSORIES AND SERVICES (ORDERED SEPARATELY)

Catalog Number	Description
<input type="checkbox"/> LNC4-CS	Frosted acrylic comfort shield/lens, reduces glare and improves uniformity with only 20% lumen reduction
<input type="checkbox"/> SCP-Remote	Remote Control for SCP/_F option. Order at least one per project to program and control the occupancy sensor
<input type="checkbox"/> SWUSB	SiteSync interface software loaded on USB flash drive for use with owner supplied PC (Windows based only). Includes SiteSync license, software and USB radio bridge node*
<input type="checkbox"/> SWTAB	Windows tablet and SiteSync interface software. Includes tablet with preloaded software, SiteSync license and USB radio bridge node*
<input type="checkbox"/> SWBRG	SiteSync USB radio bridge node only. Order if a replacement is required or if an extra bridge node is requested
<input type="checkbox"/> SW7PR	SiteSync 7 Pin on fixture module On/Off/Dim, Daylight Sensor 120-480VAC ⁺

Notes:

* When ordering SiteSync at least one of these two interface options must be ordered per project

+ Available as a SiteSync retrofit solution for fixtures with an existing 7pin receptacle

PERFORMANCE DATA

# Of LEDs	Nominal Wattage	System Watts	Dist. Type	5K (5000K NOMINAL 70 CRI)					4K (4000K NOMINAL 70 CRI)					3K (3000K NOMINAL 80 CRI)				
				Lumens	LPW*	B	U	G	Lumens	LPW*	B	U	G	Lumens	LPW*	B	U	G
4	N/A	N/A	E	671	-	-	-	-	657	-	-	-	-	591	-	-	-	-
36	350mA	40.3	2	4,529	112	1	0	1	4,593	114	1	0	1	4,269	106	1	0	1
			3	4,718	117	1	0	1	4,631	115	1	0	1	4,305	107	1	0	1
			4	4,441	110	1	0	2	4,502	112	1	0	2	4,186	104	1	0	2
44		49.3	2	5,536	112	1	0	2	5,613	114	1	0	2	5,218	106	1	0	1
			3	5,766	117	1	0	2	5,656	115	1	0	2	5,262	107	1	0	1
			4	5,427	110	1	0	2	5,503	112	1	0	2	5,116	104	1	0	2
36	650mA	80	2	7,627	95.3	2	0	2	7,440	93.0	2	0	2	6,756	84.4	2	0	2
			3	7,590	94.9	1	0	2	7,404	92.5	1	0	2	6,723	84.0	1	0	2
			4	7,611	95.1	1	0	3	7,424	92.8	1	0	3	6,742	84.3	1	0	3
44		96	2	9,094	94.7	2	0	2	9,221	96.0	2	0	2	8,572	89.3	2	0	2
			3	9,472	98.7	2	0	2	9,298	96.9	1	0	2	8,644	90.0	1	0	2
			4	8,916	92.9	1	0	3	9,040	94.2	1	0	3	8,405	87.6	1	0	3
36	1150mA	140	2	11,911	86.6	2	0	2	11,619	84.5	2	0	2	10,551	76.7	2	0	2
			3	11,853	90.2	2	0	2	11,563	88.0	2	0	2	10,500	79.9	2	0	2
			4	11,886	84.9	1	0	3	11,595	82.8	1	0	3	10,529	75.2	1	0	3
44		170	2	14,202	83.6	2	0	3	14,400	84.7	3	0	3	13,387	78.7	2	0	2
			3	14,793	87.0	2	0	3	14,521	88.2	2	0	3	13,499	82.0	2	0	3
			4	13,924	81.9	2	0	3	14,118	83.0	2	0	3	13,127	77.2	2	0	3

Lumen values are from photometric tests performed in accordance with IESNA LM-79-08. Data is considered to be representative of the configurations shown. Actual performance may differ as a result of end-user environment and application.

LNC4

LARGE LED LITEPAK

ELECTRICAL DATA

Configurable Versions

# OF LEDs	Drive Current (mA)	Input Voltage (V)	Oper. Current (Amps)	System Power (W)
36	350mA	120	0.34	40
		277	0.15	40
		347	0.12	40
		480	0.08	40
44		120	0.41	49
		277	0.18	49
		347	0.14	49
		480	0.10	49
36	650mA	120	0.66	80
		277	0.29	80
		347	0.23	80
		480	0.17	80
44		120	0.80	96
		277	0.35	96
		347	0.28	96
		480	0.20	96
36	1150mA	120	1.17	140
		277	0.51	140
		347	0.40	140
		480	0.29	140
44		120	1.42	170
		277	0.61	170
		347	0.49	170
		480	0.35	170

Stocked Versions

36	STD. (1050)mA	120	1.03	124
44		277	0.45	124
		120	1.27	152
		277	0.55	152

PROJECTED LUMEN MAINTENANCE

Ambient Temperature	OPERATING HOURS					
	0	25,000	50,000	TM-21-11* L96 60,000	100,000	L70 (Hours)
25°C / 77°F	1.00	0.96	0.92	0.91	0.85	>223,000
40°C / 104°F	1.00	0.94	0.89	0.87	0.80	>159,000

* Projected per IESNA TM-21-11 * (Nichia 219B, 700mA, 85°C Ts, 10,000hrs). Data references the extrapolated performance projections for the LNC-12LU-5K base model in a 40°C ambient, based on 10,000 hours of LED testing per IESNA LM-80-08.

LUMINAIRE AMBIENT TEMPERATURE FACTOR (LATF)

Ambient Temperature	Lumen Multiplier
0° C / 32° F	1.02
10° C / 50° F	1.01
20° C / 68° F	1.00
25° C / 77° F	1.00
30° C / 86° F	1.00
40° C / 104° F	0.99

Use these factors to determine relative lumen output for average ambient temperatures from 0-40°C (32-104°F).

USE OF TRADEMARKS AND TRADE NAMES

All product and company names, logos and product identifies are trademarks ™ or registered trademarks ® of Hubbell Lighting, Inc. or their respective owners. Use of them does not necessarily imply any affiliation with or endorsement by such respective owners.

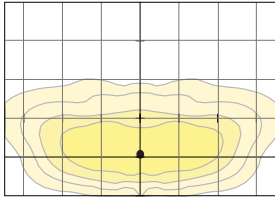
LNC4

LARGE LED LITEPAK

PHOTOMETRY

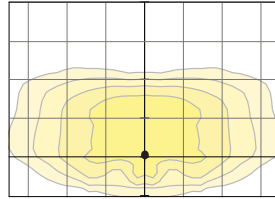
The following diagrams represent the general distribution options offered for this product. For detailed information on specific product configurations, see [website photometric test reports](#).

LNC4-36L-5K-105-2 – Type II



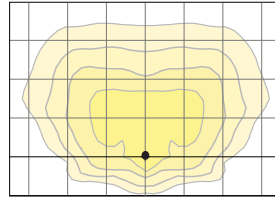
Mounting Height: 20'

LNC4-36L-5K-105-3 – Type III



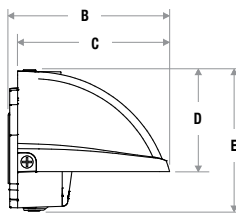
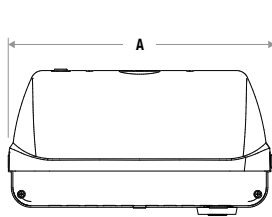
Mounting Height: 20'

LNC4-36L-5K-105-4-U – Type IV (Forward Throw)



Mounting Height: 20'

DIMENSIONS



A	B	C	D	E	Weight
17.2" (436 mm)	10.5" (266 mm)	9.9" (251 mm)	6.5" (165 mm)	8.9" (226 mm)	27.0 lbs 12.3 kg

ADDITIONAL INFORMATION

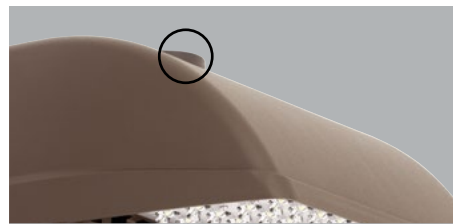
CSU – INVERTED MOUNTING OPTION



*Requires Factory Installed Lens Option

Inverted mounting capabilities for uplighting applications. Specially designed frosted acrylic diffuser option softens output, improves uniformity and protects LED lenses.

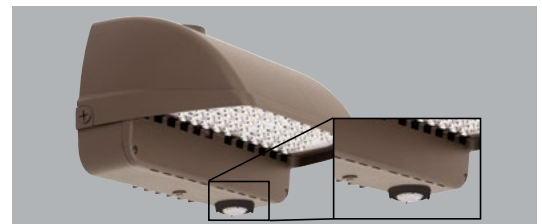
SCP – PROGRAMMABLE OCCUPANCY SENSOR



*Photocontrol and Wireless Controls by Others

Standard NEMA 7-Pin receptacle for twist lock photocell or wireless controls (by others).

SCP – PROGRAMMABLE OCCUPANCY SENSOR



Sensor offers greater control and energy savings with SCP programmable sensor with adjustable delay and dimming levels (Factory default is 10%)

Visit: <http://www.hubbelllighting.com/solutions/controls/> for control application information

SHIPPING INFORMATION

Catalog Number	G.W(kg)/CTN	Carton Dimensions			Carton Qty. per Master Pack
		Length Inch (cm)	Width Inch (cm)	Height Inch (cm)	
LNC3-36L	27.0 (12.2)	19.7 (50)	13.0 (33)	13.0 (33)	1
LNC4-44L					