



Recessed Step Light

ALE

One 25W A-19 Incandescent Lamp
Non-IC Rated
120V

DATE: _____ TYPE: _____

FIRM NAME: _____

PROJECT: _____

LiteStep

For conversion to millimeters,
multiply inches by 25.4
Not to Scale

APPLICATIONS:

The ALE incandescent step light is an ideal solution for a wide variety of interior applications including commercial, retail, and residential projects.

HOUSING:

Welded steel housing with white baked enamel finish complete with thermal protector.

FACEPLATE:

Die cast aluminum hinged louvered faceplate. Faceplates do not contain a lens. Available in black (BL), bronze (BZ), white (WH) or Prescolite's exclusive Zet (Z, metallic silver) finish.

LAMP:

One (1) 25W A-19 lamp. Lamp furnished by others.

SOCKET:

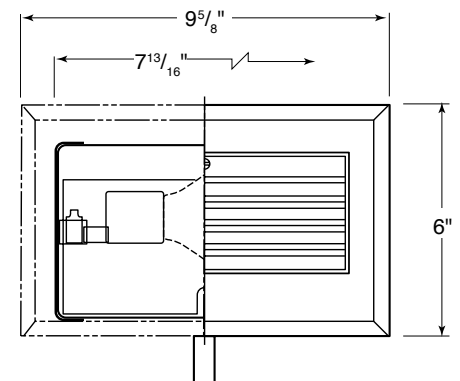
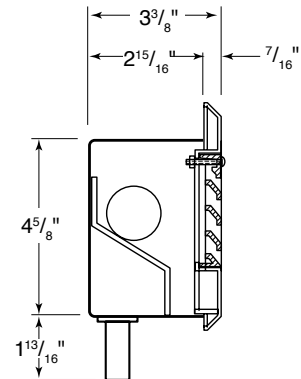
One (1) medium base porcelain socket with nickel plated screw shell.

INSTALLATION:

Galvanized steel mounting brackets are included.

LABELS:

U.L., CSA approved for damp locations and concrete pour. Contact Technical Support for questions. Approved for exterior/interior installations. Non-IC rated, not approved for through wiring. Consult factory for N.Y. City approval



CATALOG NUMBER:

EXAMPLE: ALEBZ

HOUSING AND FACEPLATE

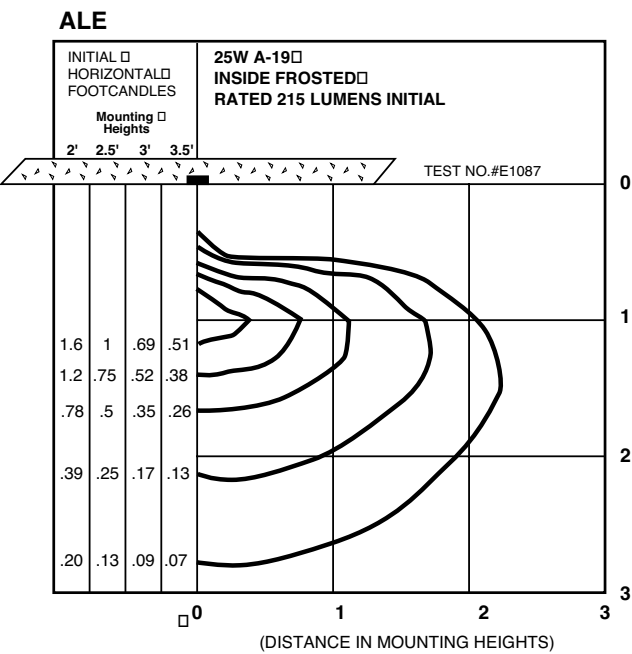
FINISH

- | | |
|--|---|
| <input type="checkbox"/> ALE
25W A-19
Incandescent
Non-IC recessed step
light | <input type="checkbox"/> BL
Black |
| | <input type="checkbox"/> BZ
Bronze |
| | <input type="checkbox"/> WH
White |
| | <input type="checkbox"/> Z
Zet, metallic silver |

PHOTOMETRIC DATA

LiteStep
Step Light - ALE

LAMP DATA	
Rated Watts	25W
Rated Lumens	210
Efficacy (LPW)	8.4
Rated Life (hours)	1000
Base	Medium



NOTES

Refer to www.prescolite.com for additional photometric tests (IES Files).



Web: www.prescolite.com • Tech Support: (888) 777-4832
701 Millennium Blvd., • Greenville, SC 29607 U.S.A. • Phone (864) 599-6000
Prescolite is a division of Hubbell Lighting, Inc., with representatives' offices throughout North America
Copyright ©2013 Prescolite, All Rights Reserved • Specifications subject to change without notice. • Printed in U.S.A. • LS-011 • 4/9/13

