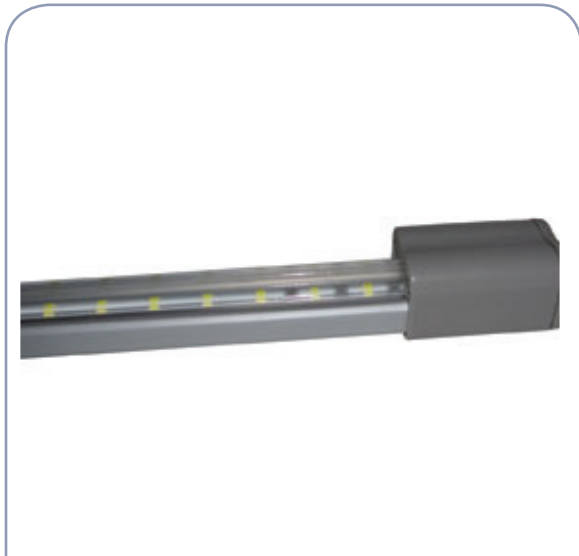


CAT#:

Job:

Type:



Features

Built for superior LED performance packed with features

- Optimized refractive optic design to get the light where it is needed
- Evenly distributed light on products from the glass
- Multiple world-class LEDs per foot for even light distribution
- Available in three color temperatures: 3000K, 4000K, and 5000K
- Good color rendering
- Supports dimming through an occupancy sensor
- 5 year warranty
- Certifications:
 - NSF pending
 - UL listed USA and Canada file # E324062
 - DLC pending

Certifications/Listings



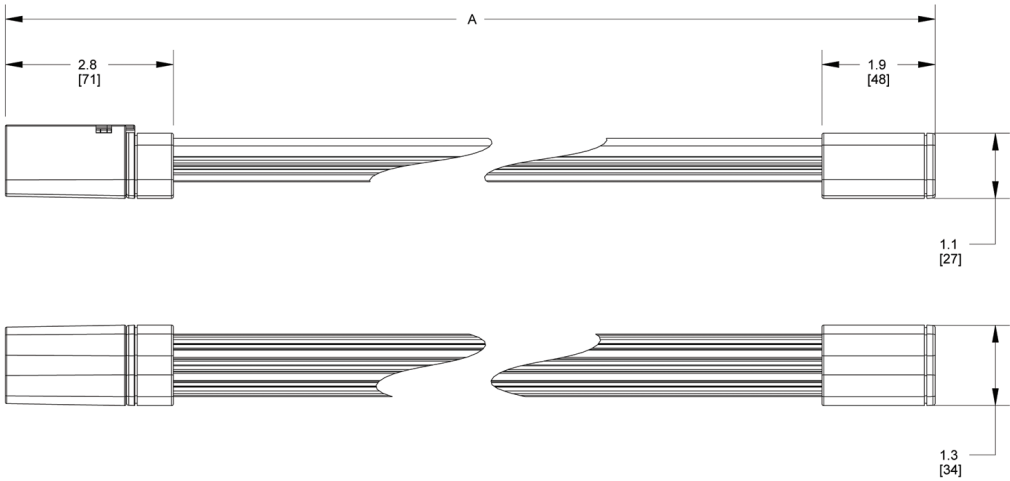
Ordering Information

ESRP-4	5	4	24	1	40	D10	L
SERIES	VARIANT	OPTICAL PATTERN	INPUT VOLTAGE	LENGTH	COLOR TEMP	LENS DIFFUSER	LOCATION
ESRP-4	1 End 6 Center	4 Optimized for 4" shelf depth	24 24V	4 4' unit 5 5' unit 6 6' unit	40 4000K 50 5000K	D10 Diffused-100	L Left C Center R Right

Specifications

Description:

- EcoStar ESRP-4 is a refrigeration display lighting solution designed with advanced LED and lens technologies. Offering superior, evenly-dispersed light output while using less power than conventional methods than other competing LED brands, EcoStar ESRP-4 sets the standard in the marketplace in quality and value. Optimized for 4 inch shelves, custom lens types match the position in the display case (i.e. Center, Left End, or Right End), directing light where it is needed. Combined with two color temperature options and the ability to dim through an occupancy sensor, EcoStar ESRP-4 makes it easy to create the ideal look and feel.



Length (ft)	A (in) [mm]
4	48.5 [1232]
5	59.7 [1516]
6	70.9 [1801]

Performance Summary 5000K

	Center Unit	End Unit
Luminaire Input Voltage (VDC)	24	24
Driver Input Voltage (VAC)	120-277	120-277
Power Consumption (W/ft)	2.8	1.87
Delivered Luminous Flux (Lm/ft)	215	130
System Efficacy (Lm/W)	76	71
Operating Temperature (°C)	-20 to 30	-20 to 30
Typical Color Rendering Index	85	85
LED L70 Lifetime (hrs)	137,000	137,000

All performance data has been acquired by physical test reports conducted to LM-79-08 standards in a controlled testing laboratory.