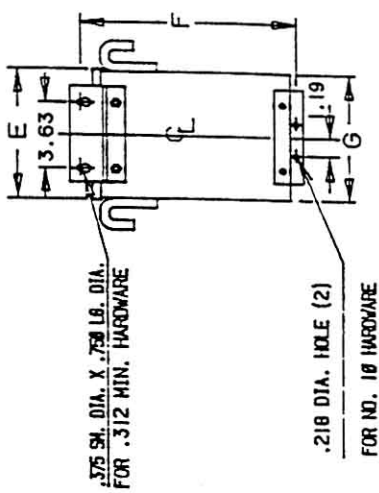


Acme Electric Corp.  
LUXBERTON, N.C.

OUTLINE

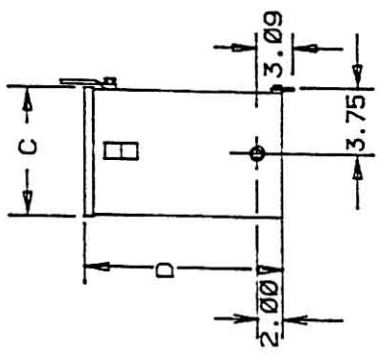
TYPE NO.	
DRAWN BY	SJ HART
DATE	1/16/58
DESIGN	
CHK. BY	SJH
APP.	MF
MAT'L	
FINISH	
SCALE	NONE
SHEET	1 OF 1
UNLESS OTHERWISE SPECIFIED	
DIMENSIONS ARE IN INCHES	
FRACTIONAL DECIMALS : 1/16	
DO NOT SCALE DRAWING	

CADD DWG. 700070-02

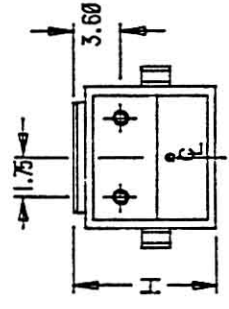


BACK

- NOTES:
1. FRONT ACCESS NOT AVAILABLE ON BUCK - BOOST.
  2. INDICUTS:  
1.69 DIA. FOR 1.25 CONDUIT  
1.13 DIA. FOR .75 CONDUIT



SIDE



BOTTOM

115 °C RISE  
SINGLE PHASE 3-5 KVA

TOTALLY ENCLOSED  
ENCAPSULATED DISTRIBUTION TRANSFORMERS  
FRONT ACCESS AND BUCK-BOOST

KVA	DIMENSIONS								WT. LBS.
	A	B	C	D	E	F	G	H	
3.00	10.31	12.50	6.65	10.19	7.81	11.50	7.68	7.13	5.5
5.00	10.31	15.63	6.65	13.06	7.81	14.38	7.68	7.13	7.5