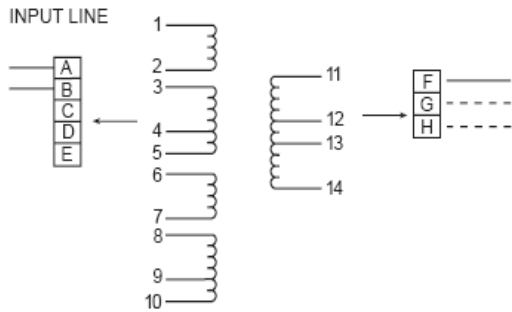
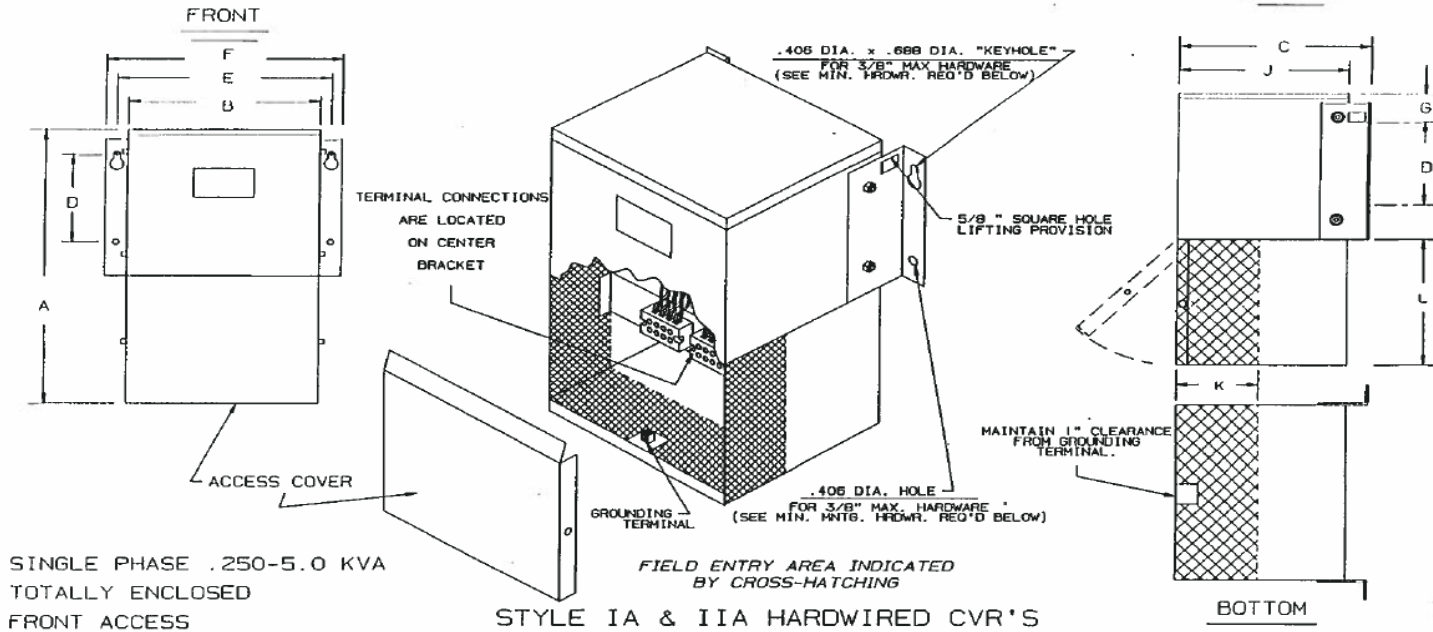


Revisions



Volts	Input Connections		& Isolate
	Volts	Connect	
120	1, 3, 6, 8 to A 2, 5, 7, 10 to B	4, 9	
208	1, 6 to A 4, 9 to B 2, 3 to C 7, 8 to D	5, 10	
240	1, 6 to A 5, 10 to B 2, 3 to C 7, 8 to D	4, 9	
480	1 to A 10 to B 2, 3 to C 5, 6 to D 7, 8 to E	4, 9	

Volts	Output Connections		Output Lines To
	Volts	Connect	
120	11 to F 12 to G 14 to H	F, G	
120/240	11 to F 12 to G 14 to H	F, G, H	
208	11 to F 12 to G 13 to H	F, H	
240	11 to F 12 to G 14 to H	F, H	

NOTE: To prevent externally shorting, all leads marked "INSULATE" must be individually capped with wire nuts or equivalent. Insulate leads individually!

CERTIFIED DIMENSION SHEET

CATALOG NUMBER	KVA SIZE	A HEIGHT	B WIDTH	C DEPTH	WEIGHT		D	E	F	G	J	MIN. MNTG. HRDWR.	K	L
					NET	SHIP (ESTIMATE)								
T-1-69430	.250	15.5	6.3	5.8	32	42	5.625	8.125	9.3	1.2	5.0	4 BOLTS	2.5	8.5
T-1-69431	.350	17.0	7.0	7.3	46	56	5.625	8.125	9.4	2.3	6.5	MIN. DIA.	3.0	8.5
T-1-69432	.500	17.0	7.0	7.3	48	58	5.625	8.125	9.4	2.3	6.5	.25 IN.	3.0	8.5
T-1-69433	.750	17.0	7.0	7.3	62	72	5.625	8.125	9.4	2.3	6.5		3.0	8.5
T-1-69434	1.0	18.5	6.5	8.55	77	87	5.625	8.125	9.5	2.3	7.75		3.5	8.5
T-1-69435	2.0	19.0	10.5	10.2	132	147	6.0	12.0	13.25	2.3	9.4	4 BOLTS	4.5	8.5
T-1-69436	3.0	19.0	10.5	10.2	166	181	6.0	12.0	13.25	2.3	9.4	MIN. DIA.	4.5	8.5
T-1-69437	5.0	22.0	12.5	12.2	283	300	6.0	14.0	15.25	2.3	11.4	5/16 IN.	5.0	8.5

ALL DIMENSIONS ± .15" TOLERANCE.

THESE UNITS CAN BE EITHER FLOOR OR WALL MOUNTED.

ACME ELECTRIC

Type No.

DRAWN:

DATE: July 17, 2013