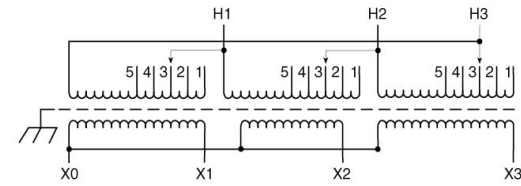
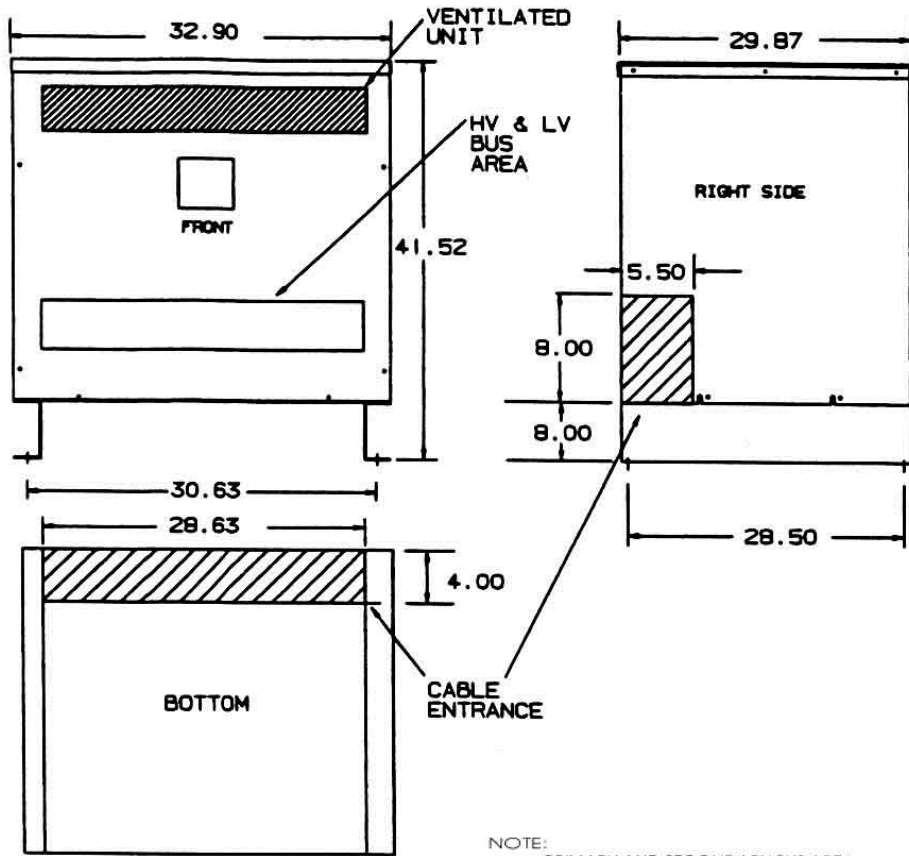


Revisions



Primary Volts	%	Connect Leads to Tap No.
604	105	1
589	102.5	2
575	100	3
561	97.5	4
546	95	5
Secondary Volts		
460		X1, X2, X3
266		X1 & X0
1 phase		X2 & X0
		X3 & X0

NOTE: PRIMARY AND SECONDARY BUS AREA IN FRONT OF CASE.

KEY: [Hatched Box] DENOTES CONDUIT AREAS

KVA	CATALOG NUMBER	VOLTAGE		WEATHER SHIELD	WEIGHT	PHASE	FREQ.
		HIGH	LOW				
175	DTHB-0175-4S	575Δ	460Y/266	WS-A-4	1130 Lbs	3φ	60 Hz

TYPICAL PERFORMANCE DATA

Winding Rise	150°C	Regulation @ 100% PF	Impedance: 4.2%	Typical Efficiency	
Insulation	220°C			No Load Losses	
Sound Level	55 dB	Standards:	UL/CSA	Full Load Losses	

ACME ELECTRIC

Type No.