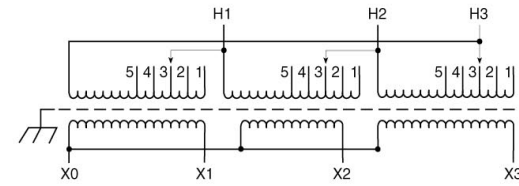
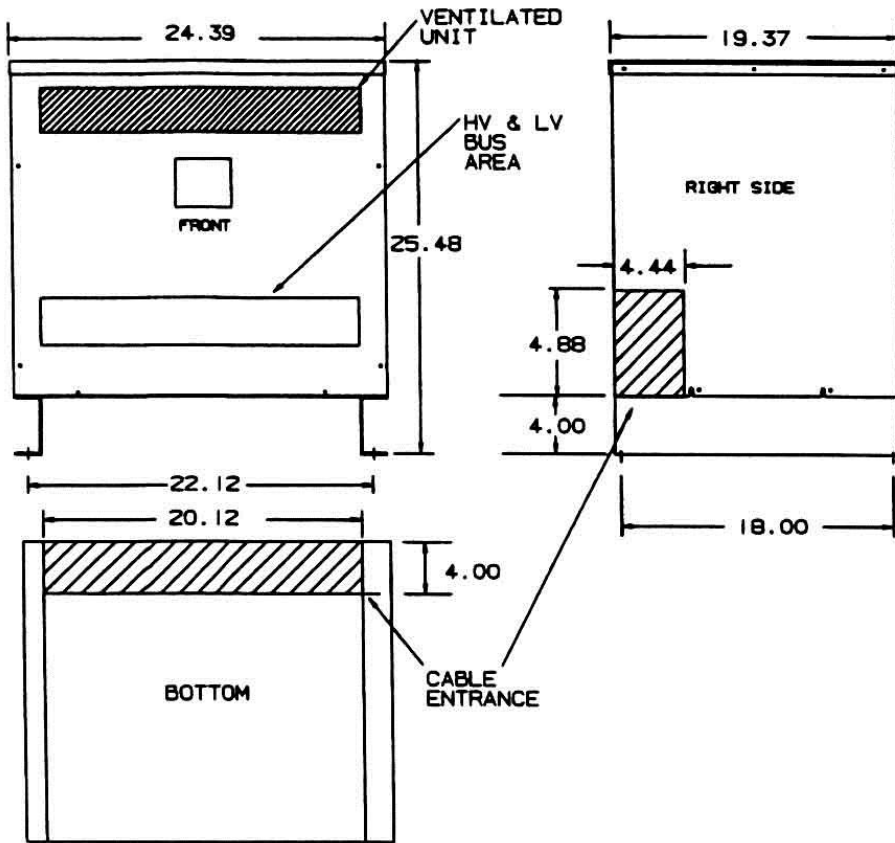


Revisions



Primary Volts	%	Connect Leads to Tap No.
604	105	1
589	102.5	2
575	100	3
561	97.5	4
546	95	5
Secondary Volts		
460		X1, X2, X3
266		X1 & X0 X2 & X0 X3 & X0
1 phase		

NOTE: PRIMARY AND SECONDARY BUS AREA IN FRONT OF CASE.

KEY: DENOTES CONDUIT AREAS

KVA	CATALOG NUMBER	VOLTAGE		WEATHER SHIELD	WEIGHT	PHASE	FREQ.
		HIGH	LOW				
27	DTHB-027-4S	575Δ	460Y/266	WS-A-1	320 Lbs	3φ	60 Hz

Winding Rise:	150°C
Insulation:	220°C
Sound Level:	45db

TYPICAL PERFORMANCE DATA

Regulation @ 100% PF:	
Standards:	UL/CSA

Windings:	AL
Impedance:	4.50%

Typical Efficiency:	
No Load Losses:	
Full Load Losses:	

Type No. _____

DRAWN: _____

DATE: July 28, 2014

CASE 1

		Control 7	A
--	--	--------------	---

