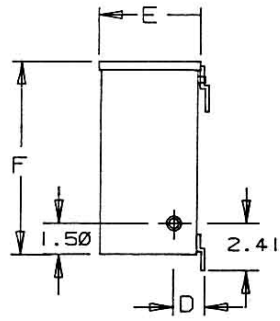
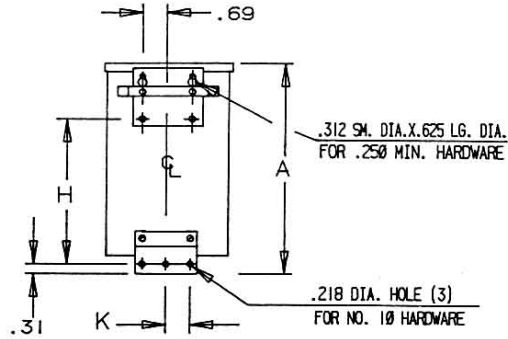


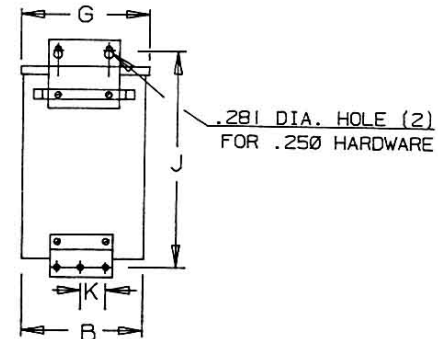
Revisions



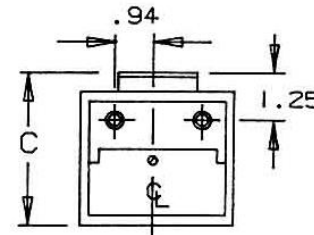
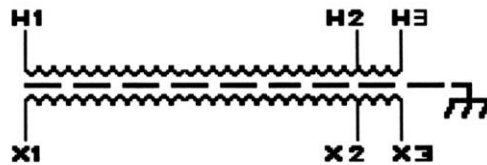
SIDE



BACK (1)



BACK (2)



BOTTOM

INPUT CONNECTIONS		
VOLTS	INPUT LINES 1 2	
277	H1	H2
480	H1	H3

OUTPUT CONNECTIONS		
VOLTS	OUTPUT LINES 1 2	
208	X1	X2
277	X1	X3

KVA	CATALOG NUMBER	VOLTAGE		WIRING DIAGRAM	WEIGHT	PHASE	FREQ.
		HIGH	LOW				
.250	GP12-250-S	277 / 480	208 / 277		Lbs	1	60 Hz

TYPICAL PERFORMANCE DATA

Winding Rise	115°C
Insulation	180°C
Sound Level	45 dB

Regulation @ 100% PF	4.6%
----------------------	------

IMPEDANCE	5.64%
-----------	-------

Typical Efficiency	85.28%
Full Load Losses	43.16 W
No Load Losses	29.05 W

A	B	C	D	E	F	G	H	J	K
8.20	3.90	3.88	1.30	3.67	7.36	4.08	4.70	8.68	0.94



Type No.

A

PRINTS TO

CONTROL
7

GP12-250-S