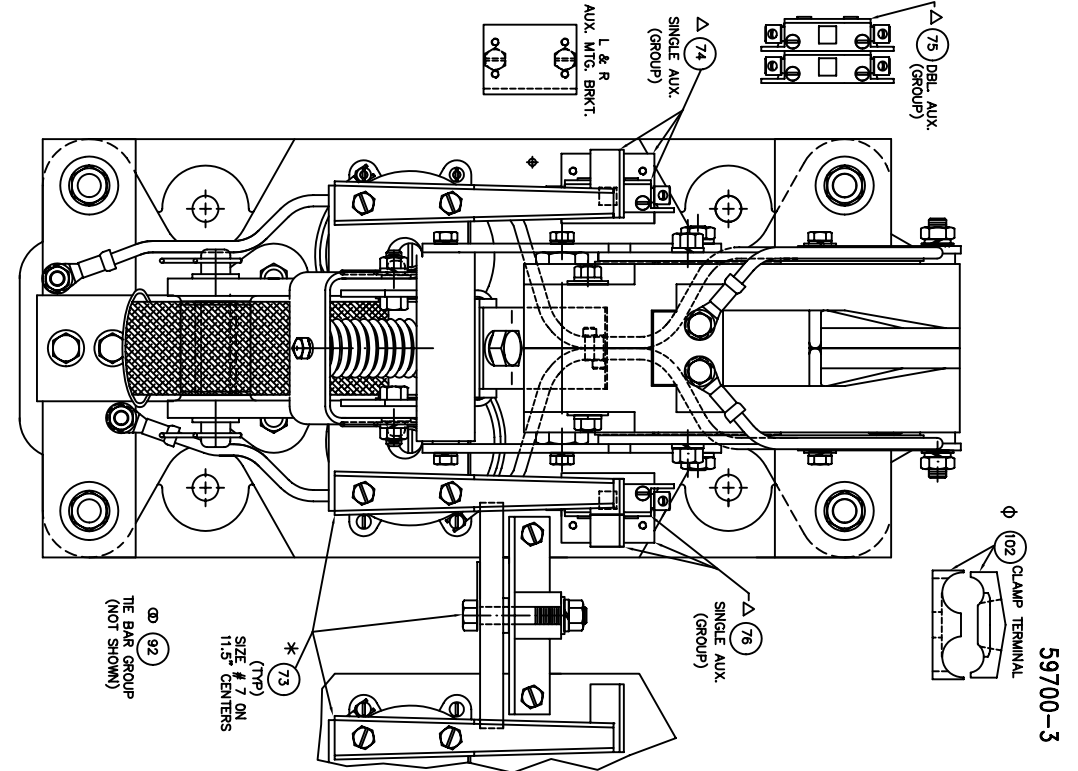


NOTE: WHEN ORDERING REPAIR PARTS BE SURE TO FURNISH SERIAL NUMBER & TYPE NUMBER WHICH ARE LOCATED ON THE NAMEPLATE. ALSO PART NAME AND PART NUMBER.

ITEM	DESCRIPTION	QTY	PART NO.
1	CONTACT TIP	2	SEE CHART
2			
3	SHUNT ASSEMBLY	1	59605-711
4	TERMINAL BUSS	1	59590-702
5	ARMATURE SUPPORT ASSEMBLY	1	59609-001
6	ARMATURE ASSEMBLY	1	59608-620
7			
8	ARMATURE HINGE PIN	1	59649-002
9	CONTACT REST YOKE	1	59607-000
10	SPRING	1	67981-009
11	SPRING RETAINER YOKE	1	59606-000
12	HOLDER ARM HINGE PIN	1	59648-011
13	500-13 X 1.25 LG. S.S. HEX HEAD SCREW	2	47252-242
14	500-13 X 1.00 LG. S.S. HEX HEAD SCREW	2	47252-242
15	500-13 X 1.00 LG. HEX HEAD SCREW	2	47246-103
16	3/75-16 X 1.00 LG. HEX HEAD SCREW	2	47250-295
17	3/75 S.S. FLAT WASHER	2	47250-295
18	3/75 LOCK WASHER	9	47252-040
19	3/75-16 HEX NUT	5	47253-603
20	3/12-18 X 1.00 LG. S.S. HEX HEAD SCREW	2	47779-081
21	3/12-18 X 1.00 LG. S.S. HEX HEAD SCREW	14	47252-039
22	3/12-18 LOCK WASHER	6	47253-602
23	SPRING HUB	1	66637-002
24	250 LOCK WASHER	3	47252-038
25	250-20 X .50 LG. SLOTTED HEX HEAD SCREW	1	47245-061
26	BLOWOUT COIL ASSEMBLY	1	59593-701
27	BLOWOUT GUARD	1	59584-800
28	BLOWOUT CORE	1	59589-800
29	BLOWOUT CORE INSULATOR	1	59589-802
30	FLUX PLATE ASSEMBLY - LEFT HAND	1	59587-000
31	FLUX PLATE ASSEMBLY - RIGHT HAND	1	59586-001
32	SUPPORT PLATFORM	1	59585-002
33	SUPPORT PLATFORM	1	59583-000
34	SUPPORT PLATFORM	3	66870-041
35	3/75-16 X .75 LG. HEX HEAD SCREW	2	47246-102
36	250-20 DIA. FLAT WASHER	2	47253-021
37	250-20 X .62 LG. FLAT HEAD SCREW	2	47250-502
38	250-20 X .50 LG. BRASS FLAT HEAD SCREW	2	47245-108
39	250-20 X .50 LG. BRASS FLAT HEAD SCREW	1	59610-000
40	COIL CORE	2	67628-000
41	COIL CORE CAP SPACER	2	41791-000
42	COIL CORE CAP	2	41763-000
43	3/12-18 X .75 LG. HEX HEAD SCREW	2	47246-079
44	OPERATING COIL (SEE CHART)	1	58441-069
45	NAMEPLATE (NOT SHOWN)	2	59597-000
46	ARMATURE STOP SUPPORT RAIL	2	57438-050
47	ARMATURE STOP SUPPORT RAIL	2	48497-001
48	INSULATOR 1 X 1 (250-20)	1	59589-000
49	INSULATOR 1 X 1 (250-20)	2	59614-000
50	ANTI BOUNCE STOP	1	59614-000
51	ANTI BOUNCE SLEEVE	1	59613-000
52	ANTI BOUNCE WEIGHT	2	47246-078
53	3/12-18 X .62 LG. HEX HEAD SCREW	2	66473-025
54	3/12-18 X .50 S.S. LG. HEX HEAD SCREW	2	47779-061
55	250-20 X .50 S.S. LG. HEX HEAD SCREW	2	47779-061

56	250 S.S. LOCK WASHER	2	47252-238
57	3/12-18 S.S. HEX NUT	2	47796-103
58	BRACKET	2	59590-000
59	LINK	2	59578-000
60	SPACER-TOP	2	59577-000
61	SPACER-BOTTOM	2	57438-047
62	3/12-18 X 3.75 LG. BRASS STUD	1	57438-049
63	3/12-18 X 5.25 LG. BRASS STUD	8	47251-012
64	3/12 BRASS FLAT WASHER	6	47254-013
65	3/12-18 X 3.75 LG. HEX NUT	1	47246-535
66	3/12-18 X 3.75 LG. HEX HEAD SCREW	1	47301-013
67	3/12-18 X 2.75 LG. HEX HEAD SCREW	4	47246-538
68	500-13 X 2.75 LG. HEX HEAD SCREW	4	47250-316
69	500 LOCK WASHER	4	47252-042
70	500-13 FULL HEX NUT	4	47253-505
71	MOLDED BASE ASSEMBLY	1	59576-601
72	MECHANICAL INTERLOCK ASSEMBLY	1	59625-008
73	MECHANICAL INTERLOCK ASSEMBLY (SPL)	1	59625-009
74	PLUNGER AUXILIARY (SINGLE L.H.) GROUP	1	59620-066
75	PLUNGER AUXILIARY (DOUBLE L.H.) GROUP	1	59620-106
76	PLUNGER AUXILIARY (SINGLE R.H.) GROUP	1	59620-168
77	PLUNGER AUXILIARY (DOUBLE R.H.) GROUP	1	59620-168
78	COMPLETE ARC SHIELD & ARC TRANSFER ASSEMBLY	4	59622-806
79	3/12-18 X 1.75 LG. HEX HEAD SCREW	2	47246-082
80	3/75-16 X 1.75 LG. HEX HEAD SCREW	2	47246-106
81	3/75-16 X 4.00 LG. HEX HEAD SCREW	2	47246-117
82	3/75-16 X 4.50 LG. HEX HEAD SCREW	2	47246-514
83	500-13 X 1.50 LG. S.S. HEX HEAD SCREW	2	47779-110
84	750 EXTERNAL TOOTH RETAINING RING	9	57429-026
85	875 EXTERNAL TOOTH RETAINING RING	2	57429-027
86	BASE	1	59576-003
87	SPACER (QTY. 4) OR AS REQUIRED	1	66970-040
88	ARC TRANSFER	1	59622-200
89	HAIR PIN CUTTER	2	57403-005
90	HAIR PIN	2	57403-006
91	3/12 S.S. LOCK WASHER	4	47252-027
92	THE BAR GROUP SIZE 7 ONLY (NOT SHOWN)	4	59400-027
93	NYCOLIP (NOT SHOWN)	4	57464-000
94	CRIMP TERMINAL	4	57513-060
95	#8 X .50 LG. PAN HEAD TYPE AB SCREW (NOT SHOWN)	5,38	8211130008
96	LEAD WIRE #8 X L=53, R=31,50 LG.	2	57513-068
97	3/75 FLAT WASHER	2	57513-068
98	CRIMP TERMINAL	2	8211410614
99	CONTROL WIRE #14 X 9.25 LG.	2	47779-077
100	3/12-18 X .50 LG. S.S. HEX HEAD SCREW	2	67988-006
101	ARC SHIELD SPACER	2	57300-048
102	CLAMP TERMINAL (QTY. 4) OR AS REQUIRED	2	57300-048
103			
104			
105			



NOTES: * Δ ○ ● ⊕ ⊙

* ITEM 73 MECHANICAL INTERLOCK ASSEMBLY PART NO. 59627 (ORDERED SEPARATELY).

Δ (ORDERED SEPARATELY).

○ (ORDERED SEPARATELY).

⊕ ITEM 92 THE BAR GROUP SIZE 7 ONLY (11.5\"/>

⊙ ITEM 87 SPACER USED ONLY WHEN POWER CRIMP TERMINALS ARE USED. (ORDERED SEPARATELY).

COMPLETE ASSEMBLY PART NO.	DC CONTROL VOLTAGE (COILS IN SERIES)	ITEM 45 DC OPERATING VOLTS	COIL PART NO.	OHMS ± 10% EACH COIL AT 20° C
59596-701	STANDARD COPPER CONTACTS	115 / 125V	001	300 OHMS
59596-702		115 / 125V	004	75 OHMS
59596-703		80V	005	30 OHMS
59596-704		40V	006	5.2 OHMS
59596-705		36V	007	300 OHMS
59596-706		230 / 250V	004	75 OHMS
59596-707		115 / 125V	004	75 OHMS
59596-708		80V	005	30 OHMS
59596-709		40V	006	5.2 OHMS
59596-710		36V	006	5.2 OHMS

9-22-00 TLJ ITEM 66 WAS 1.50 LG. ADDED ITEM 97

2-21-00 TLJ UPDATED DRAWING

59700301 06/13/96

REPAIR PARTS BULLETIN 5210
MOLDED BASE FRONT REMOVABLE
900 AMP, 1 POLE, N.O.,
DC CONTACTOR, SIZE 7

W5M 2 2

59700-3