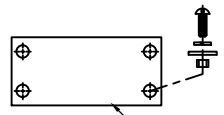


† CONTACT KIT 59672-007 INCLUDES COPPER CONTACT TIPS (ITEM 23), ARC HORN (ITEM 24), CONTACT SPRING (ITEM 20), AND HARDWARE (ITEMS 39 & 58).

†† CONTACT KIT 59672-008 INCLUDES SILVER CONTACT TIPS (ITEM 23), ARC HORN (ITEM 24), CONTACT SPRING (ITEM 20), AND HARDWARE (ITEMS 39 & 58).

††† CONTACT KIT 59672-018 INCLUDES SILVER TUNGSTEN CONTACT TIPS (ITEM 23), ARC HORN (ITEM 24), CONTACT SPRING (ITEM 20), AND HARDWARE (ITEMS 39 & 58).

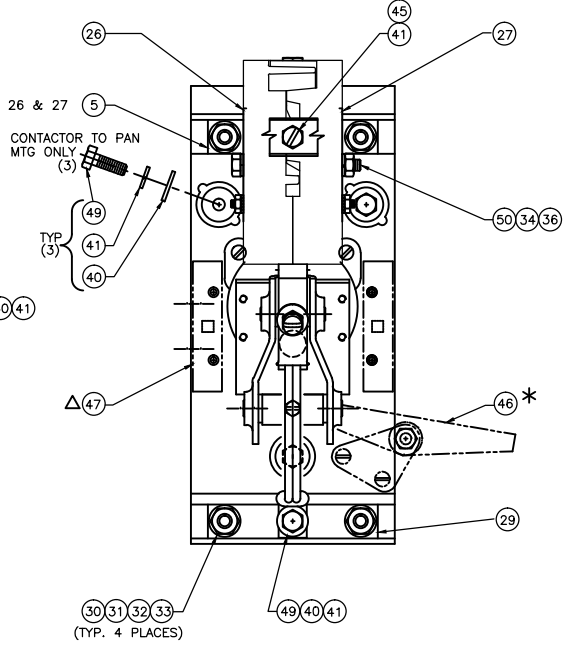
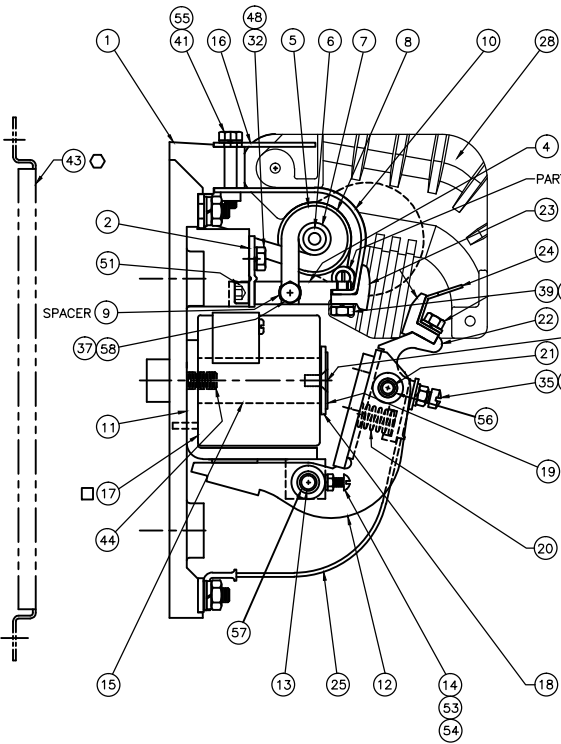
THIS DRAWING FILE AND THE DATA SHOWN IS PROPRIETARY AND CONFIDENTIAL AND THE SOLE PROPERTY OF HUBBELL INDUSTRIAL CONTROLS. DO NOT USE OR REPRODUCE WITHOUT WRITTEN APPROVAL OF HUBBELL.



☆ ARMATURE TIE BAR INCLUDING MTG. HARDWARE USED WITH 5" POLE CENTERS FOR 2 POLE TIED CONTACTORS ITEM # 52 MUST BE ORDERED SEPARATELY.

NOTE: WHEN ORDERING PARTS, FURNISH THE FOLLOWING INFORMATION
 1. BULLETIN NUMBER, NEMA SIZE, & SERIAL NUMBER FROM NAMEPLATE.
 2. PART NUMBER & DESCRIPTION

ITEM	DESCRIPTION	QTY	PART NO.
1	BASE	1	67995-002
2	CONTACT SUPPORT BRACKET	1	67999-000
3			
4	STATIONARY CONTACT BRACKET	1	58665-002
5	BLOWOUT COIL TERMINAL ASSEMBLY-STD.	1	67998-005
5	BLOWOUT COIL ASSEMBLY - 550 VOLT	1	67998-007
5	SHOCK RESISTANT WELDED BLOWOUT ASSEMBLY	1	67998-011
6	BLOWOUT COIL CORE	1	66870-034
7	B.O. CORE INSULATOR	1	17351-000
8	B.O. COIL INSULATOR WASHER	2	16961-000
9	B.O. COIL SPACER	1	16971-001
10	B.O. GUARD	1	68054-002
11	STATOR ASSEMBLY	1	17356-000
12	ARMATURE ASSEMBLY	1	17354-000
13	ARMATURE BEARING PIN	1	58843-000
14	HINGE PIN SCREW 10-24 X 5/8 LG RND HD	1	47241-127
15	STATOR CORE	1	58664-001
16	ARC SHIELD RETAINER	1	59653-100
17	OPERATING COIL-230/250 VOLTS	1	17359-000
17	OPERATING COIL 115/125 VOLTS	1	17487-000
17	OPERATING COIL 57.5 VOLTS	1	17488-000
18	CORE CAP	1	16940-000
19	NON MAGNETIC SPACER	1	19683-001
20	CONTACT SPRING	1	16980-000
21	CONTACT BEARING PIN	1	16988-000
22	MOVABLE CONTACT HOLDER	1	16927-000
23	CONTACT TIP - STANDARD	2	17279-000
†† 23	CONTACT TIP - SILVER	2	17279-001
††† 23	CONTACT TIP - SILVER TUNGSTEN	2	17279-003
24	ARC HORN	1	68056-001
25	SHUNT ASSEMBLY	1	68000-001
26	FLUX PLATE ASSEMBLY L.H.	1	16965-000
27	FLUX PLATE ASSEMBLY R.H.	1	16964-000
28	ARC SHIELD ASSEMBLY	1	59694-501
29	TERMINAL - BOTTOM	1	67997-002
30	5/16-18 HEX NUT STEEL	4	47253-602
31	5/16 FLAT WASHER STEEL	4	47250-505
32	5/16 SPLIT LOCKWASHER	5	47252-039
33	5/16-18 X 3/4 HEX HD CAP SCREW STEEL	4	47246-079
34	1/4-20 HEX NUT - JAM	1	47253-601
35	1/4-20 HEX NUT - STEEL	1	47253-021
36	1/4-20 X 2-3/4 HEX HD CAP SCREW	1	47246-094
37	1/4 20 X 1 HEX HD CAP SCR STAINLESS	1	47779-068
38	1/4-20 X 7/8 SL FILLISTER HD SCREW	1	47244-149
39	1/4-20 X 5/8 HEX HD CAP SCR. STAINLESS	2	47779-063
40	1/4 FLAT WASHER STEEL	5	47250-502
41	1/4 SPLIT LOCK WASHER	7	47252-038
42	1/4-20 X 1/2 S.S. FLAT HD CAP SCREW	1	49144-108
43	MOUNTING PAN - STEEL	1	68005-001
44	3/8-16 X 1-5/8 LG. STUD - STEEL	1	66475-014
45	1/4-20 X 1/2 HEX HD CAP SCREW SLOTTED	1	47245-061
46	MECHANICAL INTERLOCK ASSEMBLY (KIT)		PER ORDER
47	AUX. ASSEM. (N.O. & N.C. CONTACTS) (KIT)		AS REQUIRED
48	5/16-18 X 5/8 HEX HD CAP SCR	1	47246-078
49	1/4-20 X 3/4 HEX HD CAP SCR	4	47246-064
50	1/4" LOCKWASHER - EXTERNAL TOOTH	2	47303-008
51	5/16-18 X 1/2 SOCKET HD. CAP SCREW	1	47100-504
☆ 52	TIE BAR KIT (FOR 2 POLE TIED CONTACTORS ONLY)		59400-001
53	#10 LOCKWASHER - HEAVY SPLIT	1	47252-065
54	#10-24 HEX NUT	1	47253-018
55	1/4-20 X 1-1/2 HEX HD CAP SCREW	1	47246-069
56	HINGE PIN BUSHING	2	16954-000
57	ARMATURE PIN BUSHING	2	16953-000
58	1/4 SPLIT LOCK WASHER, STAINLESS STEEL	3	47252-238



△ AUXILIARY CONTROL CONTACT ASSEMBLY (INCLUDING KNOCKER) P/N 68011-001 SINGLE BLOCK UNIT P/N 68011-002 DOUBLE BLOCK UNIT. TO BE ORDERED SEPARATELY. AUXILIARY CONTROL CONTACT ASSEMBLY IS NOT INCLUDED IN COMPLETE CONTACTOR ASSEMBLY.

□ SELECT ONE ITEM ONLY (QUANTITIES AS SHOWN)

* INTERLOCK BAR ASSEMBLY P/N 68041-003 TO BE ORDERED SEPARATELY. REFER TO REPAIR PARTS PRINT A-58671 INTERLOCK BAR ASSEMBLY IS NOT INCLUDED WITH COMPLETE CONTACTOR ASSEMBLY.

⊙ WELDED BLOWOUT ASSEMBLY INCLUDES ITEMS 4, 5, 9, 37, & 41.

605	613	57.5	SHOCK RESISTANT WELDED BLOWOUT ASSEMBLY ⊙
603	611	115/125	SHOCK RESISTANT WELDED BLOWOUT ASSEMBLY ⊙
601	609	230/250	
405	413	57.5	
403	411	115/125	SILVER FACED CONTACTS □
401	409	230/250	
303	306	57.5	
302	305	115/125	POWER LINE VOLTAGE 550 V. DC ONLY ⊖
301	304	230/250	
503	506	57.5	
502	505	115/125	STANDARD
501	504	230/250	
005	013	57.5	
003	011	115/125	
001	009	230/250	

SUFFIX	SUFFIX	DC OPERATING COIL
COMPLETE ASSEMBLY PART NO. 59364- WITH STEEL MOUNTING PAN ⊙	COMPLETE ASSEMBLY PART NO. 59364- WITHOUT STEEL MOUNTING PAN	ITEM 17

J		E	
I		D	
H		C	
G		B	030113 KEG ECN A13-019 CHANGE SCREW
F		A	072012 KEG ECN A12-053
Rev	DATE	BY	DESCRIPTION

LINEAR	HOLE	ANGLES	BULL. 5210 REPAIR PARTS FOR 100 AMP (SIZE 3) MOLDED BASE DC CONTACTOR WELDED ARMATURE
0.X ±.050	PUNCH ±.002	DIMEN. ± 1'	
0.XX ±.020	±.001	UNDIM. 90° ±2'	
0.XXX ±.005	REAM SPECIFIED		
CADD NO. 59364100	R.M.S.	DATE 07/20/12 DR.	CK. REF.
Hubbell Industrial Controls, Inc. 50 Edwards Street Madison, Oh. 44057		DRG. NO. 1 OF 1	RPC-59364-1