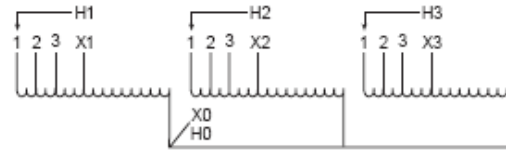
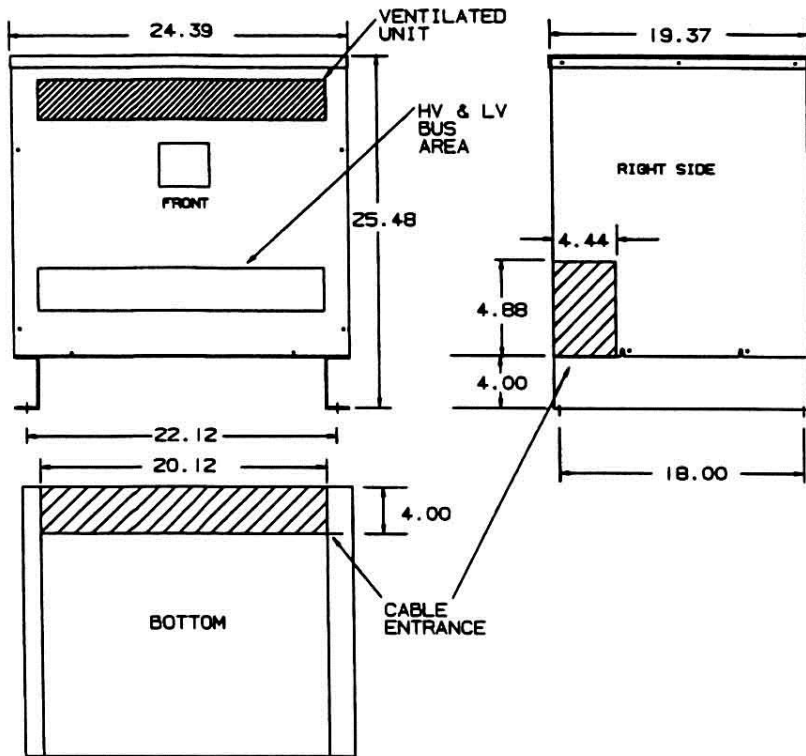


Revisions



Primary Volts	Alt Rating	Connect Primary Lines To	Inter-Connect	Connect Secondary Lines To
600	480	H1, H2, H3	1	
570	456	H1, H2, H3	2	
540	432	H1, H2, H3	3	
Secondary Volts				
480	380			X1, X2, X3
277 1 phase	220 1 phase			X1 to X0 X2 to X0 X3 to X0

NOTE: PRIMARY AND SECONDARY BUS AREA IN FRONT OF CASE.

KEY: DENOTES CONDUIT AREAS



Type No.

KVA	CATALOG NUMBER	VOLTAGE		WEATHER SHIELD	WEIGHT	PHASE	FREQ.
		HIGH	LOW				
112.5/90	T-2A-52712-1	600 / 480	480 / 380	WS-A-1	325 Lbs	3 ϕ	60 Hz

TYPICAL PERFORMANCE DATA

Winding Rise	150°C	(Auto)		Impedance		Typical Efficiency-35%	99.25%
Insulation	220°C			Windings	AL	No Load Losses	
Sound Level	50 dB	Standard	UL/CSA			Total load Losses	

Auto-Transformer

					A	PRINTS TO	CONTROL 7	A
--	--	--	--	--	----------	-----------	------------------	----------