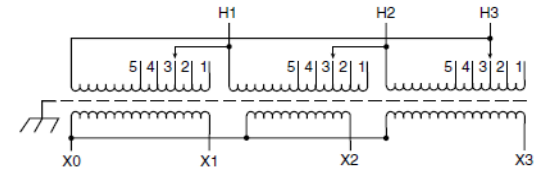


REVISIONS

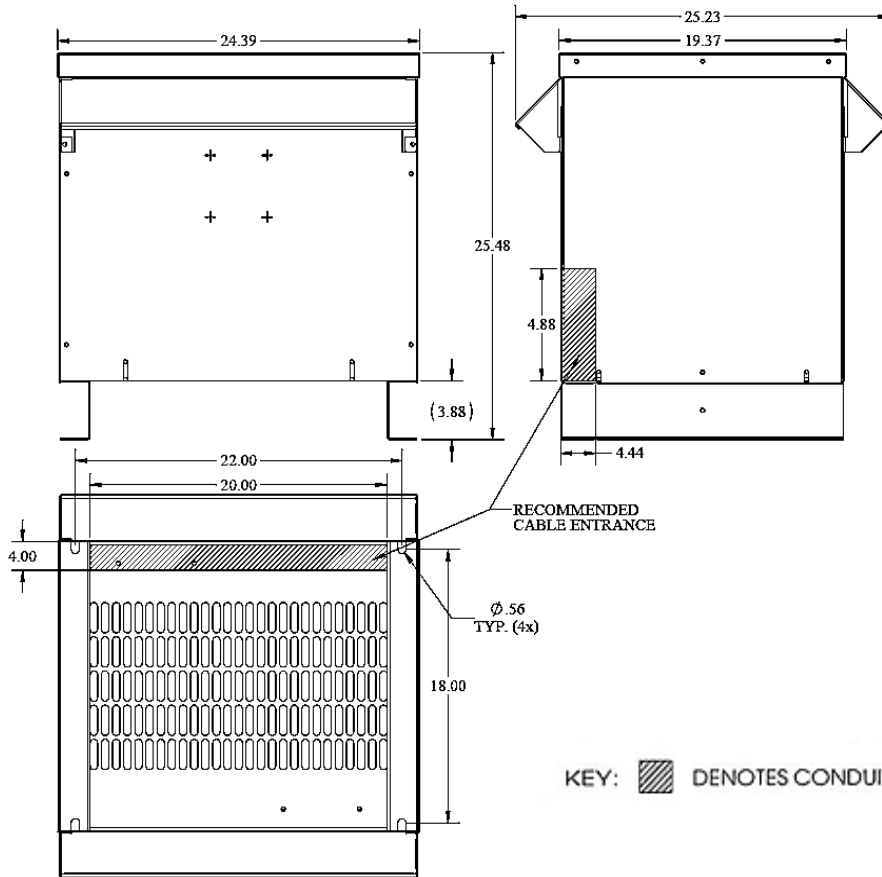
NOTES:

1. Dry Type
2. Class AA
3. Ventilated
4. Paint - #61 ANSI



Primary Volts	%	Connect Leads to Tap No.
218	105	1
213	102.5	2
208	100	3
203	97.5	4
198	95	5
Secondary Volts		
208		X1, X2, X3
120 1 phase		X1 & X0 X2 & X0 X3 & X0

NOTE: PRIMARY AND SECONDARY BUS AREA IN FRONT OF CASE.



KEY: DENOTES CONDUIT AREAS

KVA	CATALOG NUMBER	VOLTAGE		LUG KIT	WEIGHT	PHASE	FREQUENCY
		HIGH	LOW				
15	T3015K0064BS	208Δ	208Y/120		300 Lbs	3φ	60Hz
Temp Rise:	150°C	TYPICAL PERFORMANCE DATA				Typical Efficiency @ 35%	97.93%
Insulation:	220°C	Regulation @ 100% PF	2.10%	Windings:	AL	Typical No Load Losses:	75.39
NEMA ST20 Standard:	45 dB	Standards:	UL/CSA	Impedance:	2.97%	100% Load (Typ) Load Losses (I²R)	394.02
Electrostatic Shield:	YES	Approvals:	DOE-2016	Enclosure:	3R	Total Load Losses: (W)	469.42

Meets US DOE 2016 Efficiency

DATE: 16-Dec-15

TYPE NO:

CASE 1