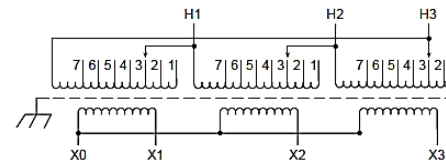


**REVISIONS**

**NOTES:**

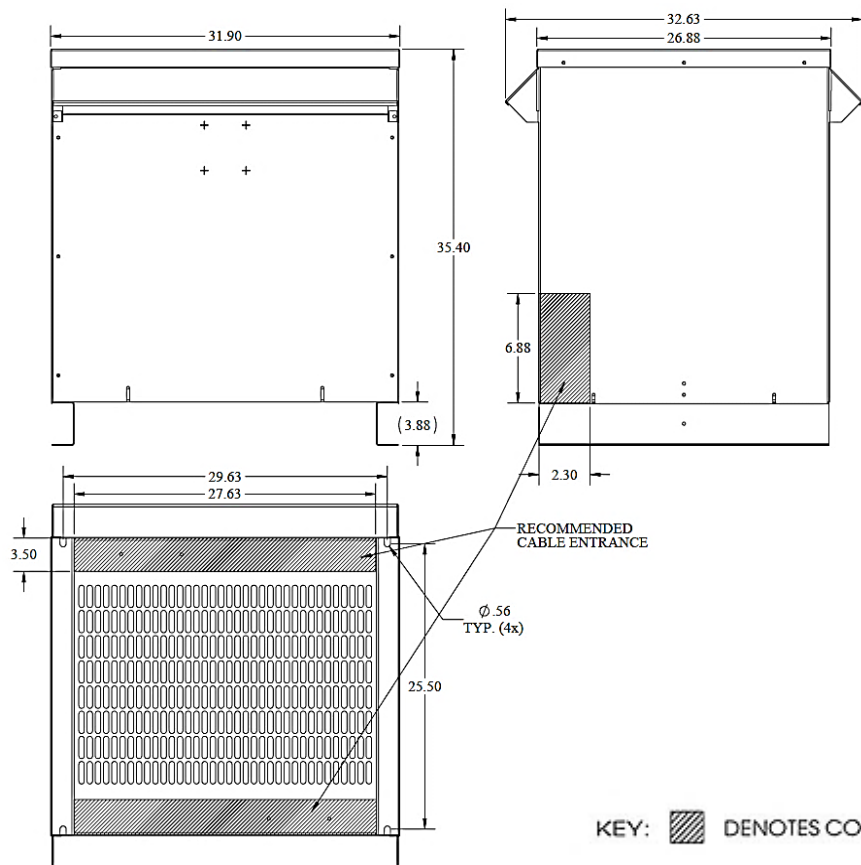
1. Dry Type
2. Class AA
3. Ventilated
4. Paint - #61 ANSI



Primary Volts	Connect Primary Lines To	Inter-Connect	Connect Secondary Lines To
504	H1, H2, H3	1	
492	H1, H2, H3	2	
480	H1, H2, H3	3	
468	H1, H2, H3	4	
456	H1, H2, H3	5	
444	H1, H2, H3	6	
432	H1, H2, H3	7	

Secondary Volts			
208			X1, X2, X3
120			X1 to X0 X2 to X0 X3 to X0
1 phase			

NOTE: PRIMARY AND SECONDARY BUS AREA IN FRONT OF CASE.



KEY: [Hatched Box] DENOTES CONDUIT AREAS

KVA	CATALOG NUMBER	VOLTAGE		LUG KIT	WEIGHT	PHASE	FREQUENCY
		HIGH	LOW				
112.5	T3112K0013BSF	480Δ	208Y/120		938 Lbs	3φ	60Hz
Temp Rise:	115°C	<b>TYPICAL PERFORMANCE DATA</b>				Typical Efficiency @ 35%	98.82%
Insulation:	220°C	Regulation @ 100% PF	1.80%	Windings:	AL	Typical No Load Losses:	258.75
NEMA ST20 Standard:	50 dB	Standards:	UL/CSA	Impedance:	4.27%	100% Load (Typ) Load Losses (I²R)	2274.11
Electrostatic Shield:	YES	Approvals:	DOE-2016	Enclosure:	3R	Total Load Losses:	2532.86

**Meets US DOE 2016 Efficiency**

DATE: 11-Jan-16

TYPE NO:

**CASE 3**