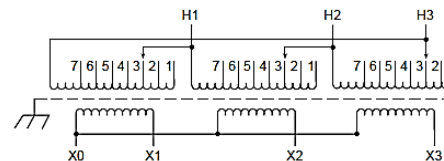
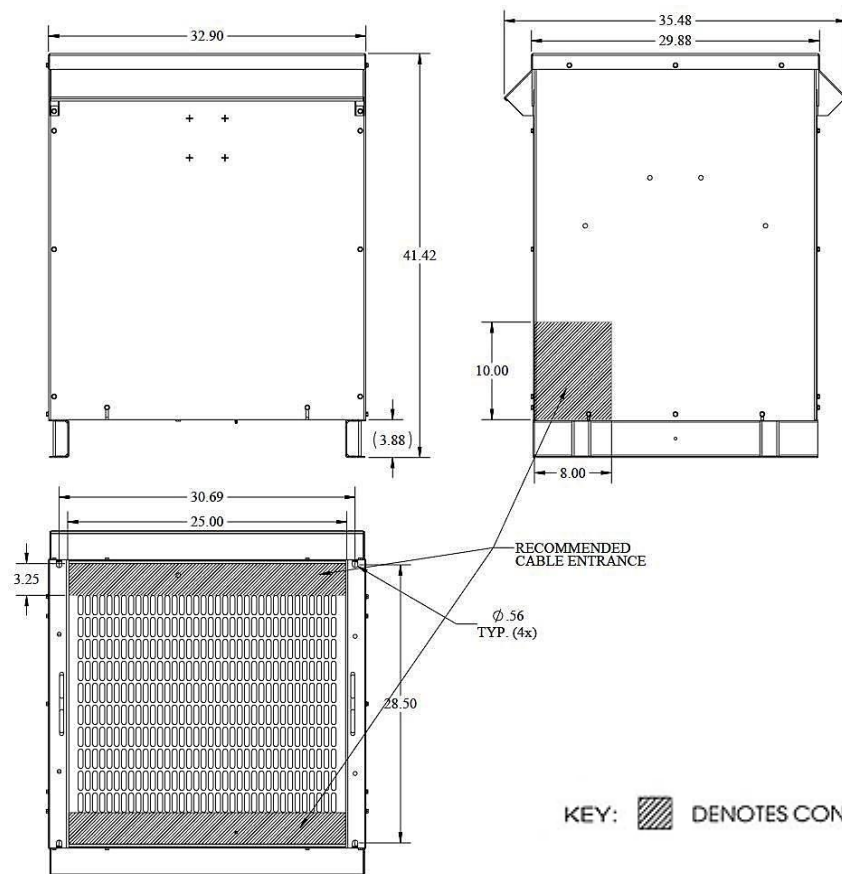


REVISIONS

NOTES:

1. Dry Type
2. Class AA
3. Ventilated
4. Paint - #61 ANSI



Primary Volts	Connect Primary Lines To	Inter-Connect	Connect Secondary Lines To
504	H1, H2, H3	1	
492	H1, H2, H3	2	
480	H1, H2, H3	3	
468	H1, H2, H3	4	
456	H1, H2, H3	5	
444	H1, H2, H3	6	
432	H1, H2, H3	7	

Secondary Volts			
208			X1, X2, X3
120			X1 to X0 X2 to X0 X3 to X0
1 phase			

KEY: DENOTES CONDUIT AREAS

NOTE: PRIMARY AND SECONDARY BUS AREA IN FRONT OF CASE.

KVA	CATALOG NUMBER	VOLTAGE		LUG KIT	WEIGHT	PHASE	FREQUENCY
		HIGH	LOW				
150	T3150K0013BSF	480 Δ	208Y/120		1213 Lbs	3 ϕ	60Hz
Temp Rise:	115°C	TYPICAL PERFORMANCE DATA				Typical Efficiency @ 35%	98.84%
Insulation:	220°C	Regulation @ 100% PF	1.80%	Windings:	AL	Typical No Load Losses:	325.43
NEMA ST20 Standard:	50dB	Standards:	UL/CSA	Impedance:	4.05%	100% Load (Typ) Load Losses (I ² R)	3159.74
Electrostatic Shield:	YES	Approvals:	DOE-2016	Enclosure:	3R	Total Load Losses:	3485.17

Meets US DOE 2016 Efficiency

DATE: 11-Jan-16

TYPE NO:

CASE 4