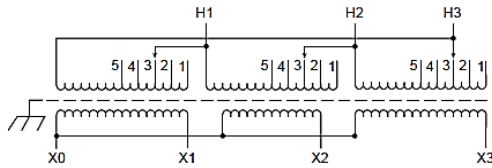
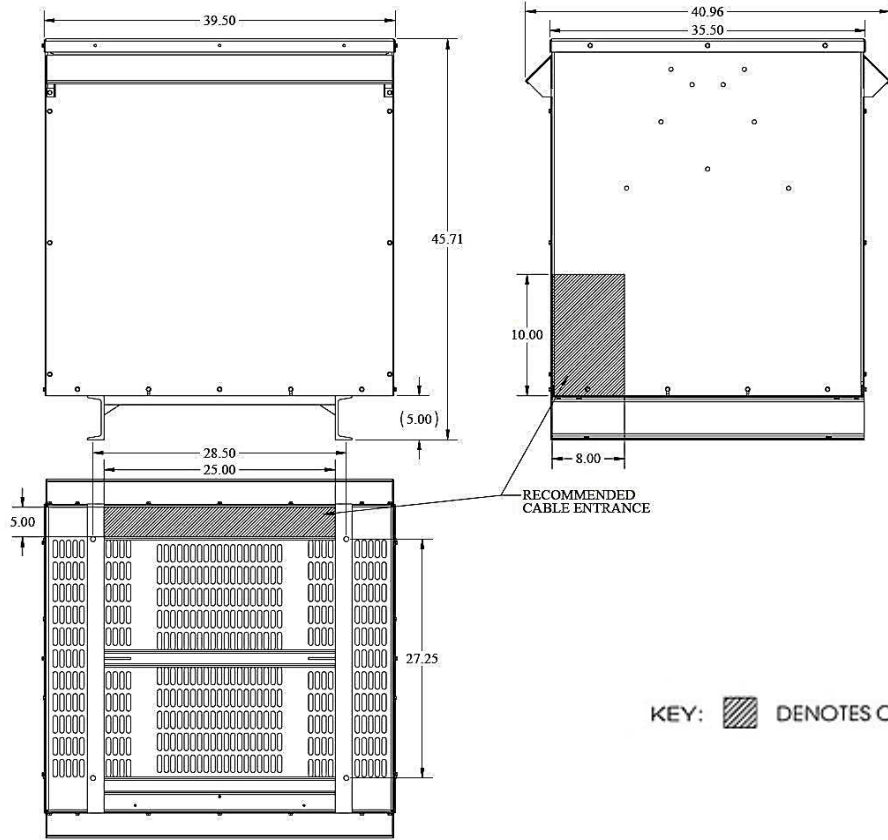


REVISIONS

NOTES:

- 1. Dry Type
- 2. Class AA
- 3. Ventilated
- 4. Paint - #61 ANSI



| Primary Volts | % | Connect Leads to Tap No. |
|-----------------|-------|--------------------------|
| 218 | 105 | 1 |
| 213 | 102.5 | 2 |
| 208 | 100 | 3 |
| 203 | 97.5 | 4 |
| 198 | 95 | 5 |
| Secondary Volts | | |
| 208 | | X1, X2, X3 |
| 120 | | X1 & X0 |
| 1 phase | | X2 & X0 |
| | | X3 & X0 |

KEY: DENOTES CONDUIT AREAS

NOTE: PRIMARY AND SECONDARY BUS AREA IN FRONT OF CASE.

| KVA | CATALOG NUMBER | VOLTAGE | | K-FACTOR | WEIGHT | PHASE | FREQUENCY |
|-----------------------|-----------------|---------------------------------|----------|------------|----------|--|-----------|
| | | HIGH | LOW | | | | |
| 225 | T3225K0064BK13S | 208Δ | 208Y/120 | 13 | 2165 Lbs | 3φ | 60Hz |
| Temp Rise: | 150°C | TYPICAL PERFORMANCE DATA | | | | Typical Efficiency @ 35% | 98.95% |
| Insulation: | 220°C | Regulation @ 100% PF | 1.20% | Windings: | AL | Typical No Load Losses: | 561.32W |
| NEMA ST20 Standard: | 55dB | Standards: | UL/CSA | Impedance: | 3.38% | 100% Load (Typ) Load Losses (I ² R) | 5251.94W |
| Electrostatic Shield: | YES | Approvals: | DOE-2016 | Enclosure: | 3R | Total Load Losses: | 5813.26W |

DATE: 28-Jan-16

TYPE NO:

CASE 5

Meets US DOE 2016 Efficiency