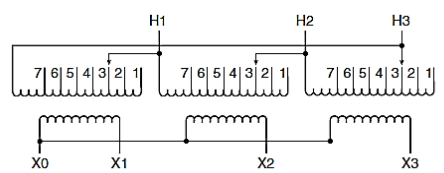
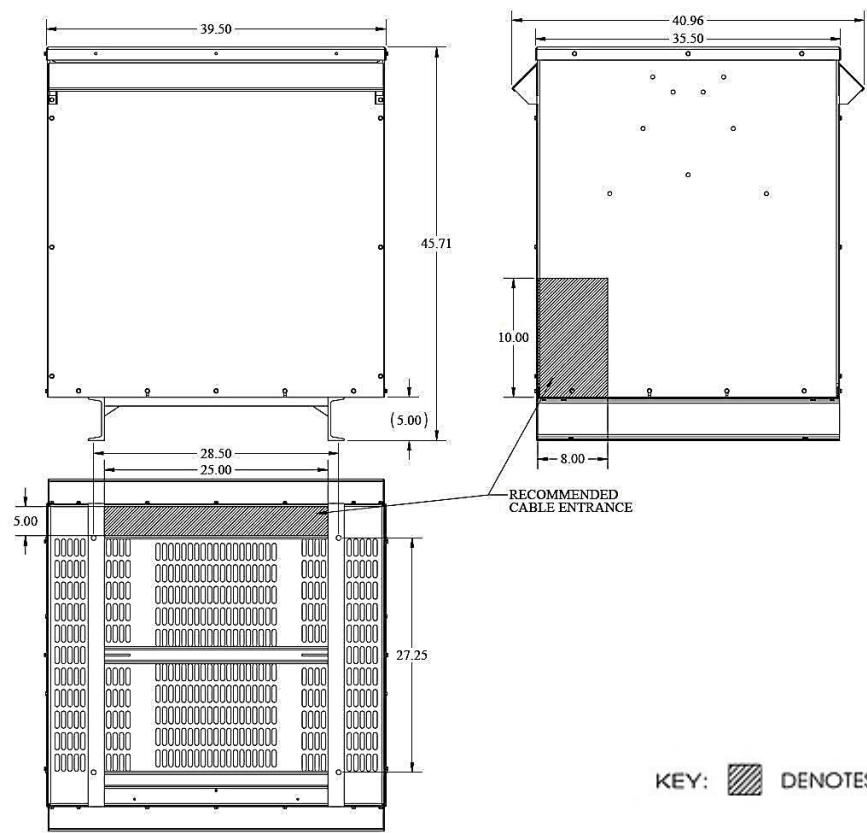


REVISIONS

NOTES:

- 1. Dry Type
- 2. Class AA
- 3. Ventilated
- 4. Paint - #61 ANSI



Primary Volts	Connect Primary Lines To	Inter-Connect	Connect Secondary Lines To
504	H1, H2, H3	1	
492	H1, H2, H3	2	
480	H1, H2, H3	3	
468	H1, H2, H3	4	
456	H1, H2, H3	5	
444	H1, H2, H3	6	
432	H1, H2, H3	7	
Secondary Volts			
208			X1, X2, X3
120 1 phase			X1 to X0 X2 to X0 X3 to X0

KEY: DENOTES CONDUIT AREAS

NOTE: PRIMARY AND SECONDARY BUS AREA IN FRONT OF CASE.

KVA	CATALOG NUMBER	VOLTAGE		LUG KIT	WEIGHT	PHASE	FREQUENCY
		HIGH	LOW				
300	T3300K0013BCS	480Δ	208Y/120		2233 Lbs	3φ	60Hz
Temp Rise:	150°C	TYPICAL PERFORMANCE DATA				Typical Efficiency @ 35%	99.00%
Insulation:	220°C	Regulation @ 100% PF	1.70%	Windings:	CU	Typical No Load Losses:	514.5W
NEMA ST20 Standard:	55 Db	Standards:	UL/CSA	Impedance:	3.80%	100% Load (Typ) Load Losses (I ² R)	5690.1W
Electrostatic Shield:	Option	Approvals:	DOE-2016	Enclosure:	3R	Total Load Losses:	6204.6W

DATE: 17-Dec-15

TYPE NO:

CASE 5

Meets US DOE 2016 Efficiency