

## M-2900A and M-2980A Control Cabinet Installation of Battery Cell Pack

– CYCLON® Battery BC Single Cell Model Number 0850-0108

Voltage: 12.0 Vdc

Capacity: 8.0 Ah



This product contains a non-spillable, sealed pure lead battery cell pack, which has been accepted by the Department of Transportation in compliance with tests found in 49 CFR §173.159(d). The rugged construction of the battery pack is rated for -65° C to +80° C (-85° F to +176° F) service environment. The battery pack is supplied in a charged condition capable of extremely high energy short circuit currents.

### Required Storage Parameters to Maintain Charge Capacity










During storage, batteries lose charge capacity by self-discharge. The recommended recharge interval is every 6 months from date of receipt. To maintain charge capacity, check the charge every 6 months.

**Temperature:** 25° C

**Humidity:** Maximum relative humidity 80% for temperatures up to 31° C, decreasing to 31° C linearly to 50% relative humidity at 40° C.

**Environment:** Storage area to be free of dust, corrosive gases, flammable materials, dew, percolating water, rain and solar radiation.

### Caution

	No smoking, no naked flames, no sparks		Clean all acid splash in eyes or on skin with plenty of clean water. Then seek medical help. Acid on clothing is to be washed with water.
	Electrical hazard		Read instructions
	Electrolyte is corrosive		Recycle scrap batteries. Contains lead
	Shield eyes		Warning: Risk of fire, explosion, or burns. Do not disassemble, heat above 60°C, or incinerate. Avoid any short circuit. Metallic parts under voltage on the battery, do not place tools or items on top of the battery.
	Danger		

**California Proposition 65 Warning – Battery posts, terminals and related accessories contain lead and lead compounds, chemicals known to the State of California to cause cancer and reproductive harm. Wash hands after handling.**

## Installation of Battery Cell Pack (Cont'd)

The optional Battery Cell Pack is shipped loose with the M-2900A or M-2980A cabinet. The following instructions describe the installation of the Battery Cell Pack.

▲ **Caution:** Observe all Cautions stated in the M-2900A or M-2980A Spec when installing the Battery Cell Pack.

▲ **Caution:** Do not short the Positive and Negative Terminals when installing the Battery Cell Pack. The Battery Cell Pack is capable of extremely high energy short circuit currents.

1. Install the Battery Cell Pack as shown in Figure 1, with the Negative Terminal towards the bottom of the cabinet door and the Positive Terminal towards the top of the cabinet door.
2. Fasten the restraining straps by threading the small end of the strap through the second slot of the other end of the strap (Figure 2), then pull tight (about 15 lbs). Thread the small end back through the same slot, this will keep it out of the way and make it easier to remove in the future.
3. Connect the Negative marked White wire to the Battery Cell Negative Terminal and the Positive marked Red wire to the Battery Cell Positive Terminal.



Figure 1 Battery Cell Pack Orientation

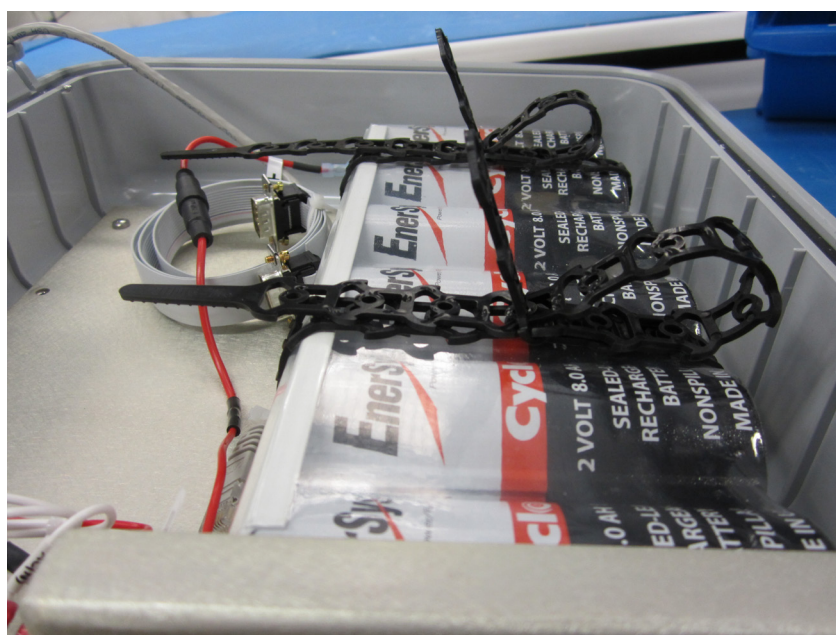


Figure 2 Battery Cell Pack Restraining Straps